



# U.S. PUBLIC LAND SURVEY MONUMENT RECORD

NOTE: This form is intended and designed to fulfill all requirements of Wisconsin Administrative Code, Chapter A-E 7.08 U.S. Public Land Survey Monument Record. An additional sheet may be added if necessary to conform with said requirements.

## CORNER LOCATION

Quarter Corner common to Sections 4 and 9  
Township 36 North, Range 10 East of the 4th P.M.  
Town of Pine Lake, Oneida County, Wisconsin

REGISTER OF DEEDS OFFICE  
ONEIDA COUNTY  
FILED

JAN 05 2016

AT \_\_\_\_\_ O'CLOCK \_\_\_\_\_ M  
KYLE J. FRANSON  
REGISTER OF DEEDS

6	5	4	3	2	1
7	8	9	10	11	12
18	17	16	15	14	13
19	20	21	22	23	24
30	29	28	27	26	25
31	32	33	34	35	36

T36N - R10E

## HISTORY OF ORIGINAL CORNER ESTABLISHMENT

ORIGINAL SURVEYOR: Wm. Daugherty  
DATE OF SURVEY: 1863  
ORIGINAL ACCESSORIES:  
10" W. Pine, S62°W, 31 lks  
8" Birch, N12°W, 10 lks

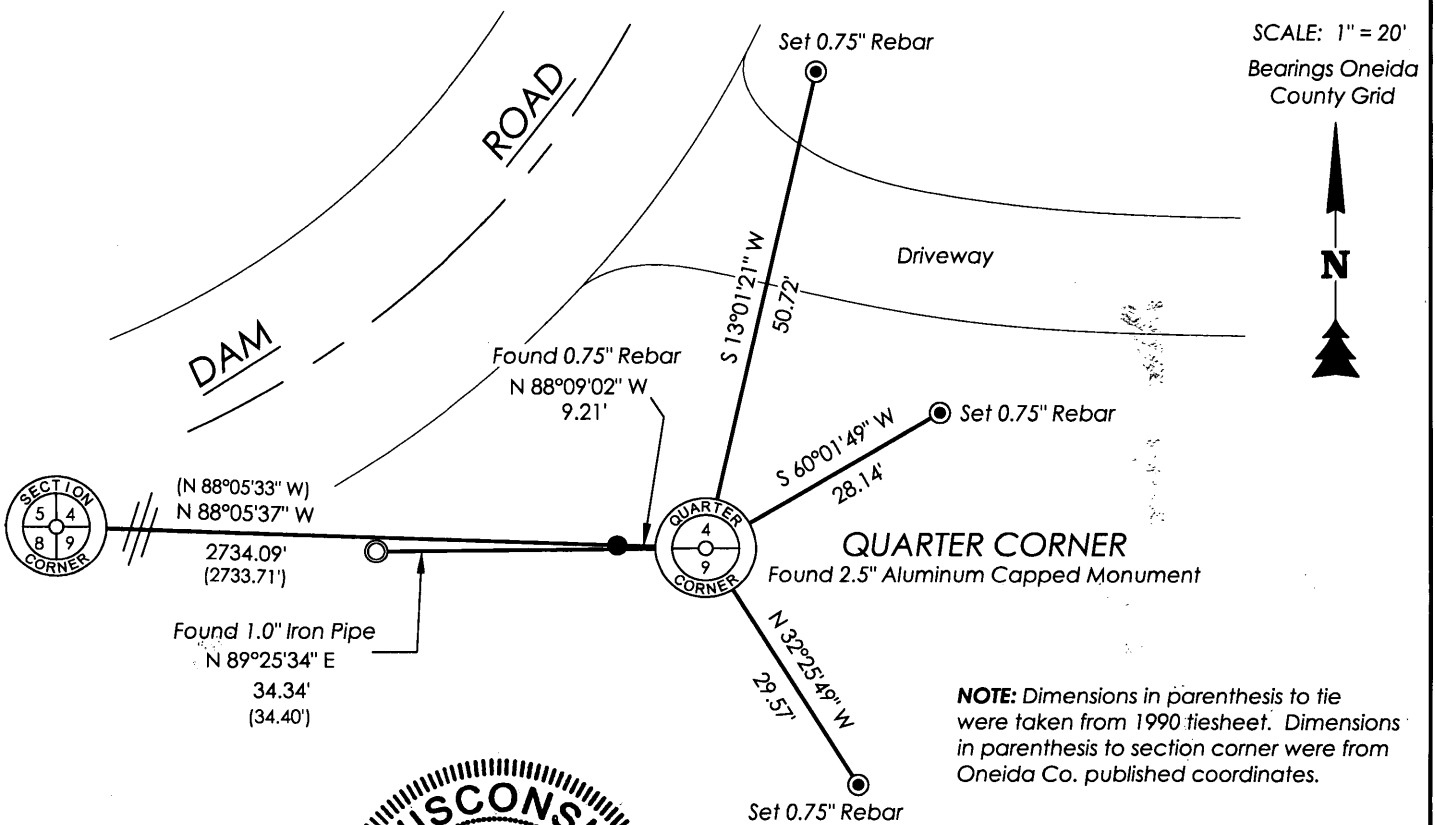
DESCRIPTION OF MONUMENT FOUND AT THIS CORNER AND IF IT WAS ACCEPTED, STATE ALL EVIDENCE (MATERIAL, TESTIMONIAL, OCCUPATIONAL, PLATS, RECORDS, OTHER MONUMENTS) USED AS A BASIS FOR ACCEPTING. IF NOT ACCEPTED OR IF NOTHING WAS FOUND, STATE EVIDENCE USED AS BASIS FOR ESTABLISHING LOCATION. IF RE-ESTABLISHED THROUGH LOST CORNER PROPORTIONATE METHODS, INDICATE ALL MONUMENTS, DISTANCES AND DIRECTIONS USED TO ESTABLISH. INDICATE TYPE OF MONUMENT AND SIGN POST FOUND OR SET.

1990 Todd Loftus visited corner location and found an iron pipe. Corner was set by Wisconsin Valley Improvement Co.

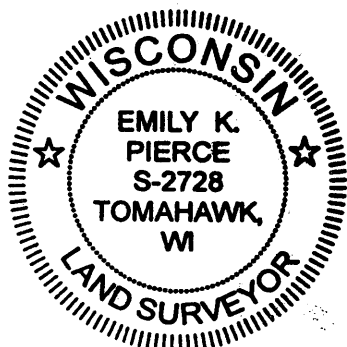
06/1990 William Kelley visited corner location and found a 1" iron pipe. Replaced pipe with 3" aluminum monument. Set post next to monument, marked bearing trees and set 1 iron pipe as a witness as shown on previous tiesheet.

12/22/2015 I visited corner location and found 3" aluminum monument as previous called for and the 1" iron pipe that was set as a witness. bearing trees from 1990 tiesheet are still living and blazes are overgrown. Found a rebar to the west from a previous survey and set three rebars as additional witnesses to the corner as measured as shown below. GPS Location in Oneida County Grid in NAD 83(2011) N: 162,716.18 E: 305,955.36.

PLAN VIEW OF CORNER WITH TIES TO AT LEAST 4 WITNESS MONUMENTS. IF IN DISAGREEMENT WITH PREVIOUSLY ESTABLISHED CORNER, SHOW THE DISTANCES BETWEEN THE TWO CORNERS AND ALSO INDICATE THE TIES TO THE DISPUTED.



NOTE: Dimensions in parenthesis to tie were taken from 1990 tiesheet. Dimensions in parenthesis to section corner were from Oneida Co. published coordinates.



I, Emily K. Pierce, Professional Land Surveyor No. S-2728, hereby certify that the corner location on this record was determined by me or under my direction and control and that this U.S. Public Land Survey Monument Record is correct and complete to the best of my knowledge and belief.

*Emily K. Pierce*

Emily K. Pierce, PLS No. S-2728  
STEIGERWALDT LAND SURVEYING, LLC

361004 0020