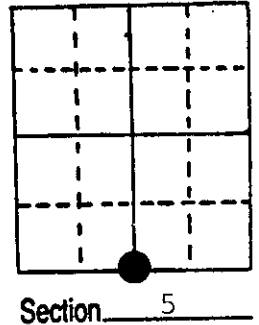
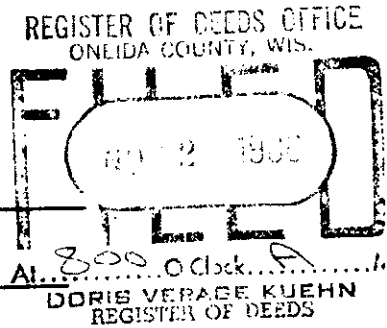


Stock No. 26273

U.S. PUBLIC LAND SURVEY MONUMENT RECORD

Note: This form is intended and designed to fulfill all requirements of Wisconsin Administrative Code, Chapter A-E 5.02, U.S. Public Land Survey Monument Record (3) (a) (b) (c) (d) (e) (f) (g) (h) (i). An additional sheet may be added if necessary to conform with said requirements.

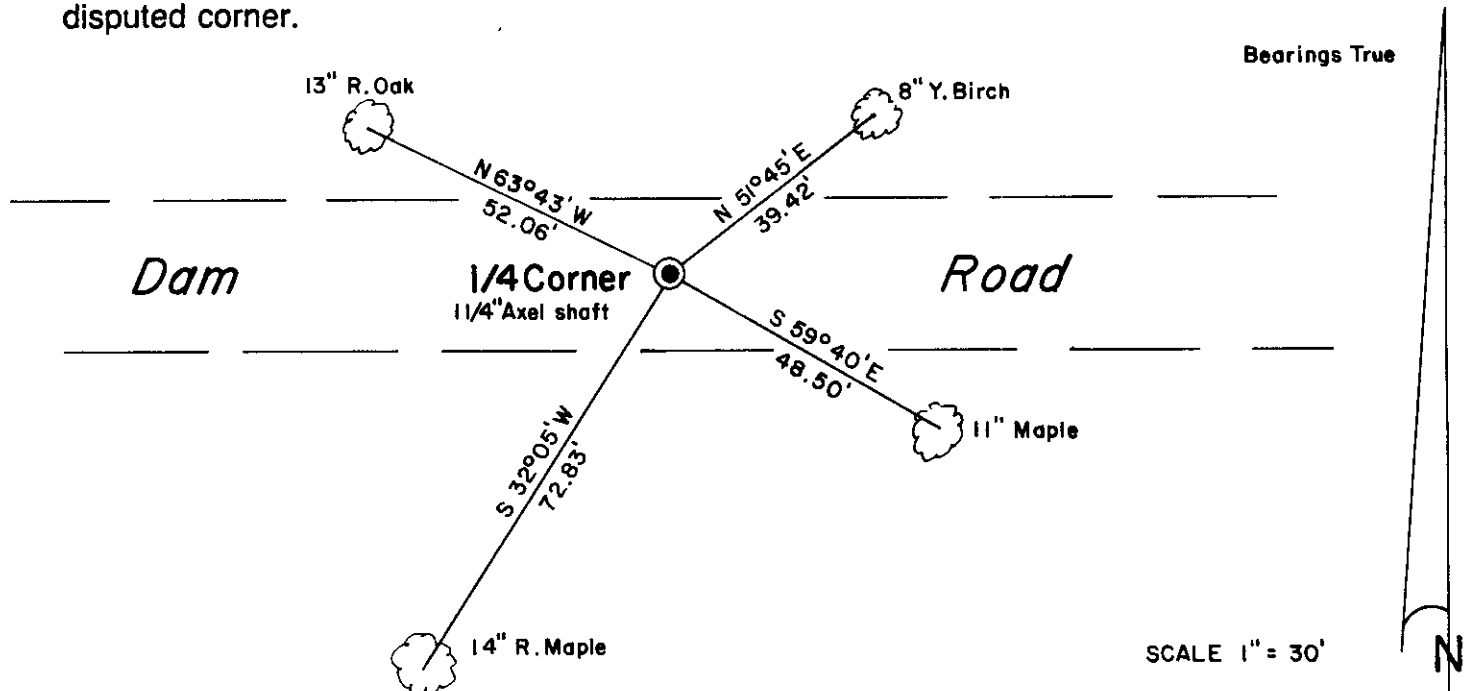
(a) Corner location: Township 36 North
Range 10 East/West
Town/City/Village Pelican
County Oneida



(b) (f) (g) (h) Description of monument found at this corner and if it was accepted, state all evidence (material, testimonial, occupational, plats, records, other monuments) used as a basis for accepting. If not accepted or if nothing was found, state evidence used as basis for establishing location. If reestablished through lost corner proportionate methods, indicate all monuments, distances and directions used to establish.

August 1863 - William Daugherty, Deputy Surveyor - Set 1/4 Section post. B.T.'s: Birch 12" N63°W, 23 links - Birch 9", S88°E, 179 links.
1906 - D. H. Vaughan - proportioned corner, Set 1/4 post B.T.'s: Maple 10", N7°W, 41 1/2 links Aspen 10", S5°W, 11 1/2 links.
August 1, 1986 - James D.Rein - found 1 1/2" iron axle shaft, flush in gravel road. Now set down 8". Found 4 Existing B.T.'s: 14" R. Maple, S32°05'W, 72.83 feet to Railroad spike in tree - 11" Maple, S59°-40'E, 48.50 feet to Railroad spike in tree - 13 " R. Oak, N63°-43'W, 52.06 feet to aluminum nail set in side of tree - 8" Y. Birch, N51°-45'E, 39.42 feet to aluminum nail set in side of tree.

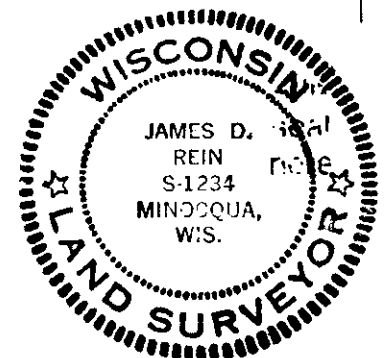
(c) (d) (e) Plan view of corner with ties to at least 4 witness monuments. If in disagreement with previously established corner, show the distances between the two corners and also indicate the ties to the disputed corner.



(i) I, James D. Rein, Registered Land Surveyor No. S-1234
(type or print name) certify that the corner location on this record was determined by me or under my direction and control and that this U.S. Public Land Survey Monument Record is correct and complete to the best of my knowledge and belief.

James D. Rein
Signature

August 7th, 1986
Date



Index No. E-7

3610 050020

U.S. PUBLIC LAND SURVEY MONUMENT RECORD

Note: This form is intended and designed to fulfill all requirements of Wisconsin Administrative Code, Chapter A-E 7.08 U.S. Public Land Survey Monument Record (3)(a)(b)(c)(d)(e)(f)(g)(h)(i). An additional sheet may be added if necessary to conform with said requirements.

(a) Corner location: Township 36 North
 Range 10 East/West

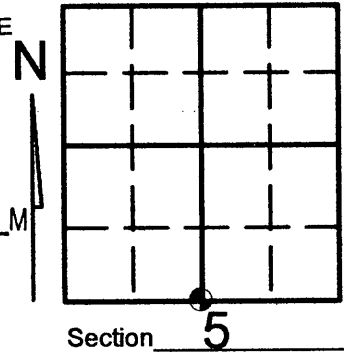
Town/City/Village PELICAN
 County ONEIDA

REGISTER OF DEEDS OFFICE
 ONEIDA COUNTY

FILED

MAY 07 2012

AT _____ O'CLOCK
THOMAS H. LEIGHTON
 REGISTER OF DEEDS

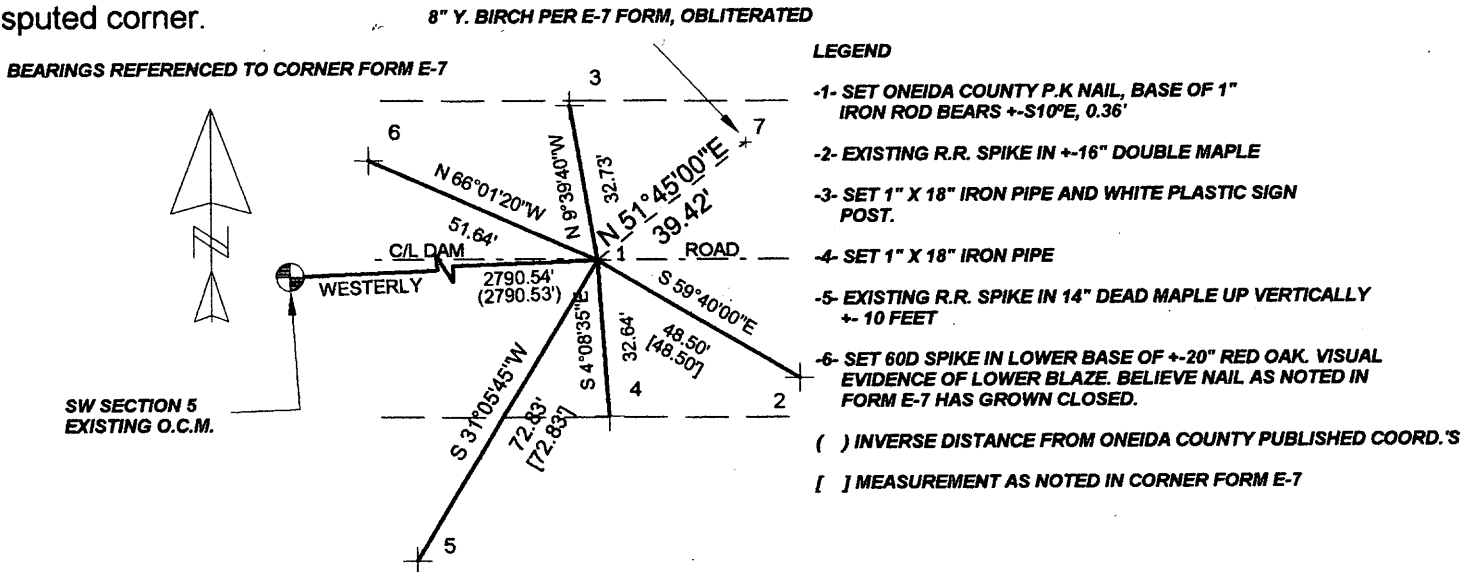


(b) (f) (g) (h) Description of monument found at this corner and if it was accepted, state all evidence (material, testimonial, occupational, plats, records, other monuments) used as a basis for accepting. If not accepted or if nothing was found, state evidence used as basis for establishing location. If reestablished through lost corner proportionate methods, indicate all monuments, distances and directions used to establish. Indicate type of monument found or set and sign post.

SEE CORNER FORM E-7 FOR HISTORY OF CORNER

MAY 4, 2012: Kevin Bixby found a railroad spike in a 16" double maple and a railroad spike in a 14" maple, now dead and up vertically +-10' and set a Oneida County P.K. nail from those measurements and above noted accessories as noted in corner form E-7 and witnessed as shown below.

(c) (d) (e) Plan view of corner with ties to at least 4 witness monuments. If in disagreement with previously established corner, show the distances between the two corners and also indicate the ties to the disputed corner.



(i) I, KEVIN P. BIXBY

(type or print name) certify that the corner location on this record was determined by me or under my direction and control and that this U.S. Public Land Survey Monument Record is correct and complete to the best of my knowledge and belief.

Kevin P. Bixby
 Signature

5/04/12
 Date



Stamp

3610050020

Index No.

U.S. PUBLIC LAND SURVEY MONUMENT RECORD

NOTE: This form is intended and designed to fulfill all requirements of Wisconsin Administrative Code, Chapter A-E 7.08 U.S. Public Land Survey Monument Record. An additional sheet may be added if necessary to conform with said requirements.

CORNER LOCATION

Quarter Corner common to Sections 5 and 8.
Township 36 North, Range 10 East of the 4th P.M.
Town of Pelican, Oneida County, Wisconsin

REGISTER OF DEEDS OFFICE
ONEIDA COUNTY
FILED

JAN 05 2016

6	5	4	3	2	1
7	8	9	10	11	12
18	17	16	15	14	13
19	20	21	22	23	24
30	29	28	27	26	25
31	32	33	34	35	36

T36N - R10E

HISTORY OF ORIGINAL CORNER ESTABLISHMENT

ORIGINAL SURVEYOR: Wm. Daugherty
DATE OF SURVEY: 1863
ORIGINAL ACCESSORIES: Set wood post
12" Birch, N63°W, 23 lks
9" Birch, N7°W, 179 lks

AT _____ O'CLOCK _____ M
KYLE J. FRANSON
REGISTER OF DEEDS

DESCRIPTION OF MONUMENT FOUND AT THIS CORNER AND IF IT WAS ACCEPTED, STATE ALL EVIDENCE (MATERIAL, TESTIMONIAL, OCCUPATIONAL, PLATS, RECORDS, OTHER MONUMENTS) USED AS A BASIS FOR ACCEPTING. IF NOT ACCEPTED OR IF NOTHING WAS FOUND, STATE EVIDENCE USED AS BASIS FOR ESTABLISHING LOCATION. IF RE-ESTABLISHED THROUGH LOST CORNER PROPORTIONATE METHODS, INDICATE ALL MONUMENTS, DISTANCES AND DIRECTIONS USED TO ESTABLISH. INDICATE TYPE OF MONUMENT AND SIGN POST FOUND OR SET.

6/05/1906 D.H. Vaughan, Oneida Co. Surveyor, set corner by proportion made BTs - 10" Maple, N7°W, 41.5 lks, 10" Aspen, S5°W, 11.25 lks.

8/01/1986 James D. Rein recovered a 1.25 Axle Shaft flush in gravel road. Set it 8" down. Found 4 existing BTs as shown on 1986 tiesheet.

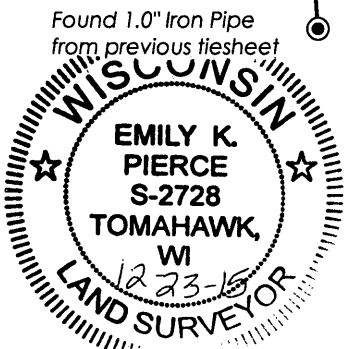
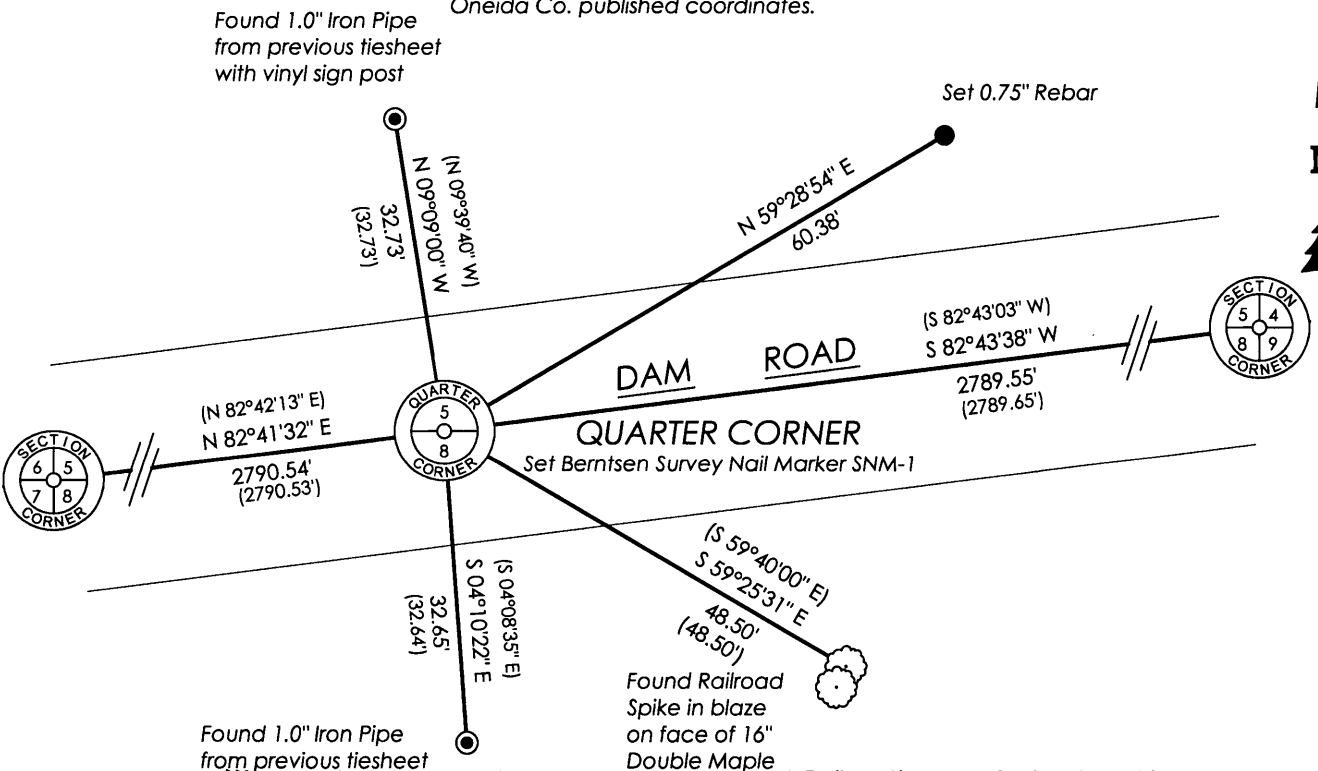
5/04/2012 Kevin Bixby visited corner location. He found a railroad spike to a 16" double maple to the southeast and a railroad spike on a dead 14" maple stub to the southwest. Set a p.k. nail from the measurements as shown on previous tiesheet. This matched measurement to the southwest section corner of section 5. Set three additional ties, one being to a nail in a red oak with a visible scar, believed to be a previous tie on subsequent tiesheet.

12/22/2015 I visited corner location after road construction and repavement and found three remaining ties. Intersected ties and measurement to the southwest corner of section 5 on 2012 tiesheet. Ties intersected well and matched distance to said southwest corner. Set a Berntsen survey nail marker (SNM-1) at the corner location and set one additional tie to the northeast. Red oak from 1986 tiesheet still exists, but blaze is overgrown. Did not find nail in it as stated on 2012 tiesheet. GPS observation was taken on corner location in Oneida County coordinates, NAD 83(2011), N: 162,453.99, E: 300,455.68.

PLAN VIEW OF CORNER WITH TIES TO AT LEAST 4 WITNESS MONUMENTS. IF IN DISAGREEMENT WITH PREVIOUSLY ESTABLISHED CORNER, SHOW THE DISTANCES BETWEEN THE TWO CORNERS AND ALSO INDICATE THE TIES TO THE DISPUTED.

NOTE: Dimensions in parenthesis to ties were taken from 2012 tiesheet. Dimensions in parenthesis to section corners were from Oneida Co. published coordinates.

SCALE: 1" = 20'
Bearings Oneida County Grid



I, Emily K. Pierce, Professional Land Surveyor No. S-2728, hereby certify that the corner location on this record was determined by me or under my direction and control and that this U.S. Public Land Survey Monument Record is correct and complete to the best of my knowledge and belief.

Emily K. Pierce
Emily K. Pierce, PLS No. S-2728
STEIGERWALDT LAND SURVEYING, LLC

3610050020