

# U.S. PUBLIC LAND SURVEY MONUMENT RECORD

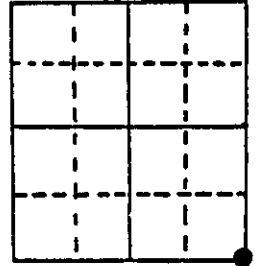
**Note:** This form is intended and designed to fulfill all requirements of Wisconsin Administrative Code, Chapter A-E 5.02, U.S. Public Land Survey Monument Record (3) (a) (b) (c) (d) (e) (f) (g) (h) (i). An additional sheet may be added if necessary to conform with said requirements.

(a) Corner location: Township 36 North

Range 10 East/West

Town/City/Village Pelican

County Oneida



Section 6

(b) (f) (g) (h) Description of monument found at this corner and if it was accepted, state all evidence (material, testimonial, occupational, plats, records, other monuments) used as a basis for accepting. If not accepted or if nothing was found, state evidence used as basis for establishing location. If reestablished through lost corner proportionate methods, indicate all monuments, distances and directions used to establish.

August 1863 - William E. Daugherty, Deputy Surveyor - Set post for corner to Sections 5, 6, 7 and 8. Original BT's: Tamarac 6" N50°E 17 links; Tamarac 6" S72°W 11 links.

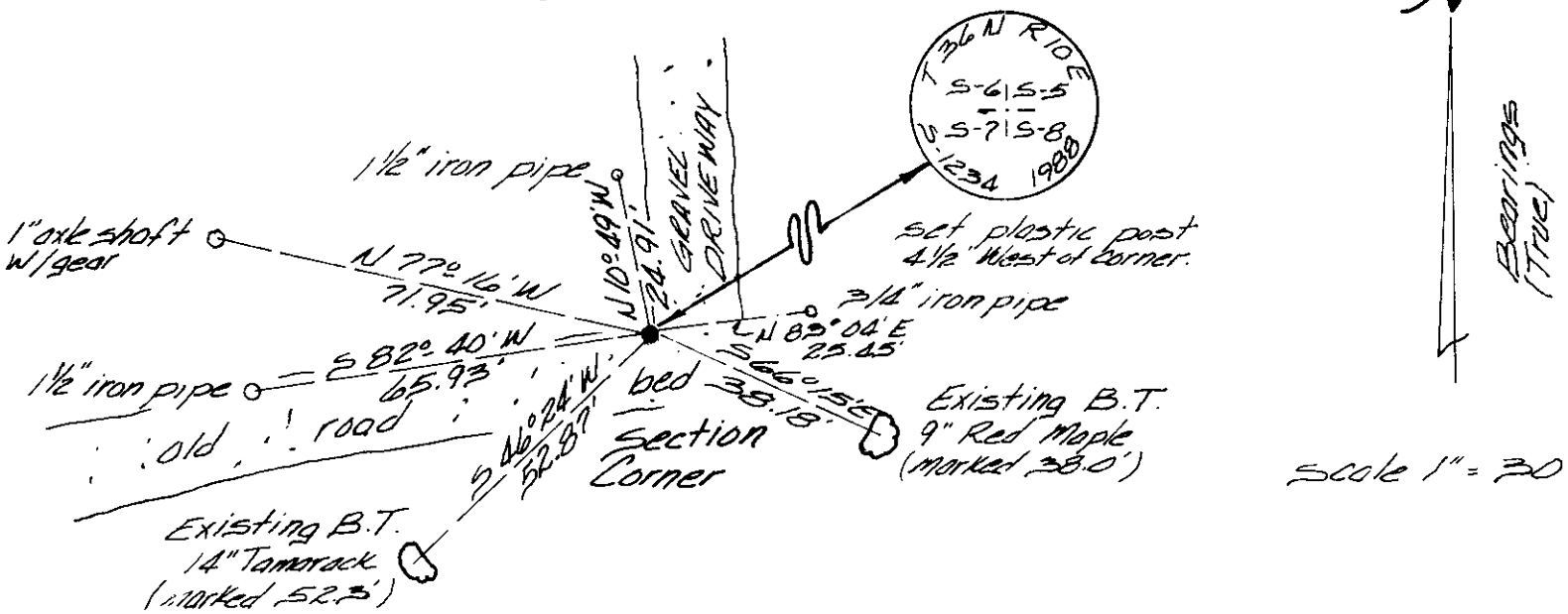
June 5, 1906 - D.H. Vaughan, Oneida County Surveyor, Set corner by proportion made BT's Maple N6°E, 47 links, Birch S6°W, 39½ links

November 1930 - H.C. Hall, Oneida County Surveyor - "Identified Allen's corner - to Section 5, 6, 7 and 8 by an iron pipe at north edge of road form which his bearings meas. O.K." New BT's Maple 8" N44°E, .407 chains; Maple 9" N6°W, .929 chains.

March 1938 James D. Rein, RLS - Recovered 1½" I.P. bent NW by plow at corner of driveway and public road. Cross measured Existing - bearing trees 9" Red Maple S66°15', (Marked 38.0 feet) and a 14" Tamarack S46°24'W. (Marked 52.3 feet. Base of pipe fit bearing tree distances measured to chop blaze in bear trees. I replaced pipe with a capped 2" dia. X 30" long aluminum monument and re-measured bearing trees to aluminum nails set in center of root crown on side of.

(c) (d) (e) Plan view of corner with ties to at least 4 witness monuments. If in disagreement with previously established corner, show the distances between the two corners and also indicate the ties to the disputed corner.

trees facing corner. Made additional ties to existing iron monuments as shown in plan view.



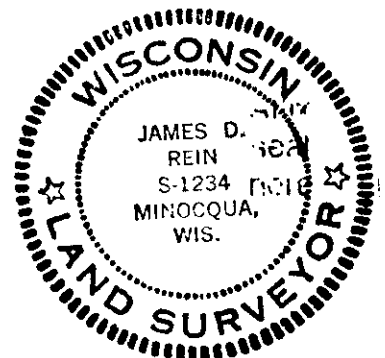
(i) I, James D. Rein, Registered Land Surveyor No. s-1234

(type or print name) certify that the corner location on this record was determined by me or under my direction and control and that this U.S. Public Land Survey Monument Record is correct and complete to the best of my knowledge and belief.

James D. Rein  
Signature

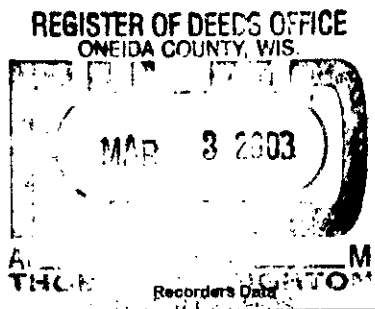
April 9th, 1988

Date



Index No. E-5

3610060000



This form is intended to fulfill the requirements of Chapter A-E 7.08 (3)(a) thru (i) U.S. Public Land Survey Monument Location Record, Wisconsin Administrative Code. Use the reverse side of form for continuation.

**U.S. PUBLIC LAND SURVEY MONUMENT LOCATION RECORD**

USPLS CORNER: SW SECTION CORNER SECTION: 5 TOWNSHIP: 36 NORTH RANGE: 10 EAST

NAME OF WATERWAY FOR M.C. CORNER : N/A SECTION LINE: N/A

~~(CITY)(VILLAGE)(TOWN)~~ OF: PELICAN COUNTY OF: ONEIDA

Description of monument found or placed and all other evidence used as the basis for monument location; including monuments and related measurements required if the corner location was reestablished by lost corner proportionate methods. Also indicate name of original surveyor, original survey date and the corner monument, bearing trees, witness or other reference monuments established; including measured bearing and distance ties, from available records.

**THIS CORNER RE-REFERENCED WITH APPROVAL OF ONEIDA COUNTY SURVEYOR MICHAEL ROMPORTL BY VERBAL QUERY AT HIS OFFICE ON MAY 14, 2002, AS THE RECORD COUNTY CORNER MONUMENT WAS FOUND DISTURBED.**

This corner was last referenced by James D. Rein/RLS 1234 per U.S. Public Land Survey Monument Record dated April 9, 1988 as filed in Oneida County records, which should be referred to for previous historical documentation.

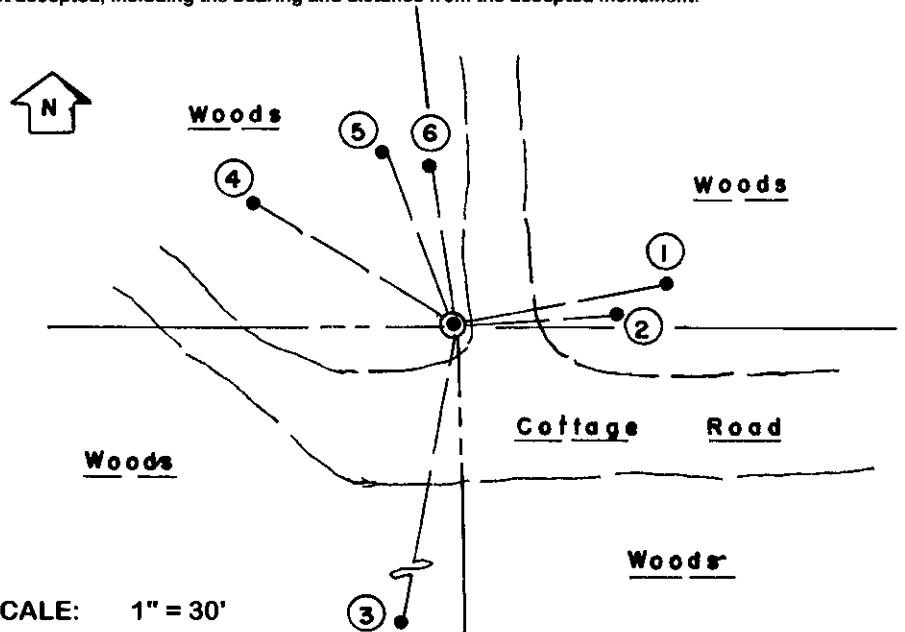
I found the standard 2" dia. aluminum pipe monument disturbed and with stamped Oneida County cap projecting about 2 inches above the West edge of existing private gravel driveway to Fire No. 3346 & 3352 off West end of town road named Cottage Road. I excavated and drove the monument to 6" below grade and adjusted cap center to best fit record ties to remaining references noted on the 1988 location record and measured new ties as indicated below.

The 1988 SE Mr BT has been damaged by recent heavy snow storm and which will be cut down by adjacent owner William Huber, but above lower blaze fissure and tie point. The 1988 SW iron pipe reference was detected by MLR but is obviously disturbed under and/or within a large graded up stump hump.

Face of standard white poly 'T' marker post also found OK 4.4' West of corner monument per 1988 location record.

This recovery completed May 15, 2002 and directly witnessed by adjacent owner William Huber.

Plan view map of monument location with bearing and distance ties to a minimum of four(4) described witness or reference monuments of concrete, natural stone, iron, live bearing trees or equivalent material. If applicable, also show a minimum of two(2) bearing and distance ties to any other monument found and not accepted; including the bearing and distance from the accepted monument.

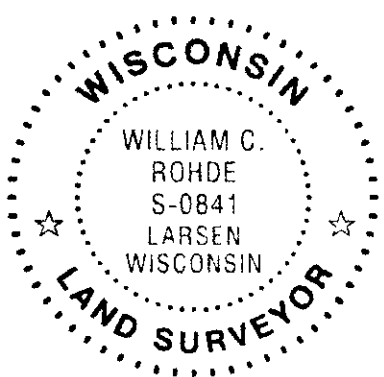


- WITNESS MONUMENT TIES:**
- ① New 6" Fir BT N78°E 33.54'.
  - ② 3/4" dia. iron pipe found with uncapped top 8" up N85°E 25.50'.
  - ③ New 11" Fir BT S10°W 68.08'.
  - ④ New 7" Fir BT N58°W 36.50'.
  - ⑤ New 9" twin Mr BT N23°W 29.64'.
  - ⑥ 1.25" dia. iron pipe found with uncapped top 16" up N10°W 24.90'.
- BT No. 3 has a small open blaze on face 2.5' above grade.

SCALE: 1" = 30'

Unless otherwise indicated, all bearing tree ties are to a .25" dia. by 2.5" long PK nail with a 1.25" dia. steel washer driven into unblazed right face and a .25" dia. by 2.5" long PK nail with a 2" dia. steel washer stamped BT is also driven into unblazed face of bearing tree at DBH; the basis for measured bearings is by compass to nearest degree and all tie distances are measured horizontal by steel tape corrected to nearest 1/100th feet at standard temperature of 68° F.

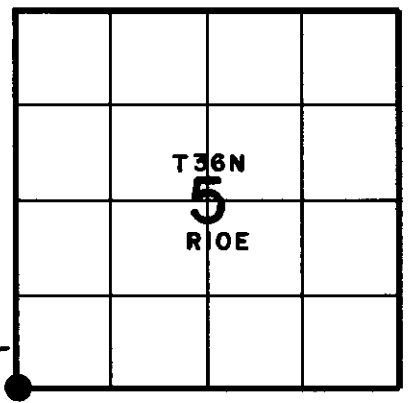
RLS SEAL:



LAND SURVEYOR CERTIFICATE:

I, William C. Rohde, hereby certify that I am duly licensed as a Professional Land Surveyor in the State of Wisconsin; that this USPLS monument location was determined by me and/or under my direct supervision and control; and that this U.S. Public Land Survey Monument Location Record is true and correct to the best of my knowledge and belief.

Signed: *William C. Rohde*  
William C. Rohde RLS 841



SECTION LOCATION MAP  
INDEX NO. E 5

Date Signed: March 1, 2003

3610060000

# U.S. PUBLIC LAND SURVEY MONUMENT RECORD

NOTE: This form is intended and designed to fulfill all requirements of Wisconsin Administrative Code, Chapter A-E 7.08 U.S. Public Land Survey Monument Record. An additional sheet may be added if necessary to conform with said requirements.

**CORNER LOCATION**

Section Corner common to Sections 5, 6, 7, and 8  
Township 36 North, Range 10 East of the 4th P.M.  
Town of Pelican, Oneida County, Wisconsin

REGISTER OF DEEDS OFFICE  
ONEIDA COUNTY  
**FILED**

JAN 05 2016

6	5	4	3	2	1
7	8	9	10	11	12
18	17	16	15	14	13
19	20	21	22	23	24
30	29	28	27	26	25
31	32	33	34	35	36

T36N - R10E

**HISTORY OF ORIGINAL CORNER ESTABLISHMENT**

ORIGINAL SURVEYOR: Wm. Daugherty  
DATE OF SURVEY: 1863  
ORIGINAL ACCESSORIES: Set wood post  
6" Tamarack, N50°E, 17 lks  
6" Tamarack, S72°W, 11 lks

AT \_\_\_\_\_ O'CLOCK \_\_\_\_\_ M  
KYLE J. FRANSON  
REGISTER OF DEEDS

DESCRIPTION OF MONUMENT FOUND AT THIS CORNER AND IF IT WAS ACCEPTED, STATE ALL EVIDENCE (MATERIAL, TESTIMONIAL, OCCUPATIONAL, PLATS, RECORDS, OTHER MONUMENTS) USED AS A BASIS FOR ACCEPTING. IF NOT ACCEPTED OR IF NOTHING WAS FOUND, STATE EVIDENCE USED AS BASIS FOR ESTABLISHING LOCATION. IF RE-ESTABLISHED THROUGH LOST CORNER PROPORTIONATE METHODS, INDICATE ALL MONUMENTS, DISTANCES AND DIRECTIONS USED TO ESTABLISH. INDICATE TYPE OF MONUMENT AND SIGN POST FOUND OR SET.

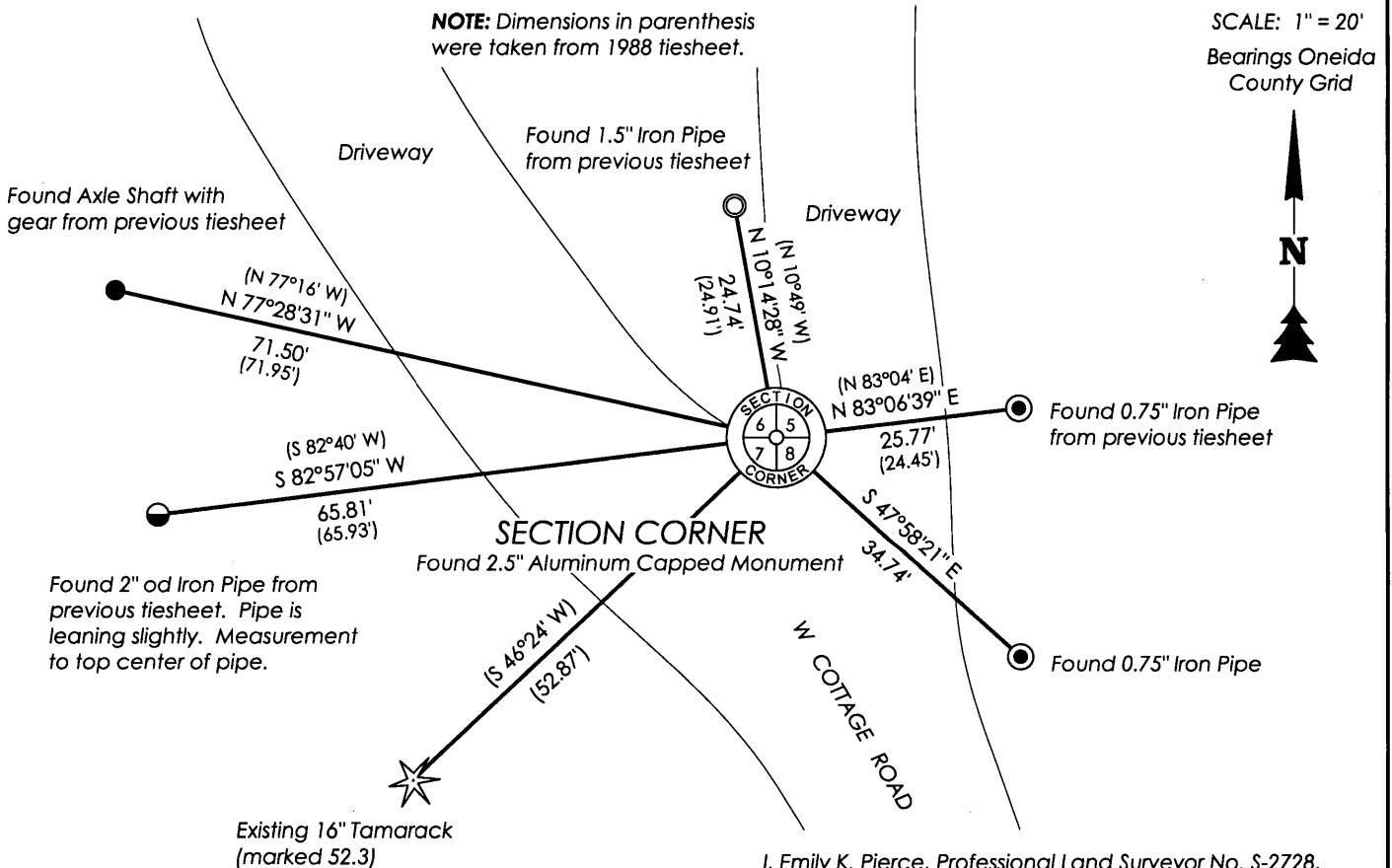
6/05/1906 D.H. Vaughan, Oneida Co. Surveyor, set corner by proportion made BTs - Maple N6°E, 47 links, Birch S6°W, 39.5 links.

11/1930 H.C. Hall, Oneida Co. Surveyor, "Identified Allen's corner to sections 5, 6, 7, and 8 by an iron pipe at the North edge of road from which his bearings measure O.K." New BTs - Maple 8", N44°E, .407 chains, Maple 9", N6°W, .929 Chains.

03/1988 James D. Rein recovered a 1-1/2" iron pipe bent NW by plow at corner of driveway and public road. Cross measured existing bearing trees 9" Maple S66°15E (marked 38.0') and a 14" Tamarack S46°24W (marked 52.3'). Base of pipe fit bearing tree distances measured to chop blaze in bearing trees. Replaces pipe with a capped 2" dia. x 30" long aluminum monument and remeasured bearing trees to aluminum nails set in center of root crown on side of trees facing corner. Made additional ties to existing iron monuments.

12/22/2015 I visited corner location and found an existing 2.5" Aluminum capped monument and 5 remaining ties. Accepted monument as being the same set in 1988. Remeasured tie distances and found an additional pipe to be used as a tie as shown below. Tie to previous BT Red Maple still exists but blaze is overgrown. GPS observation was taken on corner location in Oneida County coordinates, NAD 83(2011), N: 162,099.04, E: 297,687.80.

PLAN VIEW OF CORNER WITH TIES TO AT LEAST 4 WITNESS MONUMENTS. IF IN DISAGREEMENT WITH PREVIOUSLY ESTABLISHED CORNER, SHOW THE DISTANCES BETWEEN THE TWO CORNERS AND ALSO INDICATE THE TIES TO THE DISPUTED.



I, Emily K. Pierce, Professional Land Surveyor No. S-2728, hereby certify that the corner location on this record was determined by me or under my direction and control and that this U.S. Public Land Survey Monument Record is correct and complete to the best of my knowledge and belief.

*Emily K. Pierce*  
Emily K. Pierce, PLS No. S-2728  
STEIGERWALDT LAND SURVEYING, LLC

E-5  
361006 0000