

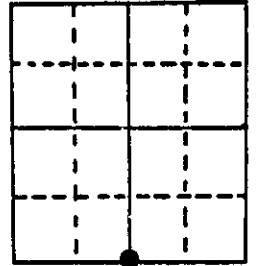
U.S. PUBLIC LAND SURVEY MONUMENT RECORD

Note: This form is intended and designed to fulfill all requirements of Wisconsin Administrative Code, Chapter A-E 5.02, U.S. Public Land Survey Monument Record (3) (a) (b) (c) (d) (e) (f) (g) (h) (i). An additional sheet may be added if necessary to conform with said requirements.

(a) Corner location: Township 36 North
 Range 10 East/West

Town/City/Village Pelican

County Onieda

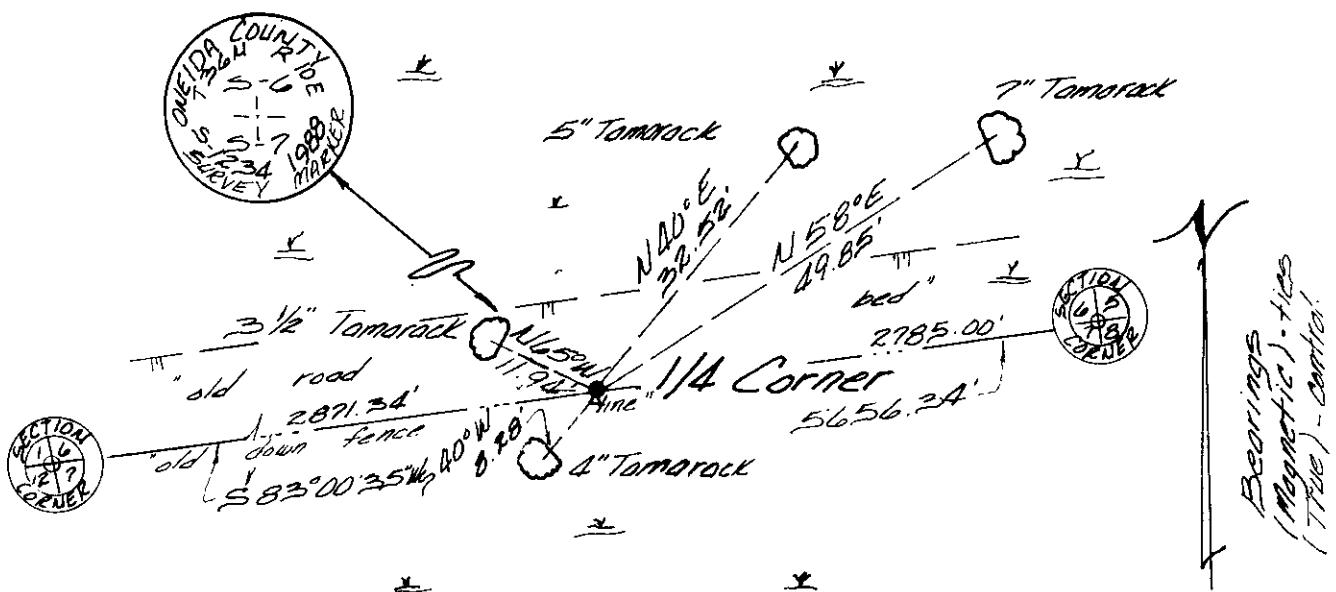


Section 6

(b) (f) (g) (h) Description of monument found at this corner and if it was accepted, state all evidence (material, testimonial, occupational, plats, records, other monuments) used as a basis for accepting. If not accepted or if nothing was found, state evidence used as basis for establishing location. If reestablished through lost corner proportionate methods, indicate all monuments, distances and directions used to establish.

August 1863 - William E. Daugherty, Deputy Surveyor - Set $\frac{1}{4}$ Sec. post Original bearing trees: Aspen 10 N39°W, 19 links; White Pine 10" S19°E, 13 links
 June 5, 1906 - D.H. Vauhan, Oneida County Surveyor - Set $\frac{1}{4}$ Section post by proration between Section Corners for road for the Town of Pelican.
 March 1988 - James D. Rein, RLS - Unable to recover and substantial evidence for corner Re-establishment corner at proportionate position between southwest and southeast corners of Section 6. Set capped 2" dia x 60" long piston type aluminum monument marked as shown in plan view. Set plastic stake 1 foot east of corner. Made bearing trees with aluminum nails in sides of trees facing corner.

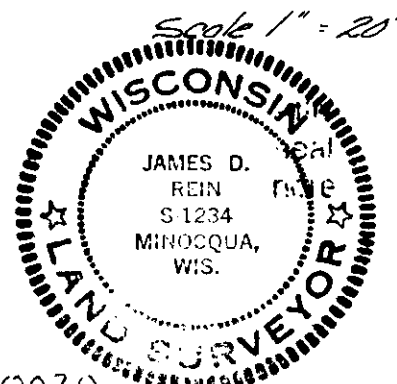
(c) (d) (e) Plan view of corner with ties to at least 4 witness monuments. If in disagreement with previously established corner, show the distances between the two corners and also indicate the ties to the disputed corner.



(i) I, James D. Rein, Registered Land Surveyor No. S-1234
 (type or print name) certify that the corner location on this record was determined by me or under my direction and control and that this U.S. Public Land Survey Monument Record is correct and complete to the best of my knowledge and belief.

James D. Rein
 Signature

April 9th, 1998
 Date



3610060020

Index No. E-3