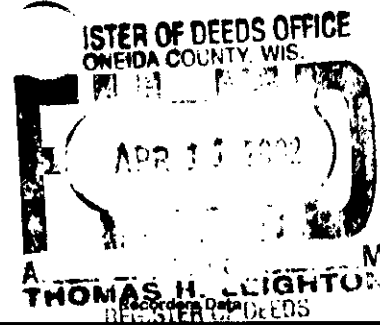


This form is intended to fulfill the requirements of Chapter A-E 7.08 (3)(a) thru (i) U.S. Public Land Survey Monument Location Record, Wisconsin Administrative Code. Use the reverse side of form for continuation.



U.S. PUBLIC LAND SURVEY MONUMENT LOCATION RECORD

USPLS CORNER: NORTH WITNESS MC SECTION: 5 TOWNSHIP: 36 NORTH RANGE: 10 EAST

NAME OF WATERWAY FOR M.C. CORNER: FOURTH LAKE SECTION LINE: WEST

(CITY)(VILLAGE)(TOWN) OF: PELICAN COUNTY OF: ONEIDA

Description of monument found or placed and all other evidence used as the basis for monument location; including monuments and related measurements required if the corner location was reestablished by lost corner proportionate methods. Also indicate name of original surveyor, original survey date and the corner monument, bearing trees, witness or other reference monuments established; including measured bearing and distance ties, from available records.

THIS CORNER LOCATION ESTABLISHED AND REFERENCED BY A FIELD TRAVERSE WITH APPROVAL OF ONEIDA COUNTY SURVEYOR MICHAEL ROMPORTL DUE TO THE DISTURBANCE OF RECORD SURVEY MONUMENTATION. No MC post was set per original 1863 GLO survey notes by William E. Daugherty, as the West line of Section 5 was not inundated by Fourth Lake until its later impoundment. In February 1913, D.H. Vaughan set a wood post as a Witness MC 7.41 chains South of the West 1/4 corner of Section 5 and marked new BTs: a 15" Pw stump N3.5°W 32 links and a 16" Pw stump S12°E 20.5 links per Plat of Survey B-2350 in Oneida County survey records; all are now obliterated as they would fall in present lake bed about 280' South of existing lake shoreline. In January 1936, Harry C. Hall found the iron pipe that he had set as a Witness MC in 1935 and same BTs he had marked: an 18" Pw S25.5°W 0.879 chains and an 18" Pw N21.5°W 0.535 chains per Plat of Survey C-883 in Oneida County survey records; both BTs found with no visible markings by association to following corner location recovery. In December 1958, Keith M. Hall/RLS 594 indicates an assumed iron pipe at 1935/36 Witness corner location and same BTs by Harry C. Hall as 18" Pw S24°20'W 58.0' and 18" Pw N22°40'W 35.3' per Plat of Survey A-877 in Oneida County survey records; using ties from found SW and NW Pw BTs, I found upper 6" of an old 1.5" dia. iron pipe protruding flat to East of existing shoreline bank of Fourth Lake, obviously due to lakewash and wind erosion as evidenced by bermed-up lake bank. By note on Plat of Survey A-877, the Witness MC is located 1 foot South of the intersection of the West line of Section 5 and the South line of land parcel surveyed; so for future simplicity, I chose to establish a new Witness MC location at the intersection of the record survey distances for the South and East lines of the land parcel per Plat of Survey A-877 by Keith M. Hall, by field traverse indicated on reverse of this record, as iron pipe found at lakeshore disturbed, and to reference new Witness MC location from new witness monuments set. This recovery completed November 2, 2001 and witnessed by adjacent owner Robert McCall, Fire No. 3414 Limber Lost Road.

Plan view map of monument location with bearing and distance ties to a minimum of four(4) described witness or reference monuments of concrete, natural stone, iron, live bearing trees or equivalent material. If applicable, also show a minimum of two(2) bearing and distance ties to any other monument found and not accepted; including the bearing and distance from the accepted monument.

SEE REVERSE SIDE FOR LOCATION MAP DETAILS

WITNESS MONUMENT TIES:

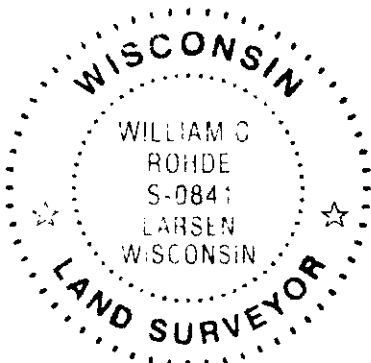
- 1. Standard 2" dia. by 30" long aluminum monument set with stamped Oneida County cap 6" above grade, over 3/4" dia. galvanized iron pipe found, as a new reference monument N07°42'15"W 100.92' from the new unmonumented Witness MC location at lakeshore.
2. Standard 2" dia. by 30" long aluminum monument set with stamped Oneida County cap 3" above grade as a new reference monument at N89°53'43"W 8.61' from the new unmonumented Witness MC location at lakeshore.

See reverse for further references by field traverse data notation.

SCALE:

Unless otherwise indicated, all bearing tree ties are to a .25" dia. by 2.5" long PK nail with a 1.25" dia. steel washer driven into unblazed right face and a .25" dia. by 2.5" long PK nail with a 2" dia. steel washer stamped BT is also driven into unblazed face of bearing tree at DBH; the basis for measured bearings is by compass to nearest degree and all tie distances are measured horizontal by steel tape corrected to nearest 1/100th feet at standard temperature of 68° F.

RLS SEAL:

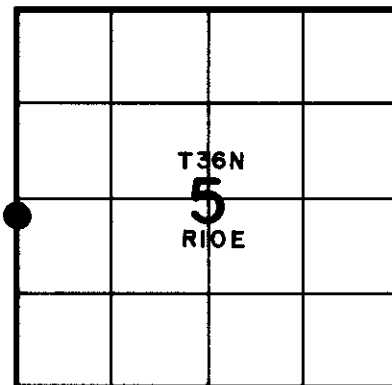


LAND SURVEYOR CERTIFICATE:

I, William C. Rohde, hereby certify that I am duly licensed as a Professional Land Surveyor in the State of Wisconsin; that this USPLS monument location was determined by me and/or under my direct supervision and control; and that this U.S. Public Land Survey Monument Location Record is true and correct to the best of my knowledge and belief.

Signed: [Signature] William C. Rohde RLS 841

Date Signed: March 25, 2002



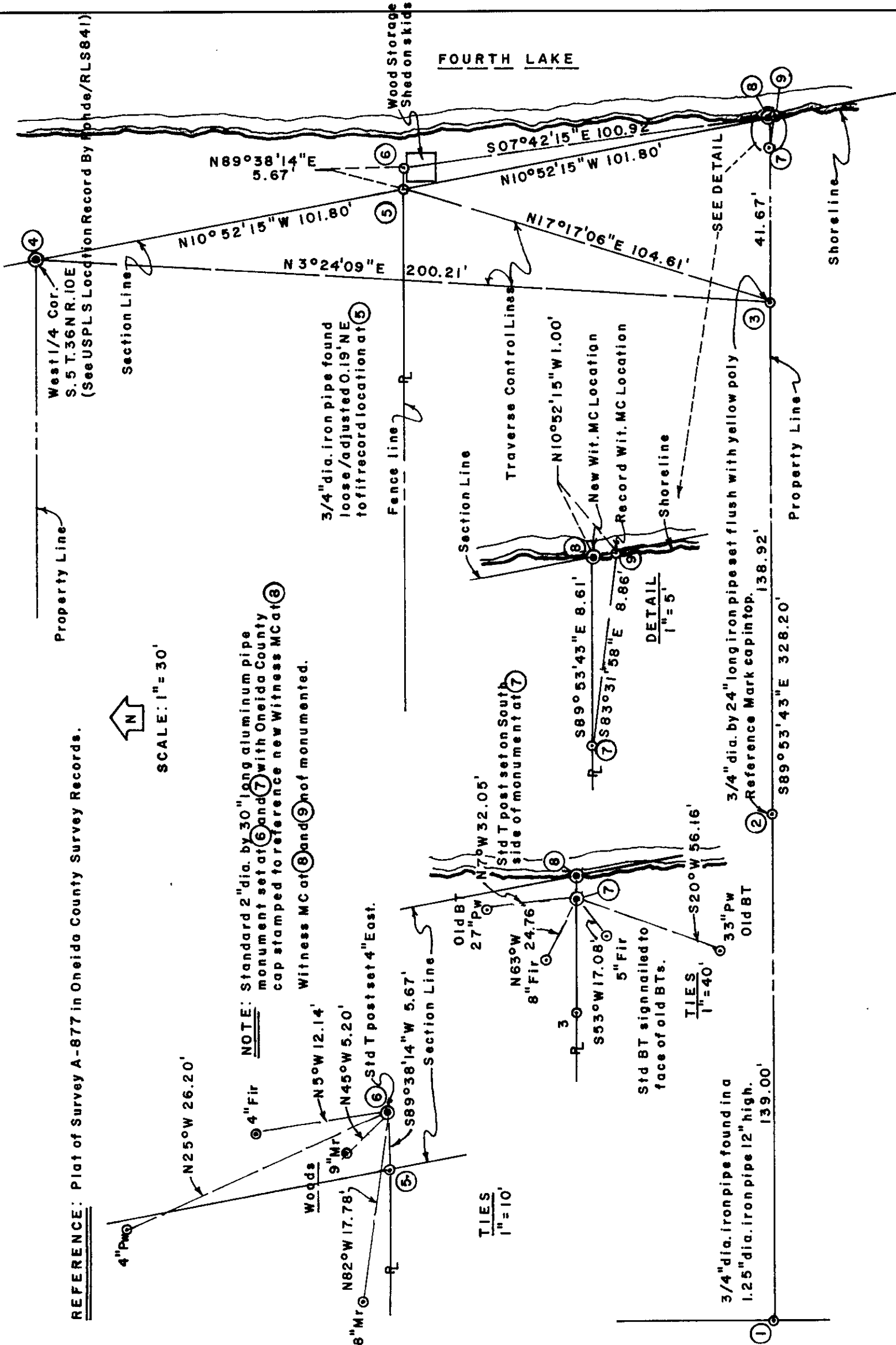
SECTION LOCATION MAP

INDEX NO. C D S

REFERENCE: Plot of Survey A-877 in Oneida County Survey Records.



SCALE: 1" = 30'



NOTE: Standard 2" dia. by 30" long aluminum pipe monument set at ⑥ and ⑦ with Oneida County cap stamped to reference new Witness MC at ⑧

Witness MC at ⑧ and ⑨ not monumented.

TIES
1" = 10'

TIES
1" = 40'

DETAIL
1" = 5'

3/4" dia. iron pipe found in a
1.25" dia. iron pipe 12" high.
139.00'

3/4" dia. by 24" long iron pipe set flush with yellow poly
Reference Mark cap intop.
138.92'

3/4" dia. iron pipe found
loose/adjusted 0.19' NE
to fit record location at ⑤

Traverse Control Lines

Section Line

Section Line

Property Line

West 1/4 Cor.
S. 5 T. 36 N. R. 10 E
(See USPLS Location Record By Mapde/RLS841)

FOURTH LAKE

Wood Storage
Shed on skids

Shoreline

Property Line

SEE DETAIL

Std BT signnailed to
face of old BTs.

Std T post set on South
side of monument at ⑦

New Wit. MC Location
Record Wit. MC Location

33" PW
Old BT

Old B
27" PW

8" Fir 24.76

5" Fir
S53°W 17.08'

S20°W 56.16'

9" Mr
N82°W 17.78'

Std T post set 4" East.

S89°38'14" W 5.67'

N7°W 32.05'

S89°53'43" E 8.61'

S83°31'58" E 8.86'

N10°52'15" W 1.00'

N17°17'06" E 104.61'

N10°52'15" W 101.80'

S07°42'15" E 100.92'

N89°38'14" E 5.67'

N3°24'09" E 200.21'

Fence line

Section Line

Property Line

Shoreline

Shoreline

Shoreline

Shoreline

Shoreline

Shoreline

Shoreline

Shoreline

Shoreline

Shoreline

Shoreline