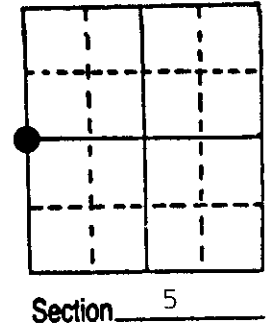
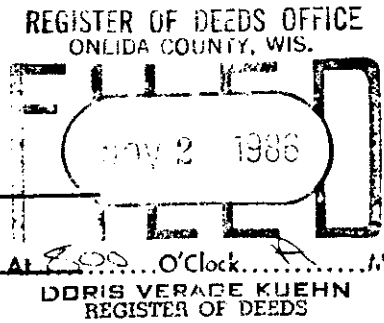


U.S. PUBLIC LAND SURVEY MONUMENT RECORD

Note: This form is intended and designed to fulfill all requirements of Wisconsin Administrative Code, Chapter A-E 5.02, U.S. Public Land Survey Monument Record (3) (a) (b) (c) (d) (e) (f) (g) (h) (i). An additional sheet may be added if necessary to conform with said requirements.

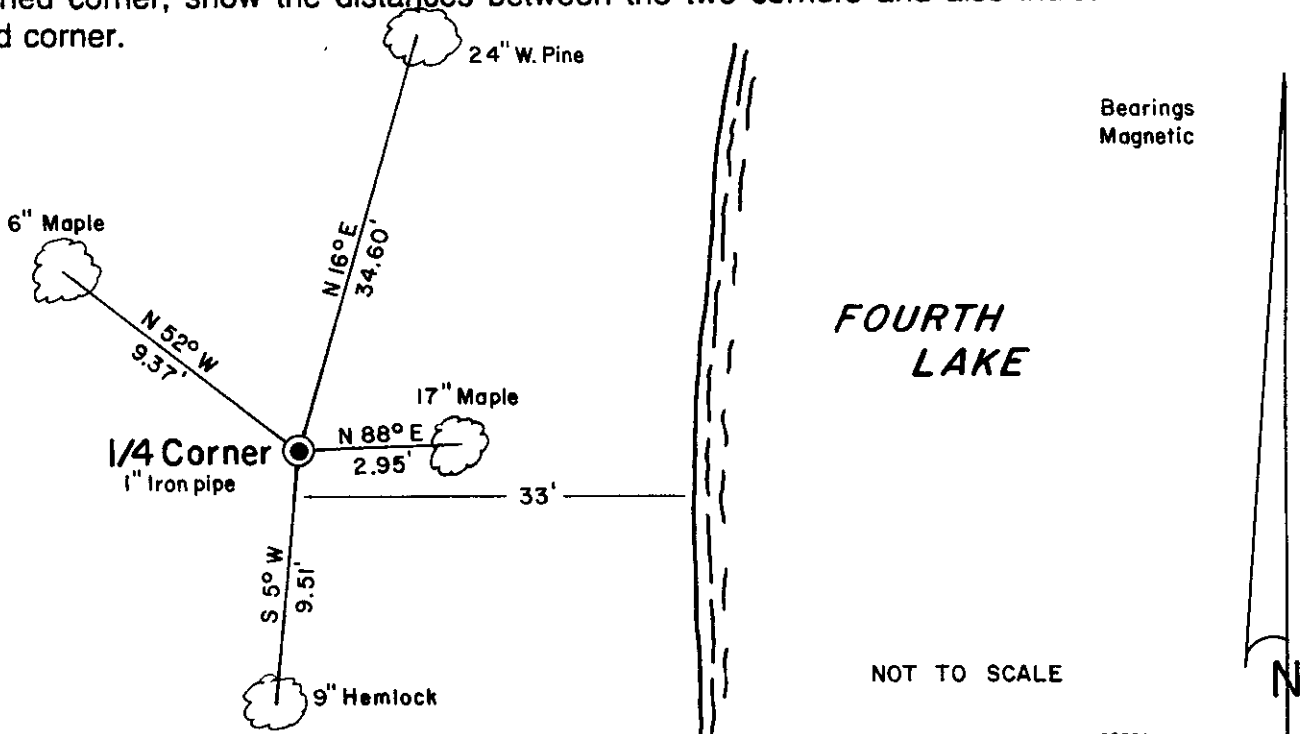
(a) Corner location: Township 36 North
 Range 10 East ~~West~~
 Town/City/Village Pelican
 County Oneida



(b) (f) (g) (h) Description of monument found at this corner and if it was accepted, state all evidence (material, testimonial, occupational, plats, records, other monuments) used as a basis for accepting. If not accepted or if nothing was found, state evidence used as basis for establishing location. If reestablished through lost corner proportionate methods, indicate all monuments, distances and directions used to establish.

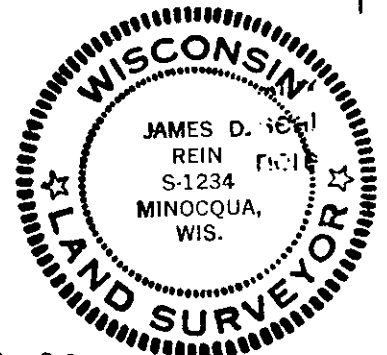
August, 1863 - William Daugherty, Deputy Surveyor - Set 1/4 Section post, B.T.'s: Ironwood 7", N27°W, 7 links - Birch 10", S16°E, 242 links.
 1913 - D. H. Vaughn - proportioned corner, Set post B.T.'s: Fir 10", N75°E, 23 1/2 links - Fir 8", S45°W, 22 1/2 links.
 Feb. 6, 1950 - Genisot Engineering Co. - Identified corner as iron pipe and show Hall's B.T.'s: W. Pine 18", N18°E, 51.3 links - W. Birch 6", S29°W, 22.4 links - Maple 11", N85°E, 3.9 links.
 August 1, 1986 - James D. Rein - found 1" iron pipe up 4" above ground 33 feet west of Fourth Lake. Existing B.T.'s: 17" Maple, N88°E, 2.95 feet - 24" W. Pine, N16°E, 34.60 feet. Made new B.T.'s 9" Hemlock S5°W, 9.51 feet and 6" Maple, N52°W, 9.37 feet. Distances measured to aluminum nails set in center of root crown on side of trees.

(c) (d) (e) Plan view of corner with ties to at least 4 witness monuments. If in disagreement with previously established corner, show the distances between the two corners and also indicate the ties to the disputed corner.



(i) I, James D. Rein, Registered Land Surveyor No. S-1234
 (type or print name) certify that the corner location on this record was determined by me or under my direction and control and that this U.S. Public Land Survey Monument Record is correct and complete to the best of my knowledge and belief.

James D. Rein Signature August 7th, 1986 Date



Index No. C-5

3610062000

This form is intended to fulfill the requirements of Chapter A-E 7.08 (3)(a) thru (i) U.S. Public Land Survey Monument Location Record, Wisconsin Administrative Code. Use the reverse side of form for continuation.

U.S. PUBLIC LAND SURVEY MONUMENT LOCATION RECORD

Recorders Data

USPLS CORNER: WEST 1/4 CORNER SECTION: 5 TOWNSHIP: 36 NORTH RANGE: 10 EAST

NAME OF WATERWAY FOR M.C. CORNER: N/A SECTION LINE: N/A

(CITY)(VILLAGE)(TOWN) OF: PELICAN COUNTY OF: ONEIDA

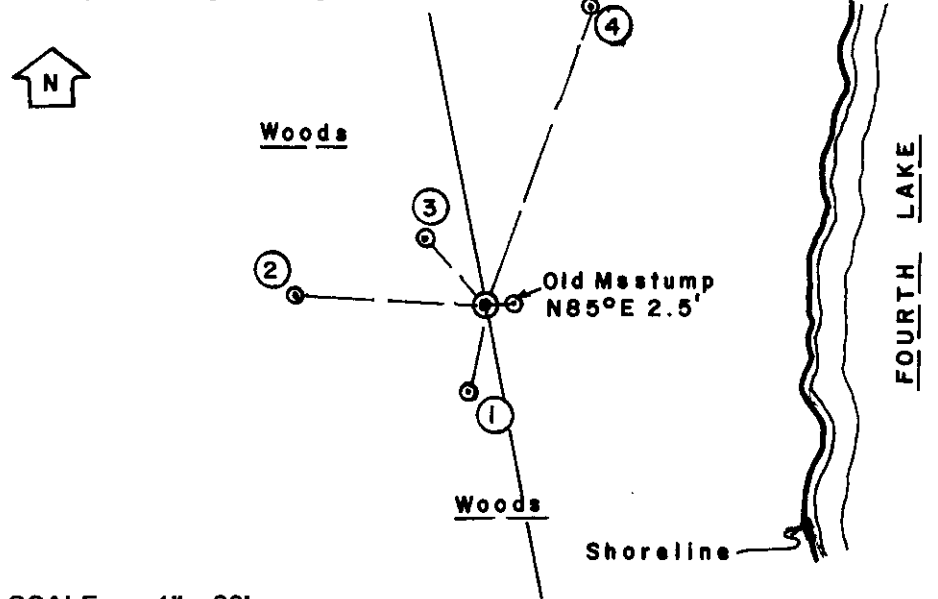
Description of monument found or placed and all other evidence used as the basis for monument location; including monuments and related measurements required if the corner location was reestablished by lost corner proportionate methods. Also indicate name of original surveyor, original survey date and the corner monument, bearing trees, witness or other reference monuments established; including measured bearing and distance ties, from available records.

THIS CORNER REMONUMENTED WITH STANDARD ONEIDA COUNTY ALUMINUM MONUMENT AND REREFERENCED WITH APPROVAL OF ONEIDA COUNTY SURVEYOR MICHAEL ROMPORTL.

Found an old 1" dia. undisturbed iron pipe with uncapped top 4" above grade. I left pipe in place and drove a standard 2" dia. by 30" long aluminum pipe monument with split bottom end and stamped Oneida cap over the iron pipe to 8" above grade. Corner falls near crest of steep bank up and about 34' West of the existing shoreline of Fourth Lake this date. This recovery completed October 17, 2001 and witnessed by Robert McCall, owner at Fire No. 3414 Limber Lost Road.

In August 1863, William E. Daugherty/GLO set a wood post as the original corner and marked OBTs: a 7" Ironwood N27°W 7 links and a 10" Bw S16°E 242 links; all now obliterated. In 1913, D.H. Vaughan found his wood post set by proportion as a Witness MC in 1912 and noted BTs: a 10" Fir N75°E 23.5 links and an 8" Fir S45°W 22.5 links; all now obliterated. In January 1936, Harry C. Hall notes an iron pipe at this Witness MC he had set in January 1935 and the same BTs he had then marked: an 18" Pw N11°E 0.51 chains, a 6" Bw S29°W 0.224 chains and a 11" Maple N85°E 0.039 chains; all per Plat of Survey C-883 and Hall Field Notes Book 1 Pages 137 & 138 in Oneida County survey records. In February 1950, F.R. Wincentsen/RLS 155 of Genisot Engineering Company, Rhinelander, Wis. found Halls 1936 iron pipe at corner and all of Halls BTs per Wincentsen Field Notes Book 1 Page 80 in Oneida County survey records. In December 1958, Keith M. Hall/RLS 594 notes an iron pipe at this corner and BTs: 18" Pw N17°E 33.85', a 6" Bw S28°W 14.6' and a 11" Ms N84°E 2.6' per Plat of Survey A-877 in Oneida County survey records. In August 1986, James D. Rein/RLS 1234 found a 1" dia. iron pipe 4" up at this corner and old record 17" Ms BT NE and 24" Pw BT NE and marked new BTs with aluminum nail in side for ties: S05°W 9.51' to a 9" Hemlock and N52°W 9.37' to a 6" Maple per USPLS Location Record filed 11-2-86.

Plan view map of monument location with bearing and distance ties to a minimum of four(4) described witness or reference monuments of concrete, natural stone, iron, live bearing trees or equivalent material. If applicable, also show a minimum of two(2) bearing and distance ties to any other monument found and not accepted; including the bearing and distance from the accepted monument.

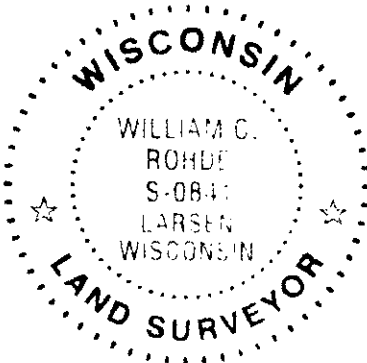


- WITNESS MONUMENT TIES:**
- ① Old BT 11" Hemlock with lower blaze open and scribing plain S11°W 9.24'.
 - ② New BT 5" Fir N87°W 19.97'.
 - ③ Old BT 7" Maple with lower blaze open and scribing plain, N45°W at 9.30'.
 - ④ Old BT 24" Pw with no visible scars, N20°W 33.95' to PK nail/washer in left face. I nailed a standard BT sign to upper face.
- Standard white poly 'T' corner marker post set 6" East of corner monument.

SCALE: 1" = 20'

Unless otherwise indicated, all bearing tree ties are to a .25" dia. by 2.5" long PK nail with a 1.25" dia. steel washer driven into unblazed right face and a .25" dia. by 2.5" long PK nail with a 2" dia. steel washer stamped BT is also driven into unblazed face of bearing tree at DBH; the basis for measured bearings is by compass to nearest degree and all tie distances are measured horizontal by steel tape corrected to nearest 1/100th feet at standard temperature of 68° F.

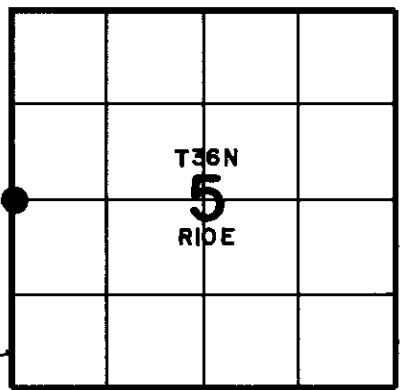
RLS SEAL:



LAND SURVEYOR CERTIFICATE:

I, William C. Rohde, hereby certify that I am duly licensed as a Professional Land Surveyor in the State of Wisconsin; that this USPLS monument location was determined by me and/or under my direct supervision and control; and that this U.S. Public Land Survey Monument Location Record is true and correct to the best of my knowledge and belief.

Signed *William C. Rohde*
William C. Rohde RLS 841



SECTION LOCATION MAP
INDEX NO. C 10