

U.S. PUBLIC LAND SURVEY MONUMENT RECORD

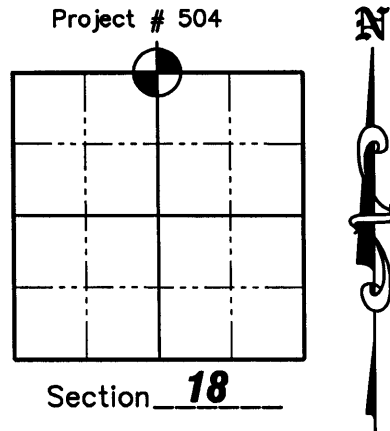
NOTE: This form is intended and designed to fulfill all requirements of Wisconsin Administrative Code, Chapter A-E 7 .08 U.S. Public Land Survey Monument Record (3)(a)(b)(c)(d)(e)(f)(g)(h)(i). An additional sheet may be added if necessary to conform with said requirements.

(a) Corner location: Township 36 North

Range 10 East

Town of PELICAN

County of ONEIDA



(b)(f)(g)(h) Description of monument found at this corner and if it was accepted, state all evidence (material, testimonial, occupation, plats, records, other monuments) used as a basis for accepting. If not accepted or if nothing was found, state evidence used as a basis for establishing location. If reestablished through lost corner proportionate methods, indicate all monuments, distances and directions used to establish. Indicate type of monument found or set and sign post.

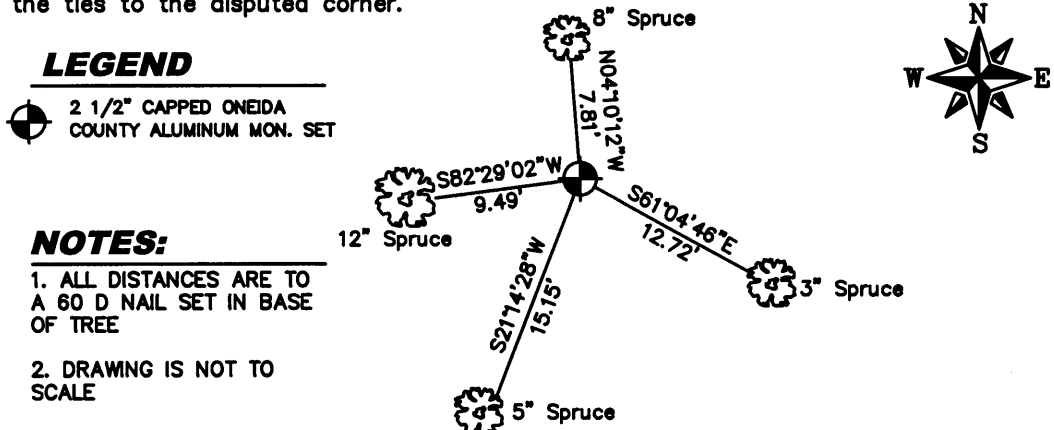
1863 - Original survey by William E. Daugherty, set 1/4 post with bearing trees:
8" Tamarack N76°E, 29 lks; 12" Tamarack S13°W, 11 lks.

6/01/1949 - I. Branham found no evidence of original 1/4 post; He paced east and located the NE corner of section in swamp; Then paced back west $\odot 5^\circ E$ Var. and set approximate 1/4 corner at 8 tallies or approximately 2640 feet West. He then located NW corner of section, North of railroad track about 300', and paced East $\odot 5^\circ E$ Var. and checked 12 feet south of approximate 1/4 corner, approximately 2425 feet East.

10/28/1965 - I. Branham found no evidence of 1/4 post; Set 3" Tamarack post at proportionate distance, 41.16 West and at 43 lks. South of random. Set bearing tree: 3 1/2" Spruce N20°W, 4 lks. (He also noted; compass was very erratic- must be local attraction)

1/02/2004 - Matthew E. Hoglund did an extensive search for the corner and found no evidence of the 1/4 post. We then searched for the NW corner of the section and did not find any evidence of that corner. We did find some "40" corners in the NE 1/4 of the section that have been used by surveyors in the area. We decided to double up using the found center of Section and the found NW corner of the SW 1/4 of the NE 1/4 to reestablish the North 1/4 corner as the best available evidence. (See Sheet 2 hereof). We set a 2-1/2" capped Oneida County aluminum monument at the corner and set 4 new bearing trees as shown below.

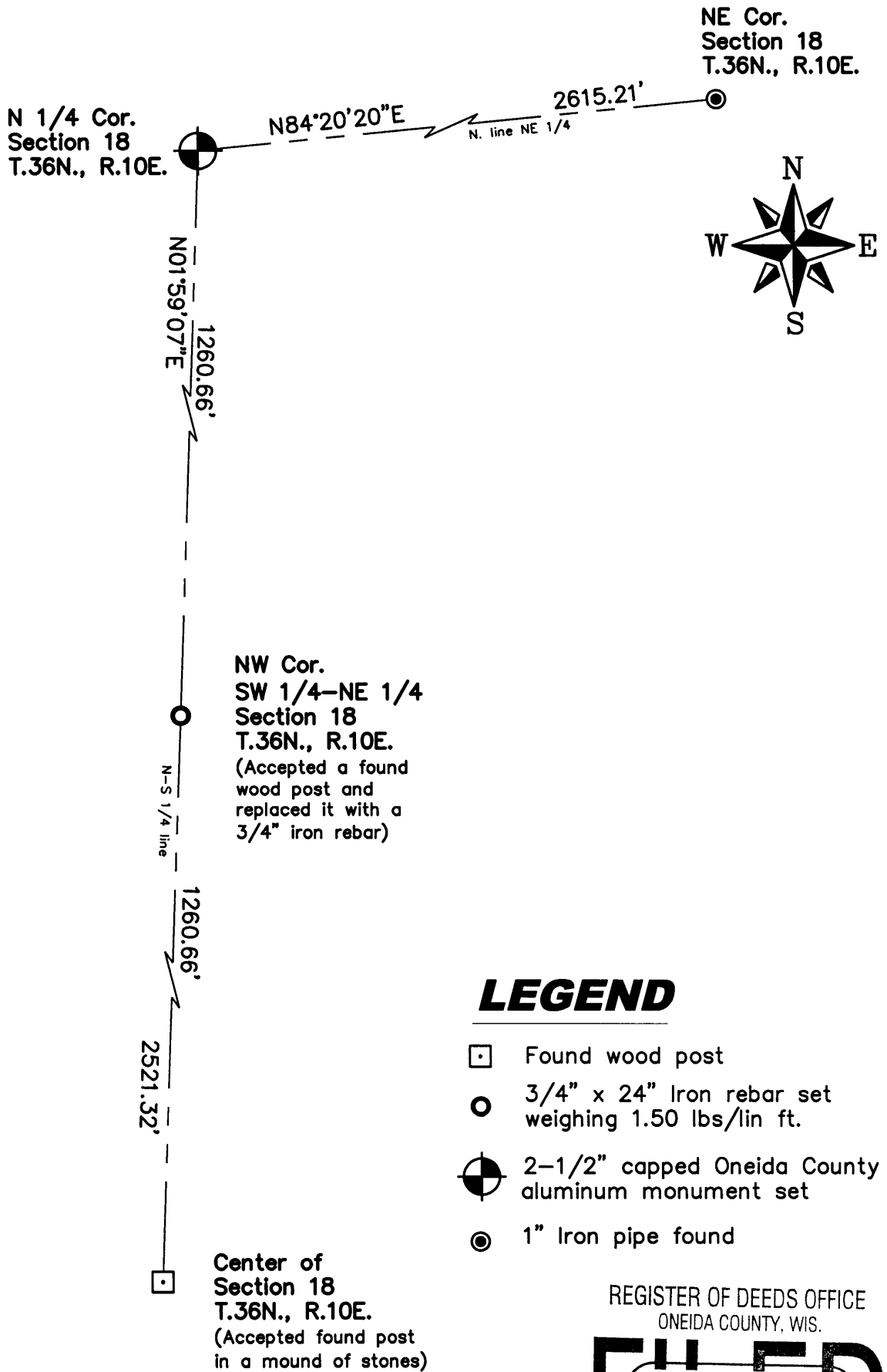
(c)(d)(e) Plan view of corner with ties to at least 4 witness monuments. If in disagreement with previously established corner, show the distances between the two corners and also indicate the ties to the disputed corner.



(i) I, Matthew E. Hoglund, certify that the corner location on this record was determined by me under my direction and control and that this U.S. Public Land Survey Monument is correct and complete to the best of my knowledge and belief.

Signature Matthew E. Hoglund Date 4/9/2007

U.S. PUBLIC LAND SURVEY MONUMENT RECORD



Proj. # 504

3610070020