

This form is intended to fulfill the requirements of Chapter A-E 7.08 (3)(a) thru (j) U.S. Public Land Survey Monument Location Record, Wisconsin Administrative Code. Use the reverse side of form for continuation.

**U.S. PUBLIC LAND SURVEY MONUMENT LOCATION RECORD**

Recorders Data

USPLS CORNER: WEST WITNESS MC SECTION: 17 TOWNSHIP: 36 NORTH RANGE: 10 EAST

NAME OF WATERWAY FOR M.C. CORNER: PELICAN RIVER SECTION LINE: NORTH

(CITY)(VILLAGE)(TOWN) OF: PELICAN COUNTY OF: ONEIDA

Description of monument found or placed and all other evidence used as the basis for monument location; including monuments and related measurements required if the corner location was reestablished by lost corner proportionate methods. Also indicate name of original surveyor, original survey date and the corner monument, bearing trees, witness or other reference monuments established; including measured bearing and distance ties, from available records.

Found an undisturbed 2" dia. galvanized iron pipe with plain pipe cap 16" above grade at this corner location. I removed the 35" long iron pipe and drove a standard 2" dia. by 30" long aluminum pipe monument with cast aluminum point and stamped Oneida County cap in plumb soil cavity left by old iron pipe to 8" above grade. I left old iron pipe flat on grade nearby. Corner is at SE corner of river frontage parcel at Fire No. 3112 Pelican Lake Road and is about 17' West of shoreline of Pelican River this date.

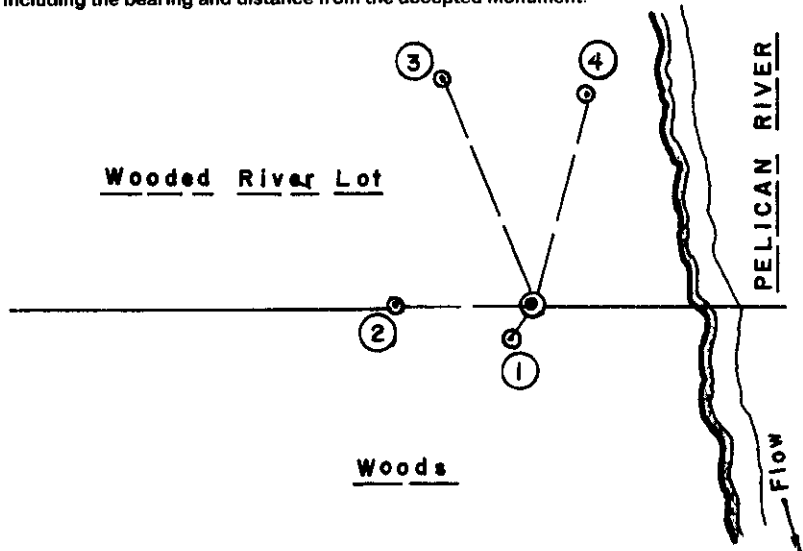
In August 1863, William E. Daugherty/GLO set a wood post as original corner and marked OBTs: a 16" Pw N17°W 20 links and a 7" Bw S36°W 31 links; all now obliterated.

In May 1954, Ivan Branham/RLS 236 set a Witness MC on West bank of Pelican River per Plat of Survey L-1277 and Pages 93-96 in Branham's Field Notes Book 1 in Oneida County survey records; no monument description or BTs listed.

In August 1961, Sy M. Poskie/RLS 140 indicates an iron pipe at this corner per Plat of Survey B-1830 in Oneida County survey records. In September 1975, Lester J. Schmit/RLS 1192 indicates a 2" capped iron pipe at this corner per Plat of Survey B-2756 in Oneida County survey records. In March 1993, Thomas A. Boettcher/RLS 1763 indicates a 2" capped iron pipe at this corner per Plat of Survey B-2776 and Certified Survey Maps 1590 and 1591 in Oneida County records.

This recovery completed October 18, 2001; there were no direct witnesses.

Plan view map of monument location with bearing and distance ties to a minimum of four(4) described witness or reference monuments of concrete, natural stone, iron, live bearing trees or equivalent material. If applicable, also show a minimum of two(2) bearing and distance ties to any other monument found and not accepted; including the bearing and distance from the accepted monument.



**WITNESS MONUMENT TIES:**

- ① New BT 12" Mr of four S35° W4.60'.
- ② New BT 12" Mr West 14.45'.
- ③ New BT Twin 5" Mr N22°W 25.89'.
- ④ New BT 9" Fir N15°E 22.52'.

Standard white poly 'T' corner marker post set 12" East of corner monument.

Corner falls on river bank at toe of steep slope up to West.

SCALE: 1" = 20'

Unless otherwise indicated, all bearing tree ties are to a .25" dia. by 2.5" long PK nail with a 1.25" dia. steel washer driven into unblazed right face and a .25" dia. by 2.5" long PK nail with a 2" dia. steel washer stamped BT is also driven into unblazed face of bearing tree at DBH; the basis for measured bearings is by compass to nearest degree and all tie distances are measured horizontal by steel tape corrected to nearest 1/100th feet at standard temperature of 68° F.

RLS SEAL:



LAND SURVEYOR CERTIFICATE:

I, William C. Rohde, hereby certify that I am duly licensed as a Professional Land Surveyor in the State of Wisconsin; that this USPLS monument location was determined by me and/or under my direct supervision and control; and that this U.S. Public Land Survey Monument Location Record is true and correct to the best of my knowledge and belief.

Signed: *William C. Rohde*  
 William C. Rohde RLS 841

		T36N 17 R10E	

SECTION LOCATION MAP  
 INDEX NO. 5012