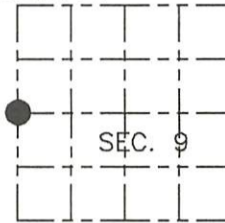


U.S. PUBLIC LAND SURVEY MONUMENT RECORD

Note: This form is intended and designed to fulfill all requirements of Wisconsin Administration Code, Chapter A-E 7.08 U.S. Public Lands Survey Monument Record (3)(a)(b)(c)(d)(e)(f)(g)(h)(i). An additional sheet may be added if necessary to conform with said requirements.

(a) CORNER LOCATION: WISCRS—Oneida County
 1/4 Cor. of Secs. 8 & 9 N: 159,963.02 USft
 Township 36 North E: 303,001.26 USft
 Range 10 East of the 4th P.M. Datum: NAD 1983(2011)
 Town of Pelican County of Oneida



(b) HISTORY OF ORIGINAL CORNER ESTABLISHMENT

Original Surveyor: William E. Daughtery Original Accessories:
 Date of Survey: August 1865 10" cedar S37°W, 8 lks.
 8" tamarck N22°E 11 lks

(b) (f)(g)(h) Description of monument found at this corner and if it was accepted, state all evidence (material, testimonial, occupational, plats, records, other monuments) used as a basis for accepting. If not accepted or if nothing was found, state evidence used as basis for establishing location. If re-established through lost corner proportionate methods, indicate all monuments, distances and directions used to establish. Indicate type of monument and sign post found or set.

December 26, 1907 Vaughn sets 1/4 corner on line between MC on north side Fish Lake and section corner 42.76 ch south of section corner per Bk 5 Pg 174 in Oneida County survey records.

May 1, 1954 Branham, indicates Halls and Vaughns plat/notes at corner.
 per Map# L1277 in Oneida County survey records.

In January 2004, Matthew E Hognlund/RLS 1910 notes a 1" iron pipe at this corner per Plat of Survey B-5524 in Oneida County survey records.

In August of 2005, William E. Badow/RLS 1182 notes a 1" iron pipe at this corner per Plat of Survey C-2157 in Oneida County survey records.

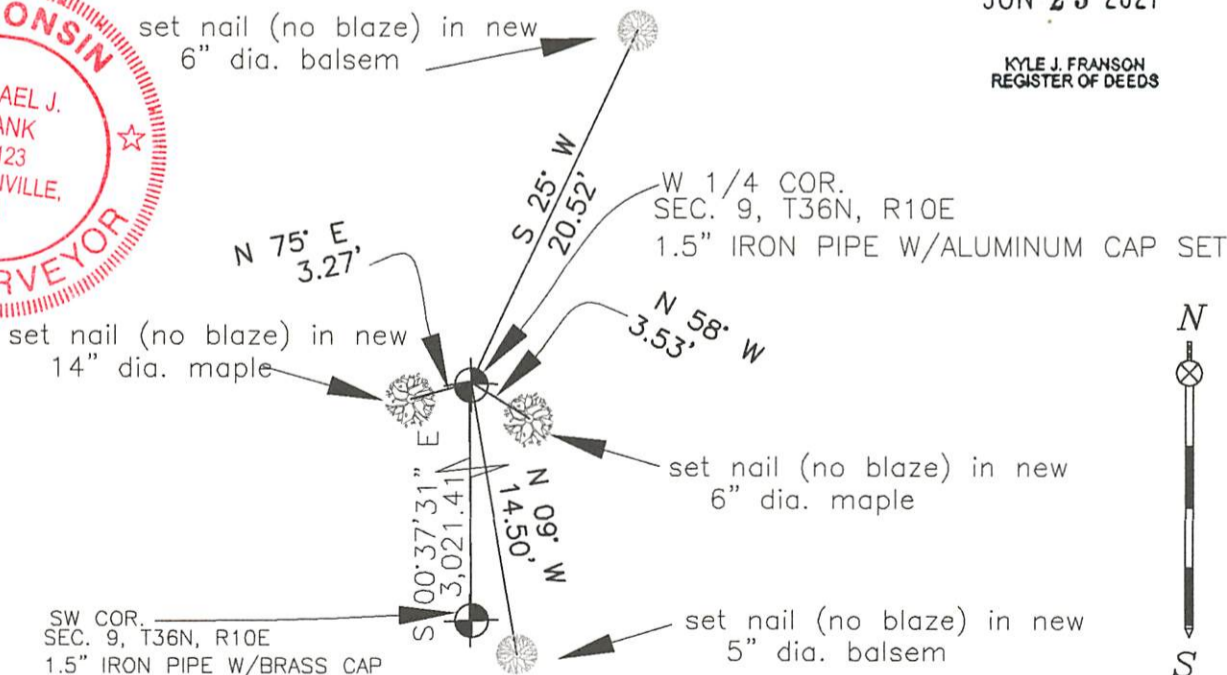
In a MARCH 2021: At a search location determined from measurements of Matthew E Huglund's Plat of Survey B-5524, I search for the 1" dia. iron pipe marking the W1/4 corner he noted on his survey and found no remaining evidence of it, I re-established the W1/4 corner by bearing and distance from the southwest corner of Section 9 to the West 1/4 as shown on his survey as the best remaining evidence of the original corner and established the accessories shown below.

(c)(d)(e) Plan view of corner with ties to at least 4 witness monuments. If in disagreement with previously established corner, show the distances between the two corners and also indicate the ties to the disputed.

REGISTER OF DEEDS OFFICE
 ONEIDA COUNTY
 FILED

JUN 23 2021

KYLE J. FRANSON
 REGISTER OF DEEDS



(i) I, Michael J. Frank, Professional Land Surveyor No. S-2123, hereby certify that the corner location on this record was determined by me or under my direction and control and that this U.S. Public Land Survey Monument Record is correct and complete to the best of my knowledge and belief.

Michael J. Frank 6-17-21
 Signature Date

3610082000 G-9