

CERTIFIED LAND CORNER RESTORATION

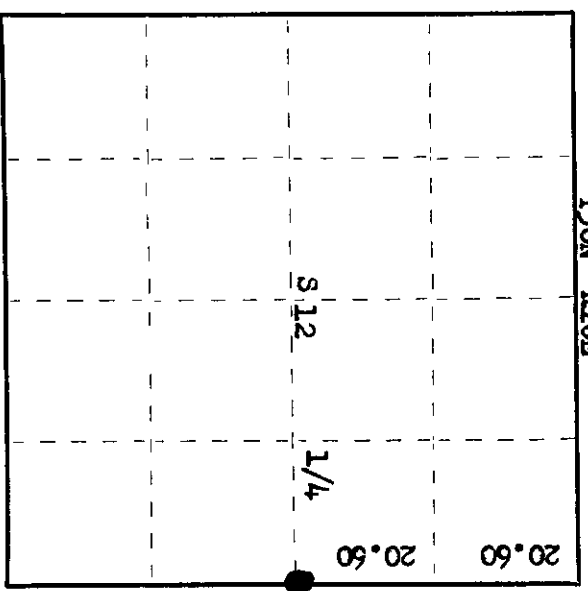
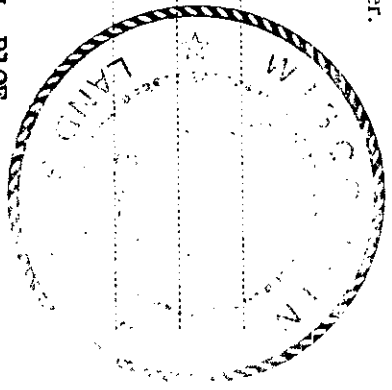
Index No. **G-25**

State of Wisconsin }
County of Oneida } ss.

I Phillip T. Hansen, do hereby certify that on the 6th day of January, 1977, I found evidence of the Quarter corner of Section 7 and 12 Township 36, North, Range 10 & 11 East, Fourth Principal Meridian, as described hereon; and that from this evidence I established a new monument and accessories as described hereon to perpetuate the original location of this corner.

Resident witnesses:

- Glen Barker
- Jim Claffin
- Herb Wagoner



○ = Corner monument restored.

History of original corner establishment: Original Corner established by Hiram C. Fellows, Deputy Surveyor, in 1859, from which Tamarack 10" S 67° E 6 links and Pine 10" S 36° W 8 links. Corner recovered by D.H. Vaughan, County Surveyor, in 1905, who claimed he had found the original BTs.
H.C. Lawrence, Registered Land Surveyor, re-established this corner in 1951. He was unable to find any old evidence of previous establishment. He had recovered Vaughan's N 1/16 Corner, extended his random line, doubling his distance from Section Corner to N 1/16, 20.60 chains to 41.20 to set his new 1/4 corner. Set new post and marked NBTs Spruce Pine 12" S 75° E 30 links, Spruce Pine 10" S 76° W 34 1/2 links.

Description of corner evidence found:
Recovered H.C. Lawrence's 5" pine post, squared and scribed 1/4, down and rotted.
Recovered OBT - Spruce Pine 12" S 75° E 30 links, now a 5' stub, scribed 1/4 S7 NBT.
Spruce Pine 10" S 76° W 34.5 links, now a decayed stump.

Description of monument and accessories I established to perpetuate the original location of this corner.

Replaced point of pine post with 2 1/2" Bernitsen A-1 Federal Monument, aluminum with magnet in cap and base. Cap stamped:
NBTs - Black Spruce 8" N 56° E 1.27 chains, scribed 1/4 BT. T36N R
 Black Spruce 5" N 72° W 1.194 chains, scribed 1/4 BT. 1/4 S12 | S7 11 R
 Jack Pine 6" S 33° W 1.683 chains, scribed 1/4 BT. E S498-1977 E

Dated at Rhinelander, Wis., this 20th day of January, 1977.

Signature Phillip T. Hansen Title Registered Land Surveyor Registration No. S-498
(County Surveyor, Registered Land Surveyor, or other duly authorized official)

Office of Register of Deeds, County of Oneida I hereby certify that the within instrument was filed in this office for record on the 5th day of May, 1977 at 2:00 o'clock P. M.

Tonia Savage Fisher
(Register of Deeds)

By _____ Deputy

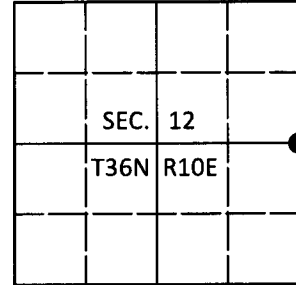
3610122000

U.S. PUBLIC LAND SURVEY MONUMENT RECORD

Note: This form is intended and designed to fulfill all requirements of Wisconsin Administrative Code, Chapter A-E 7.08 U.S. Public Land Survey Monument Record (3)(a-i).

(a) CORNER LOCATION
 1/4 Cor. of Secs. 7 & 12
 Township 36 North
 Range 10 & 11 East of the 4th P.M.
 Town of Monico
 County of Oneida

WISCORS - Oneida County
 N: 158,110.87 USft
 E: 322,844.93 USft
 Datum: NAD 83(2011)
 GNSS Method: RTN - Direct
 GNSS Control: WISCORS VRS



(b) HISTORY OF ORIGINAL CORNER ESTABLISHMENT

Original Surveyor: _____ Original Accessories: _____
 Date of Survey Commenced: _____ See previous USPLS Monument Record
 Completed: _____

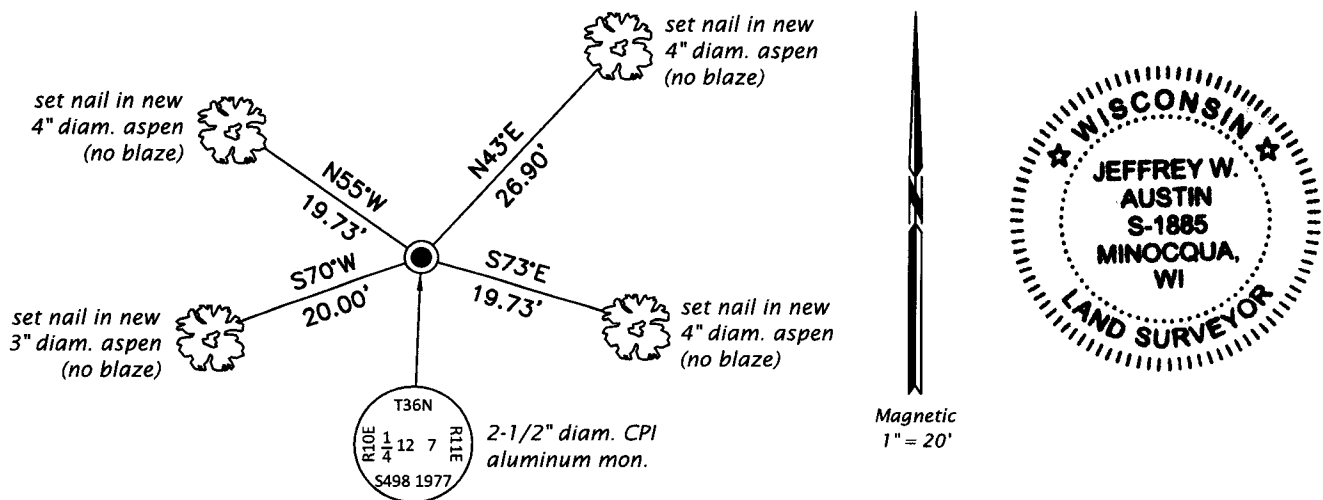
(b)(f)(g)(h) Description of monument found at this corner and if it was accepted, state all evidence (material, testimonial, occupational, plats, records, other monuments) used as a basis for accepting. If not accepted or if nothing was found, state evidence used as basis for establishing location. If re-established through lost corner proportionate methods, indicate all monuments, distances and directions used to establish. Indicate type of monument and sign post found or set.

This is a perpetuation of a previous USPLS Monument Record by Philip T. Hansen, RLS dated January 20, 1977 and filed in the office of the Oneida County Register of Deeds. A complete history of the corner can be found on the previous monument record. I accept the previous location as a true and faithful perpetuation or reestablishment of the original corner location and further perpetuate it as follows.

July 16, 2018: I found and accepted the record monument, a 2-1/2" diam. aluminum pipe with a 3-1/4" diam. Consolidated Papers aluminum cap projecting 26" above the ground surface. All of the record bearing trees are gone. I found or established accessories as shown below. I set a white vinyl sign post bearing West, 1.1 ft.

The coordinate value shown has been verified by at least one of the following methods: 1) comparison to a previously GPS determined published value; 2) the value is the average of two or more GPS observations at a markedly different time; 3) one or more distances were measured back to the GPS observed corner from temporary GPS observed offset locations.

(c)(d)(e) Plan view of corner with ties to at least 4 witness monuments. If in disagreement with previously established corner, show the distances between the two corners and also indicate the ties to the disputed.



(i) I, Jeffrey W. Austin, Professional Land Surveyor No. S-1885, hereby certify that the corner location on this record was determined by me or under my direction and control and that this U.S. Public Land Survey Monument Record is correct and complete to the best of my knowledge and belief.

 Signature Date AVG. 8, 2018