

CERTIFIED LAND CORNER RESTORATION

Index No. N-11

State of Wisconsin }
County of Oneida } ss.

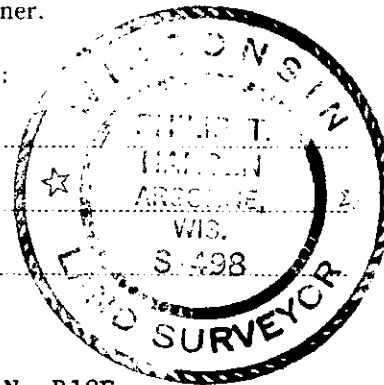
I, Philip T. Hansen, do hereby certify that on the 20th day of June, 1979, I found evidence of the Quarter corner of Sections 16 and 21 Township 36, North, Range 10 East, Fourth Principal Meridian, as described hereon; and that from this evidence I established a new monument and accessories as described hereon to perpetuate the original location of this corner.

Resident witnesses:

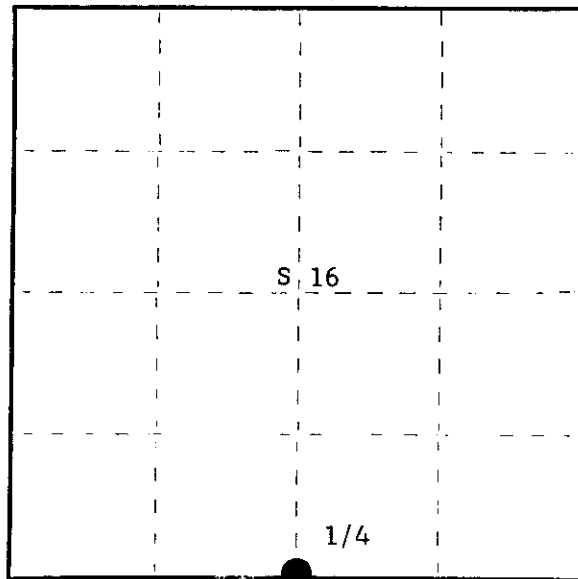
Jim Claflin

Herb Wagoner

Isabel McKay



T36N R10E



○ = Corner monument restored.

History of original corner establishment:

Original corner established by Wm. E. Dougherty, Deputy Surveyor, in 1863, from which pine 10" bears N7°W 48 links and pine 8" bears S41°E 37 links. H.C. Lawrence, Registered Land Surveyor, visited this corner in 1948 and recovered both original BT's. The 8" BT was a high stub, fire scarred, but marks visible. The 10" BT was broken off and fire scarred, chopped out overgrowth which revealed 1/4S mark. Set new post and marked NBT's - B.Pine 5" S7°E 11-1/2 links and B.Pine 6" N7°E 14 links. He revisited corner in 1954. The 5" BT S7°E had been cut but others remained.

Description of corner evidence found:

Recovered H.C. Lawrence's 4" squared tamarack post, scribed 1/4 S S16, 1/4 S S21 in poor condition.

Recovered original BT - Pine 10" N7°W 48 links, snag standing, scribing visible.
B.Pine 8" S41°E 51.0 links, stump remains, blazes apparent.
Sp. Pine 5" S7°E 11.5 links, stump only, scribing visible.
Sp. Pine 6" N7°E 14 links, now a stump, scribing visible.

Description of monument and accessories I established to perpetuate the original location of this corner.

Replaced H.C. Lawrence's post with 2-1/2" Berntsen A-1 Federal Monument, stamped: Monument projects 12".

Marked NBT's - J.Pine 6" S52°E 16.2 links
J.Pine 6" S10°E 6.4 links
W.Birch 5" S59°W 23.2 links
J.Pine 7" N24°E 22.8 links
all BT's scribed 1/4 BT.

S498-1979
T36N R10E
1/4 S 16
 S 21

Dated at Rhineland, Wis., this 28th day of January, 1980

Signature Philip T. Hansen, Title Registered Land Surveyor, Registration No. S-498
(County Surveyor, Registered Land Surveyor, or other duly authorized official)

Office of Register of Deeds, County of Oneida, I hereby certify that the within instrument was filed in this office for record on the 10th day of March, 1980 at 9:10 o'clock a M.

Doris Verage Kuehn
(Register of Deeds)

By.....Deputy

FORM 983 N. C. MILLER CO., MILWAUKEE

3610160020

CERTIFIED LAND CORNER RESTORATION

Index No. N-11

State of Wisconsin }
County of Oneida } ss.

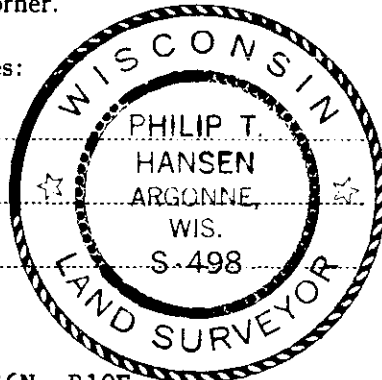
I, Philip T. Hansen, do hereby certify that on the 20th day of June, 1979, I found evidence of the Quarter corner of Sections 16 and 21 Township 36, North, Range 10 East, Fourth Principal Meridian, as described hereon; and that from this evidence I established a new monument and accessories as described hereon to perpetuate the original location of this corner.

Resident witnesses:

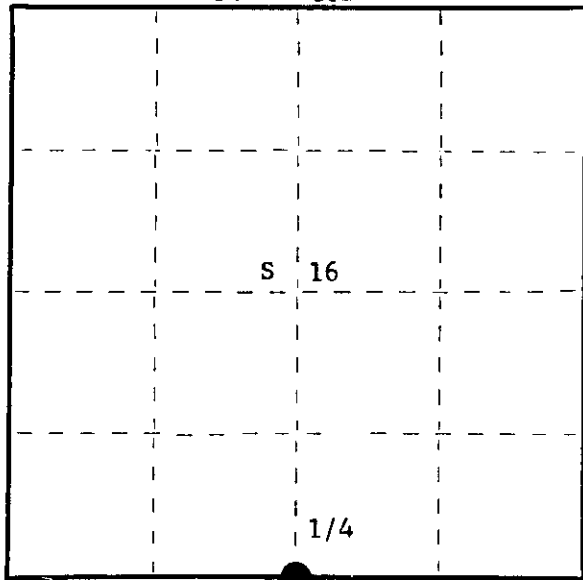
Jim Claflin

Herb Wagoner

I. McKay



T36N R10E



○ = Corner monument restored.

History of original corner establishment:

Original corner established by Wm. E. Dougherty, Deputy Surveyor, in 1863, from which black pine 10" bears N7°W 48 links and black pine 8" bears S41°E 51 links. Corner recovered by D.H. Vaughan, County Surveyor, in 1912. Recovered the original BT's. Set a new post. Corner recovered by H.C. Lawrence, Registered Land Surveyor, in 1948. Recovered stumps of original BT's. Set a new cedar post.

Description of corner evidence found:

Recovered H.C. Lawrence's 4" squared cedar post, in poor condition, scribed 1/4S S16, 1/4S S21.
Recovered original BT's- Black Pine 10" N7°W 48.0 links, now a snag still standing.
Black Pine 8" S41°E 51.0 links, now a stump, scribing visible.
Spruce pine 5" S7°E 11.5 links, now a stump, scribing visible.
Spruce pine 6" N7°E 14 links, now a stump, scribing visible.

Description of monument and accessories I established to perpetuate the original location of this corner.

Replaced H.C. Lawrence's wood post with 2 1/2" Berntsen A-1 Federal Monument (O.C.) - stamped: Monument projects 12" above ground.

Marked NBT's -

Jack Pine 6" S52°E 16.2 links
Jack Pine 6" S10°E 6.4 links
White Birch 5" S69°W 23.2 links
Jack Pine 7" N24°E 22.8 links
all scribed 1/4 BT

S498 - 1979
T36N R10E
1/4 S+16
S+20

Dated at Rhineland, Wis., this 27th day of July, 1979

Signature Philip T. Hansen, Title Registered Land Surveyor, Registration No. S-498
(County Surveyor, Registered Land Surveyor, or other duly authorized official)

Office of Register of Deeds, County of Oneida, I hereby certify that the within instrument was filed in this office for record on the 7th day of August, 1979 at 1:00 o'clock P. M.

Doris Ursula Kurian
(Register of Deeds)

By _____ Deputy

FORM 985
Wisconsin Department of Natural Resources

3610160026

ONEIDA COUNTY

COUNTY CORNER NO.: N-11

Monument Type: 2.50" BERNTSEN MONUMENT WITH STAMPED CAP

County Coordinate: N 151667.892 , E 305724.609

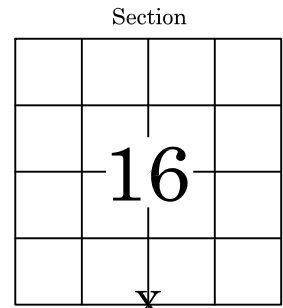
Date of Survey: 3/27/2024 Datum: NAD83(2011)

Survey Party: K. SCHUMACHER & D. MOE

Found Set Re-set Re-Tied

Section 16
Township 36 N
Range 10 E

TOWN OF PELICAN
City, Village, Town



Location (indicated by X)

BASIS FOR MONUMENT LOCATION:

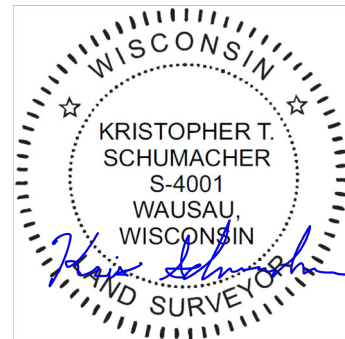
(Describe method of survey and corner authentication)

1863: PLS W.E.DOUGHERTY ESTABLISHED CORNER WITH 2 BEARING TREES.

1948: PLS H.C.LAWRENCE FOUND 2 BEARING TREES. ACCEPTED LOCATION AS CORRECT, SET NEW POST AND MARKED 2 NEW BEARING TREES.

1980: PLS #498 FOUND CORNER POST AND 4 BEARING TREES. ACCEPTED AS CORRECT, REPLACED CORNER POST WITH 2.50" BERNTSEN MONUMENT WITH STAMPED CAP AND RE-TIED CORNER.

2024: PLS 4001 FOUND 2.50" BERNTSEN MONUMENT WITH STAMPED CAP AT CORNER LOCATION AND 3 BEARING TREES. ACCEPTED CORNER LOCATION AS CORRECT, SET 4 NEW TIES AND RE-TIED CORNER.

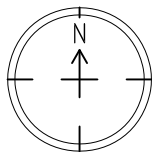


KRISTOPHER T. SCHUMACHER

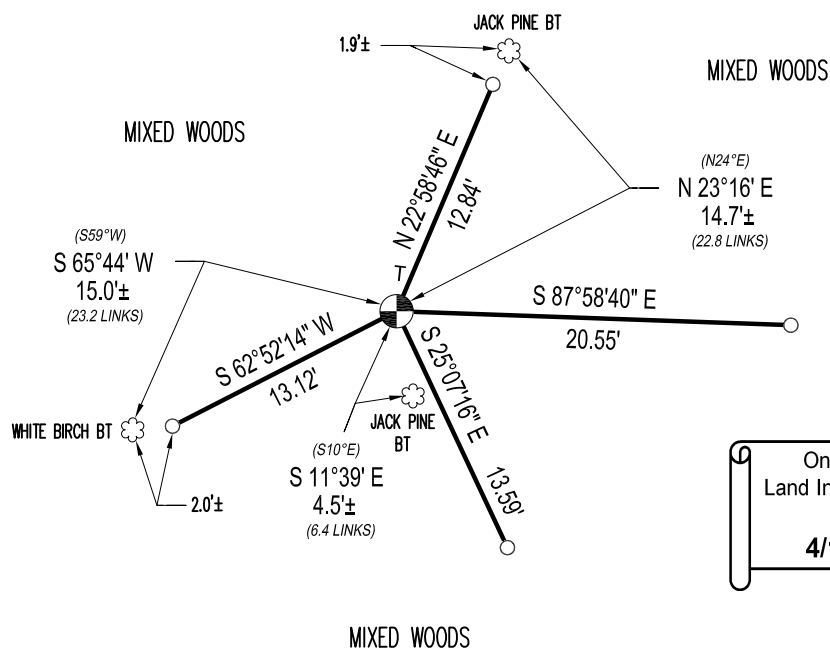
PLS-4001 Date: 3/30/2024

The U.S. Public Land Survey Monument Record is Correct and complete to the best of my knowledge and belief.

TIE SKETCH: Show minimum of four (4) horizontal tie distances to fixed witness monuments. Describe all monuments found or set.



Bearings are based on the Oneida County Coordinate System NAD83 (2011).



LEGEND

- SECTION/QUARTER CORNER
- 0.63" X 24" IRON BAR SET WEIGHING 1.04 LBS/LIN. FT.
- PVC T-POST

Oneida County
Land Information Office
Filed
4/11/2024

N-11