

U.S. PUBLIC LAND SURVEY MONUMENT RECORD
ONEIDA COUNTY

WI CORNER IDENTIFICATION NO.: 43610162000

Monument Type: 2.00" IRON PIPE WITH STAMPED CAP

COUNTY CORNER NO.: L-13

County Coordinate: N 154381.953 , E 308544.302

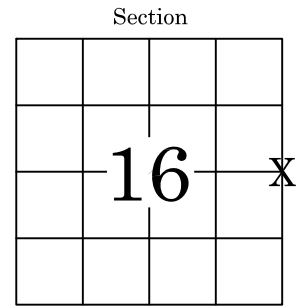
Date of Survey: 3/27/2024 Datum: NAD83(2011)

Survey Party: K. SCHUMACHER & D. MOE

Found Set Re-set Re-Tied

Section 16
 Township 36 N
 Range 10 E

TOWN OF PELICAN
 City, Village, Town

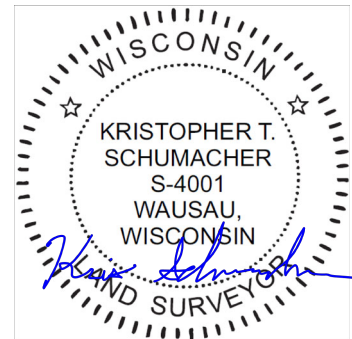


Location
 (indicated by X)

BASIS FOR MONUMENT LOCATION:

(Describe method of survey and corner authentication)

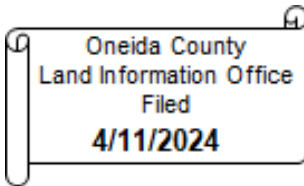
2024: PLS 4001 FOUND 2.00" IRON PIPE WITH STAMPED CAP AND 2 BEARING TREES. 2.00" IRON PIPE LOCATION IS APPROXIMATELY EQUIDISTANT AND ON LINE BETWEEN NE AND SE CORNERS OF SECTION 16. STAMPED CAP DATED 1987 BY PLS #1682. NO TIESHEET WAS FILED TO VERIFY BEARING TREES. ACCEPTED 2.00" IRON PIPE AS CORRECT CORNER LOCATION, SET 4 NEW TIES AND RE-TIED CORNER.



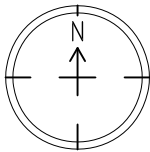
KRISTOPHER T. SCHUMACHER

PLS-4001 Date: 3/30/2024

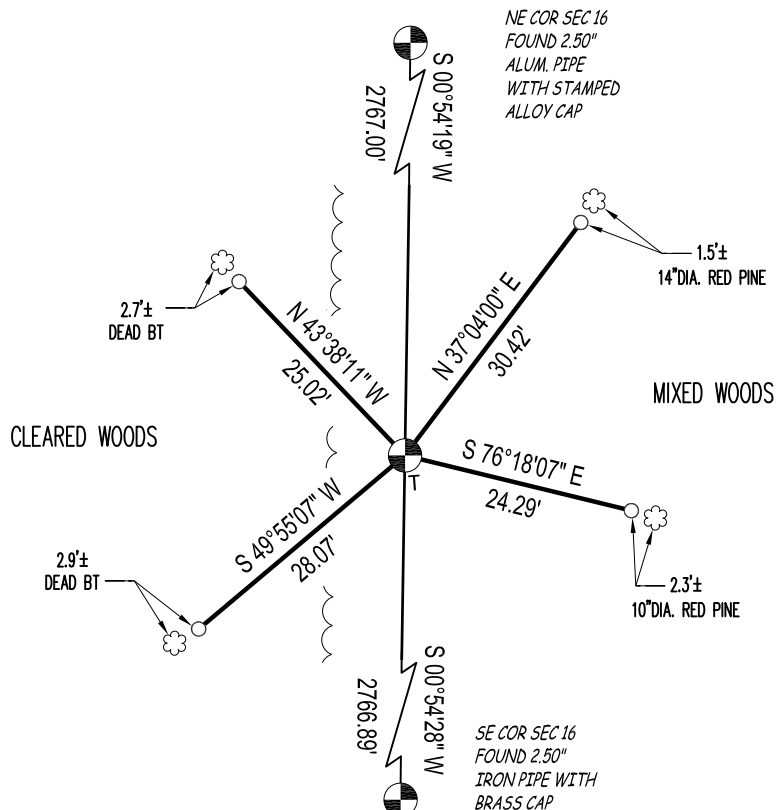
The U.S. Public Land Survey Monument Record is Correct and complete to the best of my knowledge and belief.



TIE SKETCH: Show minimum of four (4) horizontal tie distances to fixed witness monuments. Describe all monuments found or set.



Bearings are based on the Oneida County Coordinate System NAD83 (2011).



LEGEND

- SECTION/QUARTER CORNER
- 0.75" X 30" IRON BAR SET WEIGHING 1.50 LBS/LIN. FT.
- PVC T-POST

L-13