

U.S. PUBLIC LAND SURVEY MONUMENT RECORD
ONEIDA COUNTY

WI CORNER IDENTIFICATION NO.: 43610172000

Monument Type: 1.75" IRON PIPE WITH CAP

COUNTY CORNER NO.: L-9

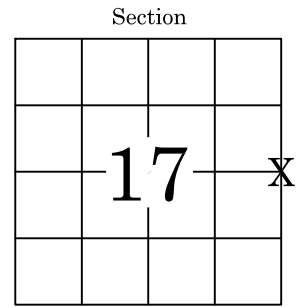
County Coordinate: N 154319.517 , E 303016.209

Date of Survey: 3/27/2024 Datum: NAD83(2011)

Survey Party: K. SCHUMACHER & D. MOE

Found Set Re-set Re-Tied

Section 17
 Township 36 N
 Range 10 E
TOWN OF PELICAN
 City, Village, Town



Location
(indicated by X)

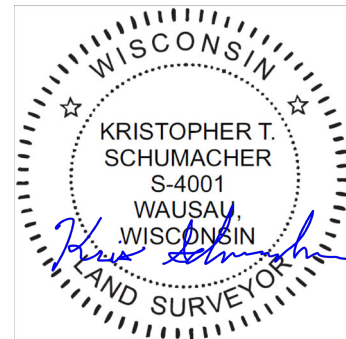
BASIS FOR MONUMENT LOCATION:

(Describe method of survey and corner authentication)

1967: NEPCO BOOK 1 ON PAGE 111 SHOWS IRON PIPE OR BRASS CAP EQUIDISTANT AND ON LINE BETWEEN NE & SE CORNERS OF SECTION 17.

1998: PLS #1682 FOUND 1.75" IRON PIPE WITH 2" CAP PER MAP B4034. SET 1.00" IRON PIPE WITH ALLOY CAP AT 1/16 CORNER EQUIDISTANT AND ON LINE BETWEEN E1/4 AND SE CORNER OF SECTION 17.

2024: PLS 4001 FOUND 1.75" IRON PIPE WITH CAP AT CORNER LOCATION AND NO TIES. DISTANCES TO 1/16 CORNER TO THE SOUTH AND SE CORNER OF SECTION 17 AGREED WITH CORNER LOCATION. ACCEPTED AS CORRECT, SET 4 NEW TIES AND RE-TIED CORNER.

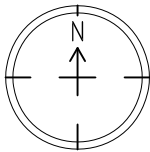


KRISTOPHER T. SCHUMACHER

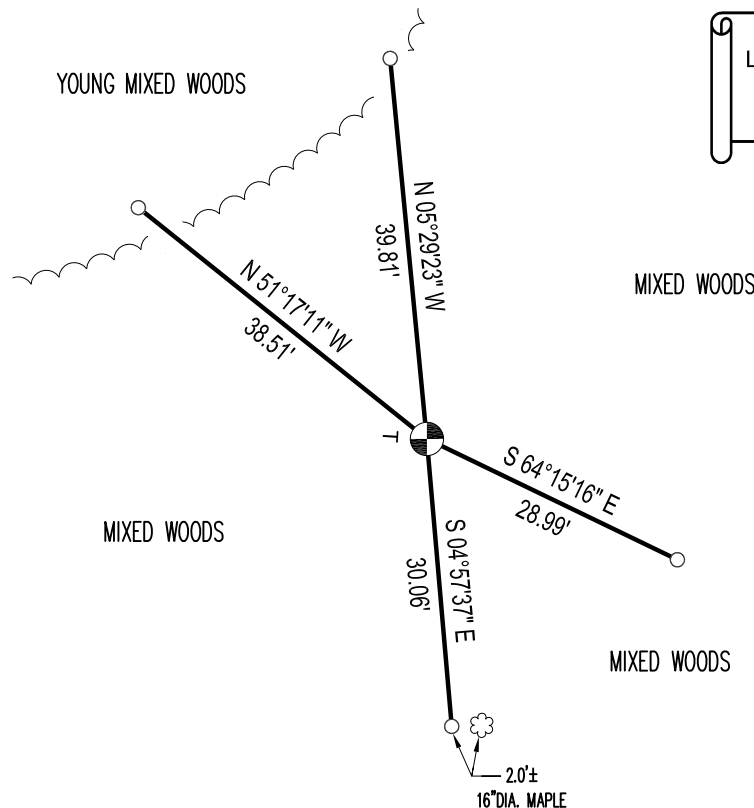
PLS-4001 Date: 3/30/2024

The U.S. Public Land Survey Monument Record is Correct and complete to the best of my knowledge and belief.

TIE SKETCH: Show minimum of four (4) horizontal tie distances to fixed witness monuments. Describe all monuments found or set.



Bearings are based on the Oneida County Coordinate System NAD83 (2011).



Oneida County
 Land Information Office
 Filed
4/11/2024

LEGEND

- SECTION/QUARTER CORNER
- 0.75" X 30" IRON BAR SET WEIGHING 1.50 LBS/LIN. FT.
- PVC T-POST

L-9