

JUN 08 2017

AT _____ O'CLOCK _____ M
KYLE J. FRANSON
REGISTER OF DEEDS

U.S. PUBLIC LAND SURVEY MONUMENT RECORD

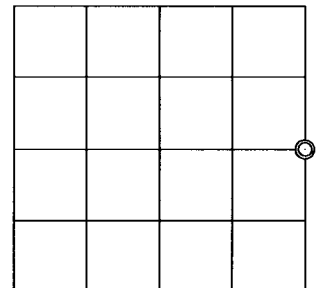
Note: This form is intended and designed to fulfill all requirements of the Wisconsin Administrative Code, Chapter A-E 7.08 U.S. Public Land Monument Record (3)(a)(b)(c)(d)(e)(f)(g)(h)(i). An additional sheet may be added if necessary to conform with said requirements.

(a) CORNER LOCATION: WISCRS - Oneida County
East Quarter Corner of Section 18
Township 36 North
Range 10 East
Town of Pelican
County of Oneida

North: 154421.846 USft
East: 297623.385 USft
Latitude: 45° 36' 33.37695" N
Longitude: 89° 16' 48.84020" W
Datum: NAD 83(2011)
GNSS Method: RTK - Direct
GNSS Control: WISCORS VRS
Record North: 154421.661 USft
Record East: 297623.468 USft
Record Datum: NAD 83(1991)

(RECORDING AREA)

SECTION 18



(b) HISTORY OF ORIGINAL CORNER ESTABLISHMENT

Original Surveyor: William E. Daugherty
Date of Survey: Commenced August 12, 1863
Completed August 20, 1863
Original B.T.'S: Aspen 7" S 49°E, 29 lks.
Birch 8" S 44°W 8 lks.

(f)(g)(h) DESCRIPTION OF MONUMENT FOUND AT THIS CORNER AND IF IT WAS ACCEPTED, STATE ALL EVIDENCE (MATERIAL, TESTIMONIAL, OCCUPATIONAL, PLATS, RECORD, OTHER MONUMENTS) USED AS A BASIS FOR ESTABLISHING LOCATION. IF NOT ACCEPTED OR IF NOTHING WAS FOUND, STATE EVIDENCE USED AS BASIS FOR ESTABLISHING LOCATION. IF REESTABLISHED THROUGH LOST CORNER PROPORTIONATE METHODS, INDICATE ALL MONUMENTS, DISTANCES AND DIRECTIONS USED TO ESTABLISH. INDICATE TYPE OF MONUMENT AND SIGN POST FOUND OR SET.

May 20, 1949 - Ivan Branham, surveyor (Branham Book 1, pages 5 and 6, survey in Section 18, T36N, R10E) ran a random west from 1/4 stake between Sections 17-18. Field notes state "Old stakes, not scribed No B.T."

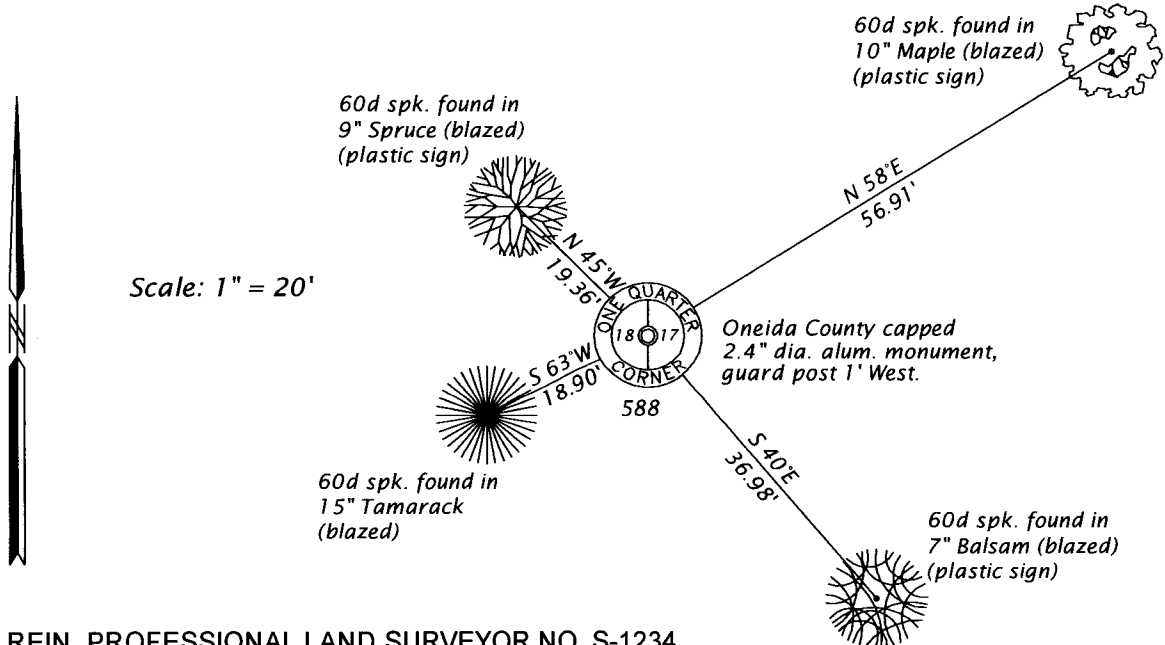
October 28 thru December 7, 1965 - Ivan Branham, RLS No. 236 (Branham Book 5, pages 55-57. survey in Section 18. T36N, R10E) measured north from S 1/16 Corner on east line 20.10 chains "came 0.21 W. of old 1/4 P. & BT as E 1/4, BT is old 5" Tam. broken off S40°W, 25 lks.±. Put in new 3" Tam. post.

March 16, 1971 - St Regis survey crew (RIPCO Book 4, pages 158-160, survey in Section 17, T36N, R10E), notes show running a random traverse from the E 1/4 corner, set by Nekoosa Edwards Paper Co., to the W 1/4 corner, set by others".

(CONTINUED ON REVERSE PAGE)

The coordinate value shown has been verified by at least one of the following methods: 1) comparison to a previously GPS determined published value; 2) the value is the average of two or more GPS observations at a markedly different time; 3) one or more distances were measured back to the GPS observed corner from temporary GPS observed offset locations.

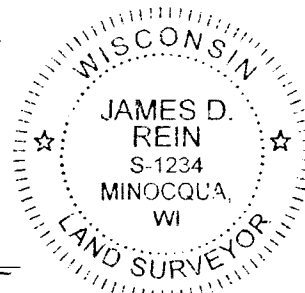
(c)(d)(e) PLAN VIEW OF CORNER WITH TIES TO AT LEAST 4 WITNESS MONUMENTS. IF IN DISAGREEMENT WITH PREVIOUSLY ESTABLISHED CORNER, SHOW THE DISTANCE BETWEEN THE TWO CORNERS AND ALSO INDICATE THE TIES TO THE DISPUTED CORNER.



(i) I, JAMES D. REIN, PROFESSIONAL LAND SURVEYOR NO. S-1234 HEREBY CERTIFY THAT THE CORNER LOCATION ON THIS RECORD WAS DETERMINED BY ME OR UNDER MY DIRECTION AND CONTROL AND THAT THIS U.S. PUBLIC LAND SURVEY MONUMENT RECORD IS CORRECT AND COMPLETE TO THE BEST OF MY KNOWLEDGE AND BELIEF.

James D. Rein

6-06-17
DATE



INDEX NO. L-5
3610182000

SIGNATURE

(CONTINUED FROM REVERSE PAGE)

May 1974 - Arvin M. Hess, RLS No. 666, map of survey, filed as L307 in county surveyor's office, for a survey in Section 17, T36N, R10E, legends this corner "IRON PIPE IN PLACE"

November 30, 1999 - Kevin P. Bixby, RLS No. 2343, Bixby Land Surveying, Inc., Dwg. No. 23, filed as C1626 in county surveyor's office for a survey in Sections 17 and 18, T36N, R10E, legends the corner "FOUND 1 1/2" IRON PIPE".

May 3, 2000 - Devon Vanden Heuvel, RLS No. 1795, Nicolet Surveying, Proj. # 121, filed as B4475 in county surveyor's office for a survey in Section 18, T36N, R10E, and later surveys filed as B5004, B5006, describe the corner monumented by a "1 1/2" IRON PIPE FOUND" and CSM's #2716 and 2720, describe it as a "2" IRON PIPE FOUND".

September 5, 2006 - Mathew E. Hoglund, RLS No. 1910, Nicolet Surveyors, Inc., drawing for Proj. 730, filed as C2332 in county surveyor' office legends this corner "2 - 1/2" Oneida County Aluminum Monument Found".

March 28, 2008 - Craig A. Keach, RLS No. 2333, Meridian Surveying, Inc., Job No: 5445-B289, filed as 2085A in county surveyor's office, legends this corner "COUNTY MONUMENT FOUND"

February 15, 2017 - Gregory S. Maines, PLS No. 2729, Maines & Associates, Land Surveyors, Job # 2016180, filed as C2913 in county surveyor's office describes this corner "1 1/2" iron pipe found"

May 18, 2017 - James D. Rein, PLS No. 1234, we recovered a 2" o.d. x 57" long iron pipe extending 14" above wetland bog. Although the site conditions for this corner do not correspond with the original GLO record, it has been accepted, as the true corner, for all surveys filed in Sections 17 and 18, thus I accept this pipe as the best available evidence of the original corner location and we replaced it with an Oneida County capped 2.4" dia. x 30" long aluminum monument, and made reference ties to existing bearing trees as shown in the plan.