

CERTIFIED LAND CORNER RESTORATION

Index No. **25**

State of Wisconsin

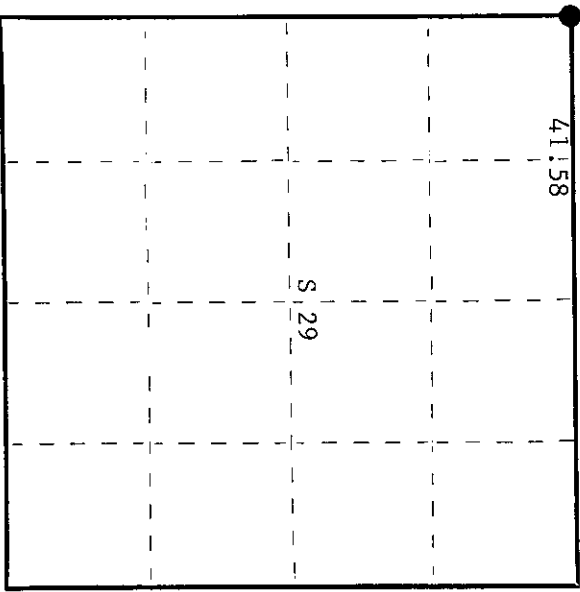
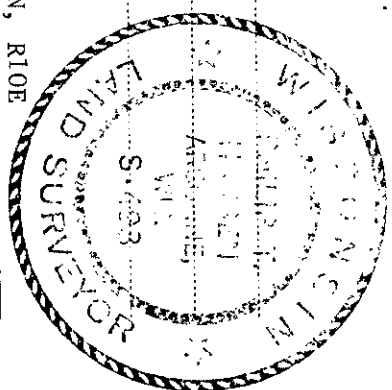
County of Oneida } ss.

I, Philip T. Hansen, do hereby certify that on the 8th day of September, 1975, I found evidence of the Section corner of S19, S20, S30, S29 Township 36 North, Range 10 East, Fourth Principal Meridian, as described hereon; and that from this evidence I established a new monument and accessories as described hereon to perpetuate the original location of this corner.

Resident witnesses.

Glen Barker

Jim Clafin



○ = Corner monument restored.

History of original corner establishment: Original corner established by Wm. E. Dougherty, Government Deputy Surveyor, in 1863 from which tamarack 8" bears S31°W, 8 links and yellow pine 10" bears S76°E, 77 links. Corner recovered by H.C. Lawrence, Registered Land Surveyor, in 1948. Found an old stake and stump of original yellow pine BT. Only the burned charred facing of the BT blaze and evidence of BT notch remained. Found stump of original tamarack BT S31°W, 8 links. Set new tamarack post and marked new BT Norway pine 16, S18°W, 83 links. Also the North vertical face of light gray boulder 5' high bears S5°W, 62 links.

Description of corner evidence found:
 Recovered 4" tamarack post, squared and scribed S19, S20, S29, S30, in poor condition.
 Also 3/4" x 18" iron pipe driven in beside it.
 Recovered - Original yellow pine 10" S76°E 77 links - now a decayed stump
 Norway pine 16" S18°W 83 links - now a cut-off stump

Description of monument and accessories I established to perpetuate the original location of this corner.
 Replaced 4" tamarack post with 2 1/2" iron pipe with brass cap stamped -

NBT's - W. oak 7"	S10°W	63.0 links	scribed SC BT	S19 S20
Tamarack 6"	N9°E	117.5 links	scribed SC BT	S30 S29

CPI-1975

Dated at Rhineland, Wis., this 19th day of September, 1975.

Signature Philip T. Hansen Title Registered Land Surveyor Registration No. S-498
 (County Surveyor, Registered Land Surveyor, or other duly authorized official)

Office of Register of Deeds, County of Oneida
 Instrument was filed in this office for record on the 17th day of November, 1975
 at 12:00 o'clock P. M.

Thomas George Fischer
 (Register of Deeds)

By: _____ Deputy

3610190000