

CERTIFIED LAND CORNER RESTORATION

Index No. **R 7**

State of Wisconsin

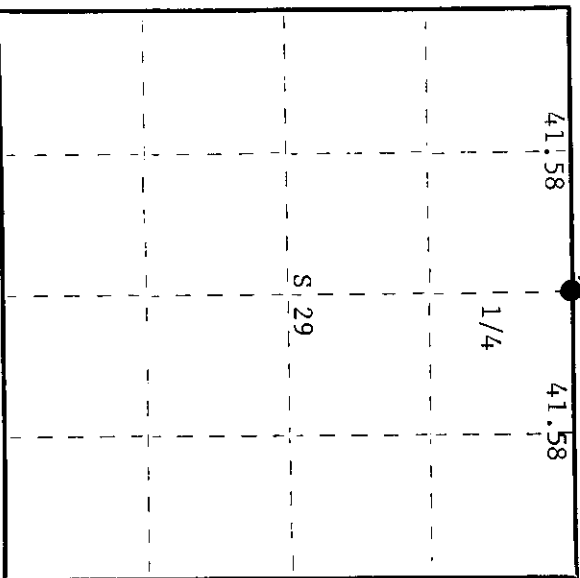
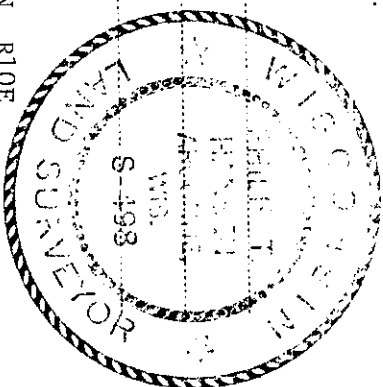
County of Oneida } ss.

I, Philip T. Hansen, do hereby certify that on the 8th day of September, 1975, I found evidence of the Quarter corner of Sections 20 and 29 Township 36 North, Range 10 East, Fourth Principal Meridian, as described hereon; and that from this evidence I established a new monument and accessories as described hereon to perpetuate the original location of this corner.

Resident witnesses:

Glen Barker

Jim Claflin



○ = Corner monument restored.

361020020

History of original corner establishment:

Original corner established by Wm. E. Dougherty, Government Deputy Surveyor, in 1863 from which aspen 6" bears S25°W, 21 links and aspen 6" bears N3°E, 45 links. This line was run and corner set by D.H. Vaughan, County Surveyor, in 1897 and by B.F. Dorr, County Surveyor, in 1903. They had a total length of 84.00 chains and 82.06, respectively. Line run by H.C. Lawrence in 1946. His measurement was 83.16 and, as the highway construction had destroyed all evidence of these corners, he set the 1/4 corner at 41.58 equidistant. Set wooden post. Top of white R.O.W. post bears N84°W, 26 1/2 links.

Description of corner evidence found:

Recovered 4" tamarack post, squared and scribed S20, 1/4-S S29, in very poor condition but point intact.
Recovered OBT white (yellow) R/W post N84°W (N79°W), 26.5 links, scribed BT.

Description of monument and accessories I established to perpetuate the original location of this corner.

Replaced tamarack post with 2 1/2" iron pipe with brass cap stamped - S498 T36N, R10E

NBT's - Jack pine 6" N30°E 44.5 links scribed 1/4 BT S 20
Jack pine 7" S70°W 76.5 links scribed 1/4 BT S 29

CPI-1975

Dated at Rhinelander, Wis., this 19th day of September, 1975

Signature: *Philip T. Hansen* Title: Registered Land Surveyor Registration No. S-498
(County Surveyor, Registered Land Surveyor, or other duly authorized official)

Office of Register of Deeds, County of Oneida
Instrument was filed in this office for record on the 17th day of November, 1975
at 10:00 o'clock A.M.

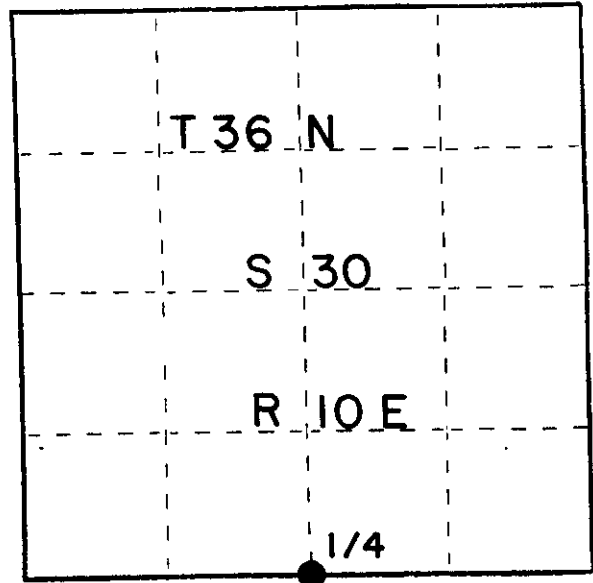
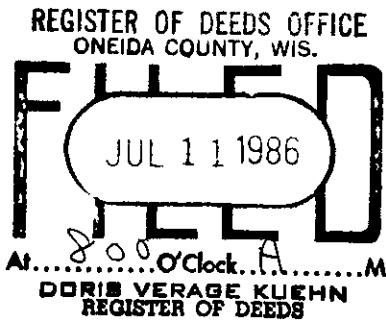
Signature: *Doris M. Kuchel*
(Register of Deeds)

By: Deputy

U. S. PUBLIC LAND SURVEY MONUMENT RECORD

INSTRUCTIONS: This record shall show the location of the corner and shall include all of the following nine elements (a through i).

- (a) Identify the corner by reference to the U.S. public land survey system.
 ○ = Corner monument restored.



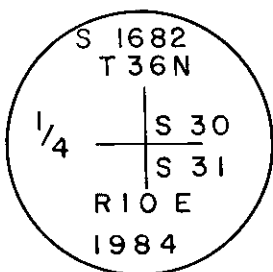
- (b) Describe any record evidence, monument evidence, occupational evidence, testimonial evidence or any other material evidence you considered, and whether the monument was found or placed.

Recovered old post point and H.C. Lawrence's 4" squared and scribed cedar post. Also recovered old BTs - Tamarack 5" N4°E 31.8', now a mound marked by H.C. Lawrence's B.T. stake. Tamarack 8" S34W 5.0', now a decaying stump, marked by H.C. Lawrence's B.T. stake.
 Lawrence recovered old post and BTs in 1947.

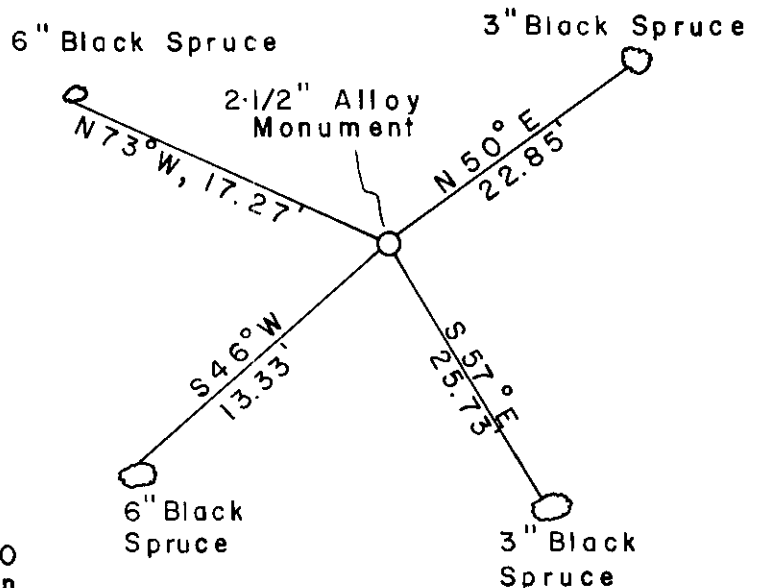
- (c) In the plan view drawing below, provide reference ties to at least 4 witness monuments, or, if the location is within a municipality, to at least 2 witness monuments. (Witness monuments shall be made of concrete, natural stone, iron or other equally durable material.)
 Describe witness monuments.

- (d) Show a plan view drawing depicting the relevant monuments and reference ties which is sufficient in detail to enable accurate relocation of the corner monument if the corner monument is disturbed. Indicate north.

Alloy Cap Stamped



NOTE:
 Bearing tree have No. 60 nail drove in root crown.
 Distance measured to nail.



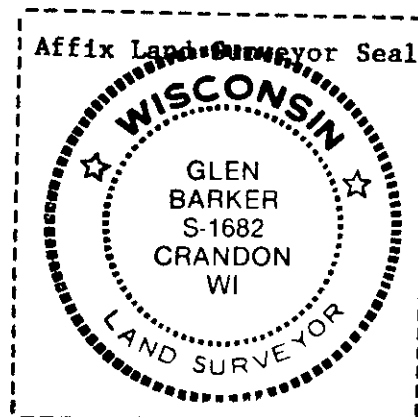
3610300020

(e) Describe any material discrepancy between the location of the corner as restored or reestablished and the location of that corner as previously restored or reestablished by distance and direction. Show the discrepancy on the plan view drawing under (d), above. Show the distances between the corner as previously restored or reestablished and (1) the corner as restored or reestablished, and (2) to at least 2 of the witness monuments shown on the drawing in (d), above.

(f) Was the corner restored through acceptance of (1) an obliterated evidence location, or, (2) a found perpetuated location?

Perpetuated location

(g&h) Was the corner reestablished through lost corner proportionate methods? If so, show the method, including the directions and distances to other public land survey corners used as evidence or used for proportioning in determining the corner location?



Glen Barker

(i) I, Glen Barker (type or print name) certify that the corner location shown on this record was determined by me or under my direction and control and that this U.S. Public Land Survey Monument Record is correct and complete to the best of my knowledge and belief.

Signature

Date

Glen Barker

8/10/84