

CERTIFIED LAND CORNER RESTORATION

Index No. R-11

State of Wisconsin }
County of Oneida } ss.

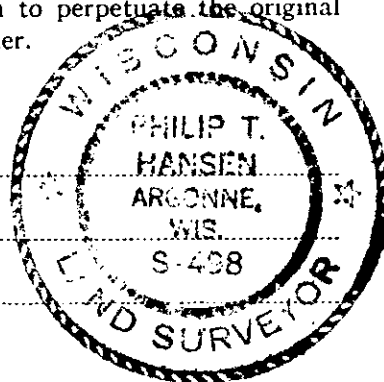
I, Philip T. Hansen, do hereby certify that on the 7th day of May, 1979, I ~~found~~ established the Quarter corner of Sections 21 and 28 Township 36, North, Range 10 East, Fourth Principal Meridian, as described hereon; and that from this evidence I established a new monument and accessories as described hereon to perpetuate the original location of this corner.

Resident witnesses:

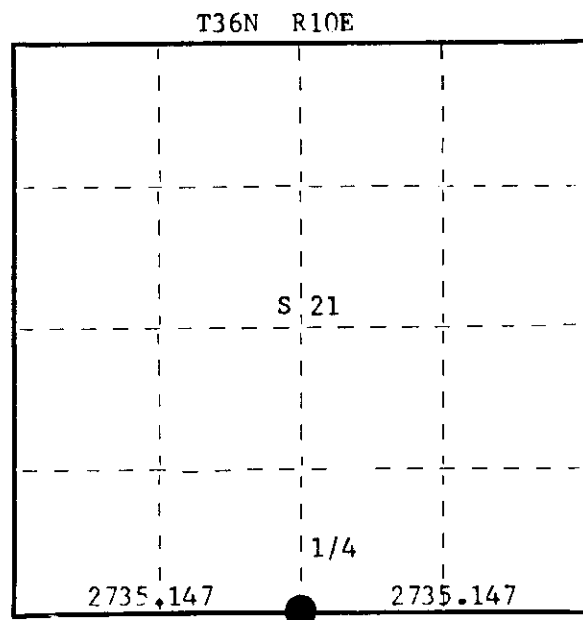
Glen Barker

Jim Claflin

Herb Wagoner



FORM 985
Wisconsin Planning & Surveying Co.
Madison, Wisconsin



○ = Corner monument restored.

History of original corner establishment: Original corner established by Wm. E. Dougherty, Deputy Surveyor, in 1863, from which white pine 10" bears N37°E 58 links and white pine 8" bears S2°W 41 links.

H.C. Lawrence, Registered Land Surveyor, ran the line between section 21 and 28 in 1948, could not find any trace of corners on this line and did not set any. No evidence of any records in the courthouse on that date.

Description of corner evidence found:

Corner established by traverse and computation. Ran a traverse from section corner 21, 22, 27 and 28 to section corner 20, 21, 22 and 29. Computed distance 5470.205 feet at bearing S 89° 55' 13" W. Set 1/4 corner at 2735.147' intermediate.

Description of monument and accessories I established to perpetuate the original location of this corner.

Drove a 1-1/2" x 18" iron pipe 5" below the surface on the south shoulder of old highway 8 for corner.

Set a 2-1/2" iron pipe with brass cap 30 feet south for witness monument.

Monument projects 24" above ground - cap stamped:

Marked NBT's -

Black Spruce 8" S40°E 72.40 feet, scribed 1/4 BT.

White Spruce 6" N22°W 37.12 feet, scribed 1/4 BT.

Black Spruce 7" N31°E 39.00 feet, scribed 1/4 ET.

S498
T36N R10E
1/4 S+21
S+28
N 30 ft.

Dated at Rhineland, Wis. this 14th day of May, 1979

Signature Philip T. Hansen Title Registered Land Surveyor Registration No. S-498
(County Surveyor, Registered Land Surveyor, or other duly authorized official)

Office of Register of Deeds, County of Oneida, I hereby certify that the within instrument was filed in this office for record on the 21st day of May, 1979 at 2:00 o'clock P. M.

Doris Verage Kuehn
(Register of Deeds)

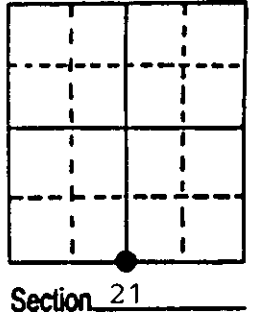
By _____ Deputy

3610210020

U.S. PUBLIC LAND SURVEY MONUMENT RECORD

Note: This form is intended and designed to fulfill all requirements of Wisconsin Administrative Code, Chapter A-E 7.08 U.S. Public Land Survey Monument Record (3) (a) (b) (c) (d) (e) (f) (g) (h) (i). An additional sheet may be added if necessary to conform with said requirements.

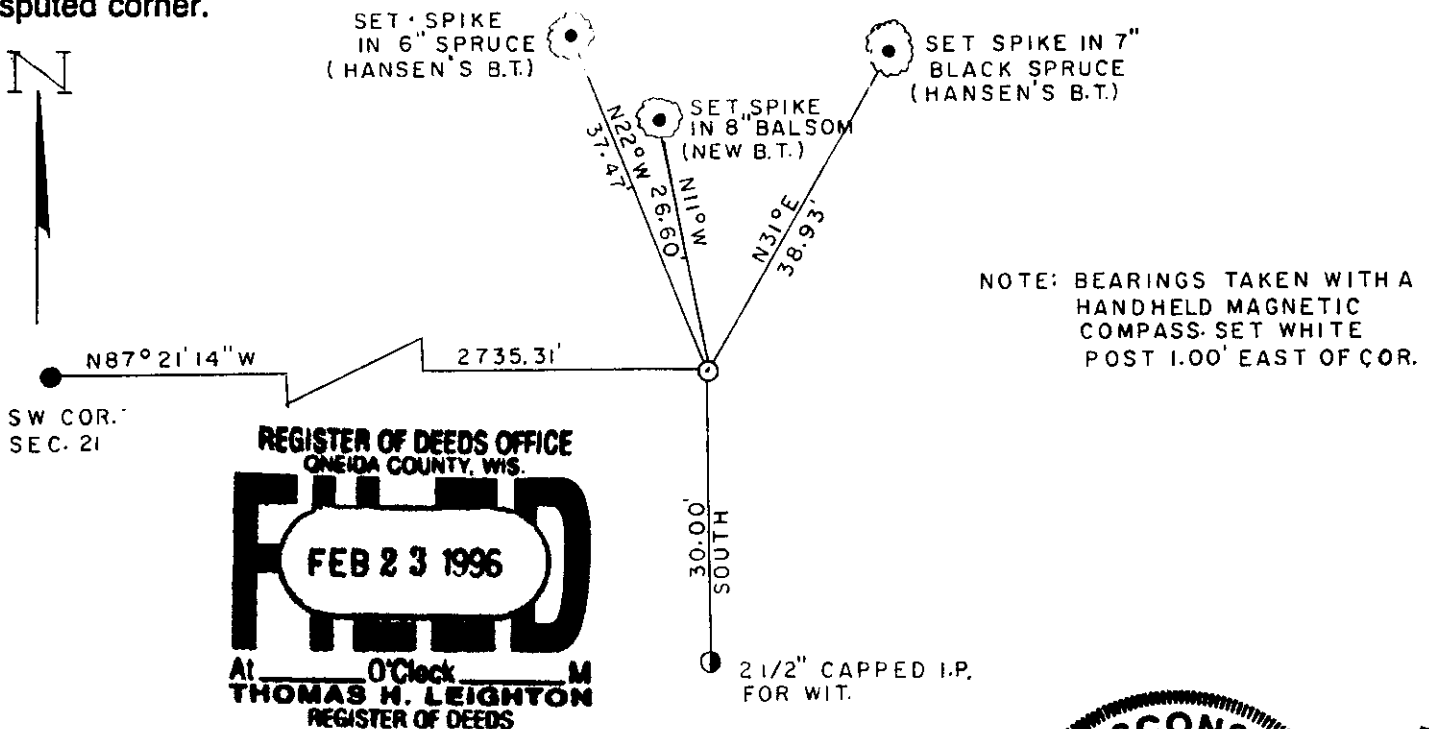
(a) Corner location: Township 36 North
 Range 10 East ~~Wisk~~
 Town/City/Village PELICAN
 County ONEIDA



(b) (f) (g) (h) Description of monument found at this corner and if it was accepted, state all evidence (material, testimonial, occupational, plats, records, other monuments) used as a basis for accepting. If not accepted or if nothing was found, state evidence used as basis for establishing location. If reestablished through lost corner proportionate methods, indicate all monuments, distances and directions used to establish. Indicate type of monument found or set and sign post.

- 1863 - William E. Dougherty set wood post and made the following B.T.'s: white pine 10" N37°E 58 links, white pine 8" S2°W 41 links.
- 1979 - Phillip Hansen set 1 1/2" x 18" iron pipe on south shoulder of Old Hwy. '8' for S 1/4. Made the following B.T.'s: 8" black spruce S40°E 72.49', 6" white spruce N22°W 37.12', 7" black spruce N31°E 39.00'. Also set a 2 1/2" iron pipe with brass cap 30' south for witness monument.
- -- - Glenn Barker indicates finding a 2 1/2" iron pipe with brass cap.
- 1995 - William E. Badow set Oneida County monument for south 1/4 corner and witnessed as shown below.

(c) (d) (e) Plan view of corner with ties to at least 4 witness monuments. If in disagreement with previously established corner, show the distances between the two corners and also indicate the ties to the disputed corner.



(i) I, William E. Badow
 (type or print name) certify that the corner location on this record was determined by me or under my direction and control and that this U.S. Public Land Survey Monument Record is correct and complete to the best of my knowledge and belief.

William E. Badow 2-23-96
 Signature Date



Stamp

3610210020

Index No. R-11

