

CERTIFIED LAND CORNER RESTORATION

Index No. R-15

State of Wisconsin }  
County of Oneida } ss.

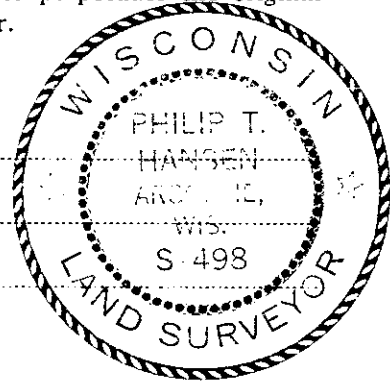
I Philip T. Hansen, do hereby certify that on the 19th day of May, 1976, I found evidence of the Quarter corner of Section 22 and 27 Township 36, North, Range 10 East, Fourth Principal Meridian, as described hereon; and that from this evidence I established a new monument and accessories as described hereon to perpetuate the original location of this corner.

Resident witnesses:

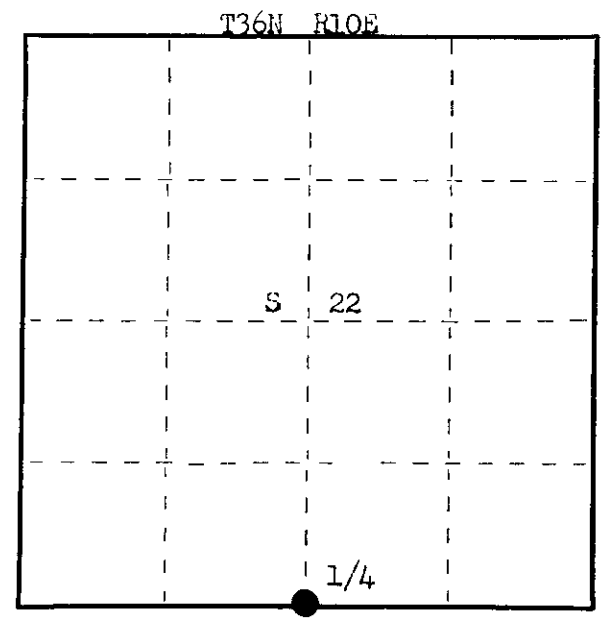
Glen Barker

Jim Claflin

Herb Wagoner



FORM 965 H. C. MILLER CO., MILWAUKEE



○ = Corner monument restored.

History of original corner establishment: Original Corner established by Wm. L. Dougherty, Deputy Surveyor, in 1863, from which Fir 8" bears S 37° W 23 lks and Birch 8" bears N 56° W 14 lks.

Corner recovered in 1910 by D.H. Vaughan, County surveyor, recovered original BTs.

Corner recovered by H.C. Lawrence, Registered Land Surveyor, in 1947. Found Vaughan's old post. Set new post and marked NBT - Spruce 16" S 5° W 62½ lks, telephone pole 1461 is 2 chains north.

Description of corner evidence found:

Recovered 4" squared cedar post, scribed S22 1/4 S27 with large rock cairn built up around base. Post was in poor condition.

Recovered NBT - Spruce 16" S 5° W 62.5 lks, scribed 1/4 S27 BT, now a 10' stub.

The telephone line has been removed.

Description of monument and accessories I established to perpetuate the original location of this corner.

Replaced cedar post with 2½" Aluminum pipe with cap (Berntsen A-1 Federal Monument), projecting 24" above ground. Cap stamped.

Replaced rock cairn around base of monument.

NBT - Black Spruce 10" N 20° W 119.3 lks, scribed 1/4 BT.

W. Spruce 6" N 18° E 119 lks, scribed 1/4 BT.

Corner sets on the north edge of wet tag alder swamp.

Monument and BTs painted blue.

S498  
T36N R10E  
1/4 S 22  
S 27  
1976

Dated at Rhineland, Wis., this 4th day of August, 1976.

Signature Philip T. Hansen Title Registered Land Surveyor Registration No. S-498  
(County Surveyor, Registered Land Surveyor, or other duly authorized official)

Office of Register of Deeds, County of Oneida, I hereby certify that the within instrument was filed in this office for record on the 22nd day of September, 1976 at 1:00 o'clock P. M.

Doris Verage Kuehn  
(Register of Deeds)

By \_\_\_\_\_ Deputy

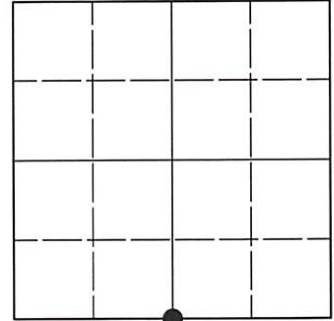
3610220020

# U.S. PUBLIC LAND SURVEY MONUMENT RECORD

Note: This form is intended and designed to fulfill all requirements of Wisconsin Administrative Code, Chapter A-E 7.08 U.S. Public Land Survey Monument Record (3)(a-i).

(a) CORNER LOCATION  
 1/4 Cor. of Secs. 22 & 27  
 Township 36 North  
 Range 10 East of the 4th P.M.  
 Town of Monico  
 County of Oneida

WISCRS - Oneida County  
 N: 146,371.24 USft  
 E: 311,061.33 USft  
 Datum: NAD 83(2011) ep. 2010.00  
 GNSS Method: RTN - Direct  
 GNSS Control: WISCORS VRS



Sec. 22, T. 36 N., R. 10 E.

(b)(f)(g)(h) Description of monument found at this corner and if it was accepted, state all evidence (material, testimonial, occupational, plats, records, other monuments) used as a basis for accepting. If not accepted or if nothing was found, state evidence used as basis for establishing location. If re-established through lost corner proportionate methods, indicate all monuments, distances and directions used to establish. Indicate type of monument and sign post found or set.

*This record is a perpetuation of the following land corner document(s):*

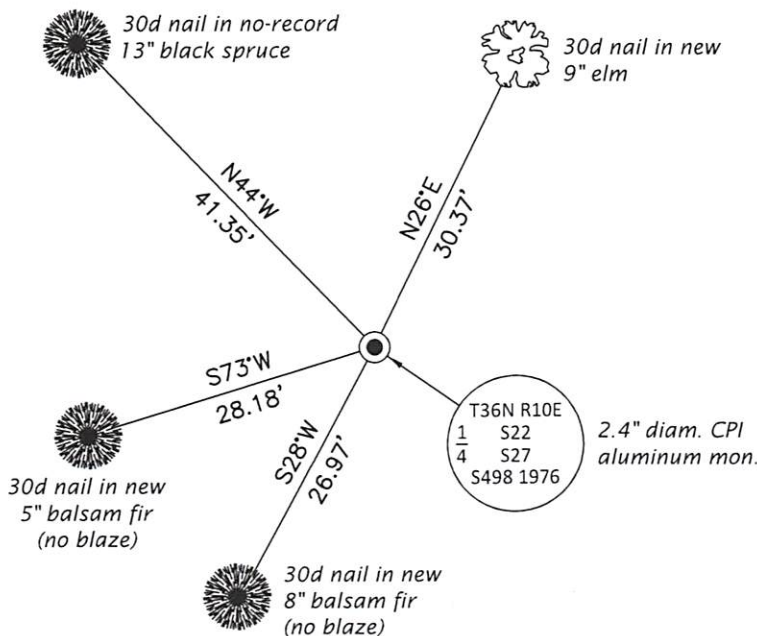
*Aug. 4, 1976: Certified Land Corner Restoration by Philip T. Hansen, filed in Oneida County*

*A complete history of the corner can be found on the previous land corner document(s). I accept the record activity as a true and faithful perpetuation or reestablishment of the original corner location and further perpetuate it as described below.*

*May 8, 2021: I found and accepted the record monument, a 2.4" diam. aluminum pipe, firmly set, with a 3.3" diam. CPI aluminum cap projecting 18" above a collar of stone. The CPI record bearing trees are gone. I found or established accessories as shown below. I set a white vinyl sign post bearing Northeast, 1.7 ft.*

*The coordinate value shown has been verified by at least one of the following methods: 1) comparison to a previously GNSS determined published value; 2) the value is the average of two or more GNSS observations at a markedly different time; 3) one or more distances were measured back to the GNSS observed corner from temporary GNSS observed offset locations.*

(c)(d)(e) Plan view of corner with ties to at least 4 witness monuments. If in disagreement with previously established corner, show the distances between the two corners and also indicate the ties to the disputed.



REGISTER OF DEEDS OFFICE  
 ONEIDA COUNTY  
 FILED

JUN 23 2021

KYLE J. FRANSON  
 REGISTER OF DEEDS

(i) I, Jeffrey W. Austin, Professional Land Surveyor No. S-1885, hereby certify that the corner location on this record was determined by me or under my direction and control and that this U.S. Public Land Survey Monument Record is correct and complete to the best of my knowledge and belief.

\_\_\_\_\_  
 Signature

MAY 20, 2021  
 \_\_\_\_\_  
 Date