

CERTIFIED LAND CORNER RESTORATION

Index No. **Q-24**

State of Wisconsin

County of Oneida } ss.

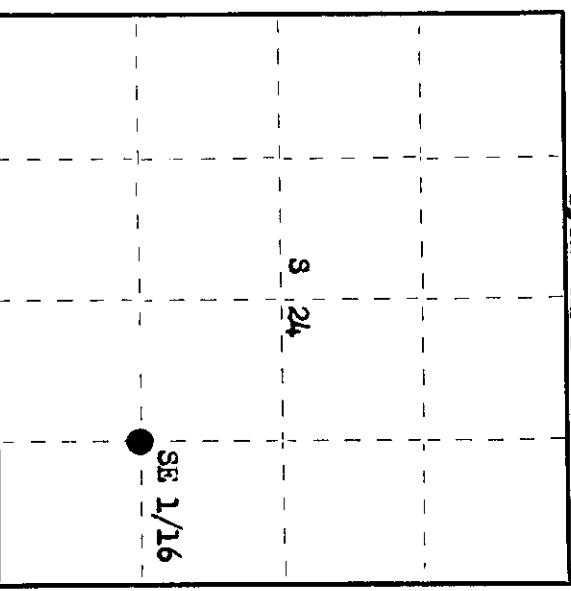
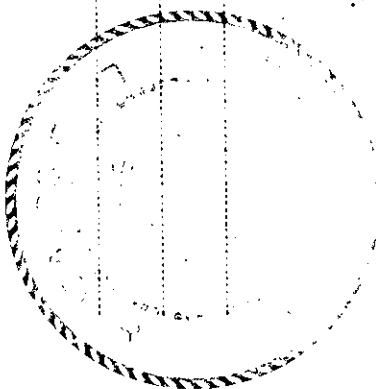
I, Phillip T. Hansen, do hereby certify that on the 3rd day of January, 1977, I found evidence of the SE 1/16 corner of Section 24 36 Township 10 East, North, Range 36, Fourth Principal Meridian,

as described hereon; and that from this evidence I established a new monument and accessories as described hereon to perpetuate the original location of this corner.

Resident witnesses:

Glen Barker

Jim Clafin



○ = Corner monument restored.

History of original corner establishment:

Corner established by D.H. Vaughan, County Surveyor, in 1910. Set post and marked BTs - Black Ash 12" S 87° E 33 links. Corner recovered by H.C. Lawrence, Registered Land Surveyor, in 1947. Found Vaughan's old post and Black Ash BT. Set new post and marked NBTs - Yellow Birch 12" N 44° W 28 1/2 links, Black Ash 10" S 45° E 26 links.

Description of corner evidence found:

Recovered Lawrence's 4" cedar post, squared and scribed SE 1/16 S24 SE 1/16 in poor condition. Also recovered a piece of Vaughan's old post laying beside it. Recovered OBT - Black Ash 10" S 45° E 26 links, now down and dead, scribing NBT visible. Yellow Birch 12" N 44° W 28.5 links, now dead and decayed.

Description of monument and accessories I established to perpetuate the original location of this corner.

Replaced 4" cedar post with 1 1/2" iron pipe with 2" brass cap. Cap stamped: S498
Monument projects 12" above ground. T36N R10E
NBTs - Black Ash 8" N 28° W 52.4 links, scribed 1/16 BT. SE 1/16 S 24
Black Ash 8" N 68° E 18.7 links, scribed 1/16 BT. CPI-1977

Dated at Rhineland, Wis., this 19th day of January, 1977.

Signature Phillip T. Hansen Title Registered Land Surveyor Registration No. S-498
(County Surveyor, Registered Land Surveyor, or other duly authorized official)

Office of Registrar of Deeds, County of Oneida, I hereby certify that the within instrument was filed in this office for record on the 24th day of February, 1977 at 1:00 o'clock P. M.

Doris Verage Fuch
(Registrar of Deeds)

By _____ Deputy

3610241010