

CERTIFIED LAND CORNER RESTORATION

Index No. *PC 1/2*

State of Wisconsin }  
County of Oneida } ss.

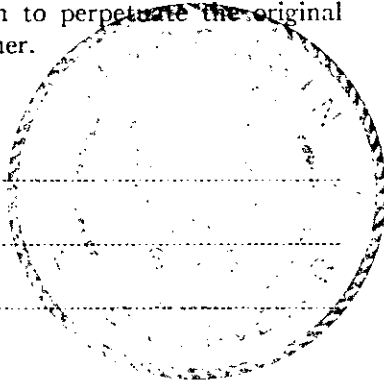
I Philip T. Hansen, do hereby certify that on the 10th day of December, 1976, I found evidence of the M.C. - NW Cor. Gov. Lot 4 corner of Section 19 Township 36, North, Range 11 East, Fourth Principal Meridian, as described hereon; and that from this evidence I established a new monument and accessories as described hereon to perpetuate the original location of this corner.

Resident witnesses.

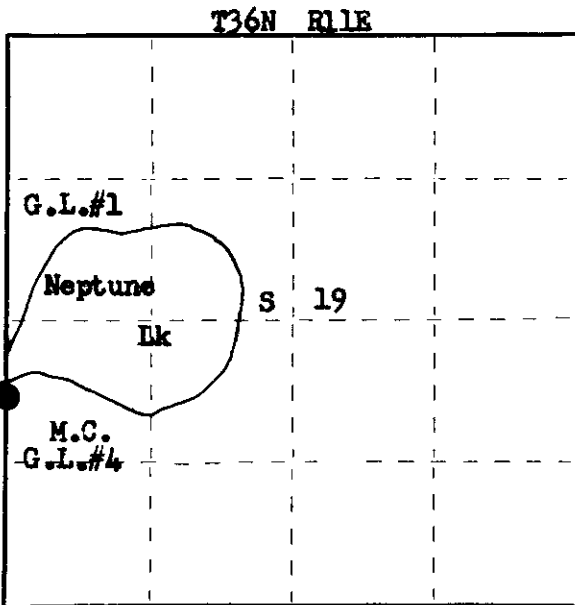
Glen Barker

Jim Claflin

Herb Wagoner



FORM 985 H. C. MILLEN CO., MILWAUKEE



○ = Corner monument restored.

History of original corner establishment:

Original corner established by Hiram C. Fellows in 1859 from which Cedar 8" bears S 30° W 10 links and Cedar 8" bears S 77° W 18 links.  
Corner re-established by D.H. Vaughan, County Surveyor, in 1900.  
Corner recovered by H.C. Lawrence, Registered Land Surveyor. Set new post. No mention made of BTs established.

Description of corner evidence found:

Recovered old point of Vaughan's original corner intact in mud. Recovered Lawrence's 3" cedar post, squared and scribed S19, MC Sec. 24.  
Also recovered a 2 1/2" iron pipe with brass cap (not stamped) setting beside it.  
Recovered OBT - Cedar 10" stub 5' high due east 6.5 links, scribed T36N R11E S19.

Description of monument and accessories I established to perpetuate the original location of this corner.

Replaced Lawrence's post with 2 1/2" iron pipe with brass cap set in hole of old point set by Vaughan. Cap stamped:  
Monument projects 2' above ground.  
Corner sets 1.5 chains south of Bug Lake (Neptune Lake).  
NBTs - Cedar 6" N 36° W 59 links  
Black Ash 10" N 89° W 68 links, both scribed M.C. BT.

		S498	
		T36N	
R			R
10	M.C.	24 19	11
E			E
		Gov. Lot 4	
		CPI - 1976	

Dated at Rhineland, Wis., this 15th day of December, 1976.

Signature Philip T. Hansen Title Registered Land Surveyor Registration No. S-498  
(County Surveyor, Registered Land Surveyor, or other duly authorized official)

Office of Register of Deeds, County of Oneida, I hereby certify that the within instrument was filed in this office for record on the 7<sup>th</sup> day of February, 1977 at 1:45 o'clock P. M.

Loris Verage Kuehn  
(Register of Deeds)

By Joseph M. Boomer Deputy

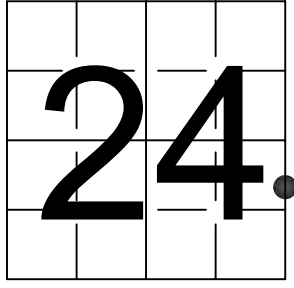
0094241600

# U S PUBLIC LAND SURVEY MONUMENT RECORD

NOTE: This form is intended and designed to fulfill all requirements of Wisconsin Administrative Code, Chapter A-E 7.08 U.S. Public Land Survey Monument Record (3) (a-i)

A-E 7.08(3)(a) Identity of corner:  
MEANDER CORNER EAST LINE OF  
SECTION 24, TOWNSHIP 36 NORTH,  
RANGE 10 EAST OF THE 4TH PM,  
TOWN OF MONICO, COUNTY OF ONEIDA

WISCORS - ONEIDA COUNTY  
N: 146,714.748 USft (XXX,XXX.XXX)  
E: 323,360.391 USft (XXX,XXX.XXX)  
Datum: NAD83 (2011)  
GNSS Method RTK  
GNSS Control WISCORS VRS



The coordinate value shown has been verified by the average of two or more GPS observations at a markedly different time. Coordinates shown in parenthesis are previously published values.

A-E 7.08(3)(b)

Original Surveyor: Hiram C. Fellows - June - July 1859

Original Accessories:  
Cedar 8 S 30° E 12 Links  
Cedar 8 S 77° W 18 Links

See previous Certified Land Corner Restoration - P-Q 1 1/2 - December 15, 1976 - Surveyor 498 - Philip T. Hansen - THENCE:

June 5, 1990 - Surveyor 1523 - Todd J. Loftus - indicates this position as "subdivisional mon of record" on Oneida County Map #C769.

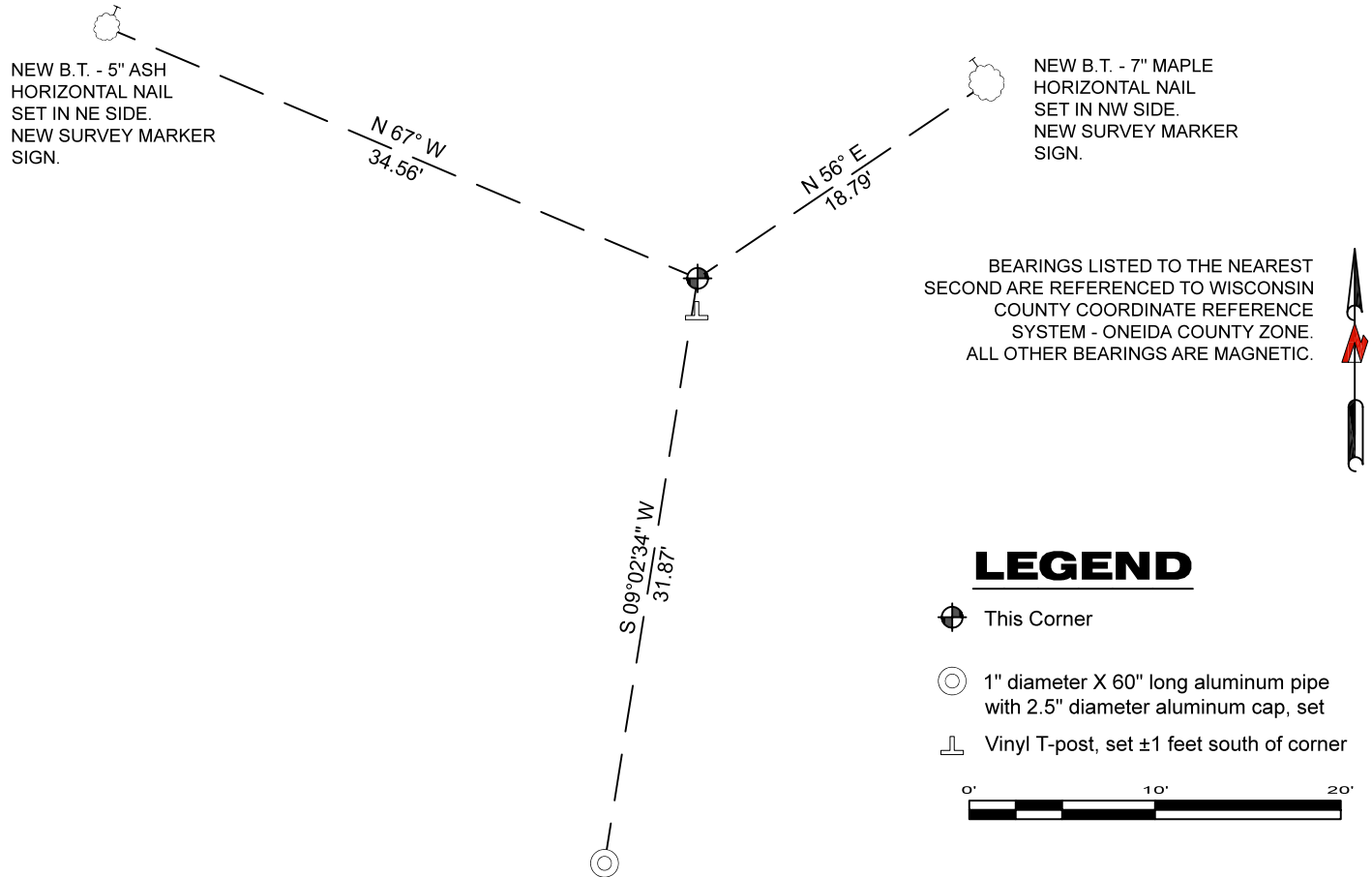
April 1995 - Surveyor 1248 - Russell F. Brown - indicates this position as "found 2" iron pipe" on Oneida County Map #C1138 & C1143.

April 16, 1998 - Surveyor 1182 - William E. Bandow - indicates this position as "found 2" capped iron pipe" on Oneida County Map #C1453.

November 12, 1998 - Surveyor 1248 - Russell F. Brown - indicates this position as "found 2" iron pipe" on Oneida County Map #B4054.

October 24, 2023 - I found a 2.5" diameter iron pipe, with a 2.5" diameter brass cap stamped to identify the corner location, laying down in a tamarack swamp. I reset the monument straight. The monument extends ±18" above grade. I did not find any previous witnesses, but I did find the points of 2 cedar posts (3" and 6") as well as a picket point. All were buried in the mud at the base of the monument. I established 3 new bearing trees as shown below (no other suitable trees in area).

A-E 7.08(3)(c)(d) Plan view of corner with references to at least 4 witness monuments.



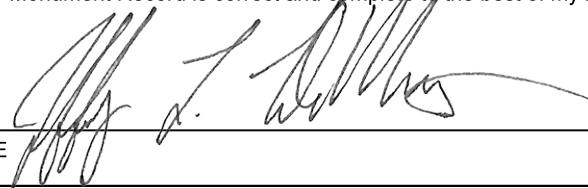
A-E 7.08(3)(e) 1976 Surveyor set a 2.5" iron pipe with a stamped brass cap. Subsequent surveyors found the same, as did I in 2023.

A-E 7.08(3)(f) I accept this monument as a FOUND PERPETUATED LOCATION of the corner.

A-E 7.08(3)(g)(h) This corner was not determined through lost-corner-proportionate methods.

A-E 7.08(3)(i) I, Jeffrey L. DeMuth, Professional Land Surveyor No. S-2656, hereby certify that the corner location on this record was determined by me or under my direction and control, and that this U.S. Public Land Survey Monument Record is correct and complete to the best of my knowledge, and belief.



SIGNATURE  DATE October 27, 2023