

CERTIFIED LAND CORNER RESTORATION

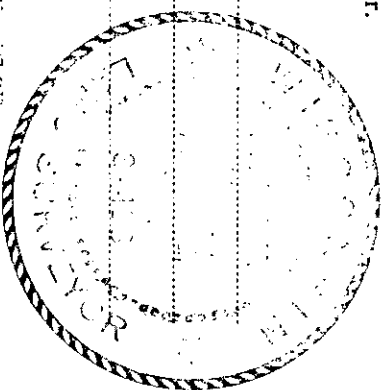
Index No. V-22

State of Wisconsin }  
 County of Oneida } ss.

I, Philip T. Hansen, do hereby certify that on the 19th day of July, 1976, I found evidence of the N 1/16 corner of section 25-36 Township 36 East, Range 10 East, Fourth Principal Meridian, as described hereon; and that from this evidence I established a new monument and accessories as described hereon to perpetuate the original location of this corner.

Resident witnesses:

Jim Clarlin  
 Herb Magner

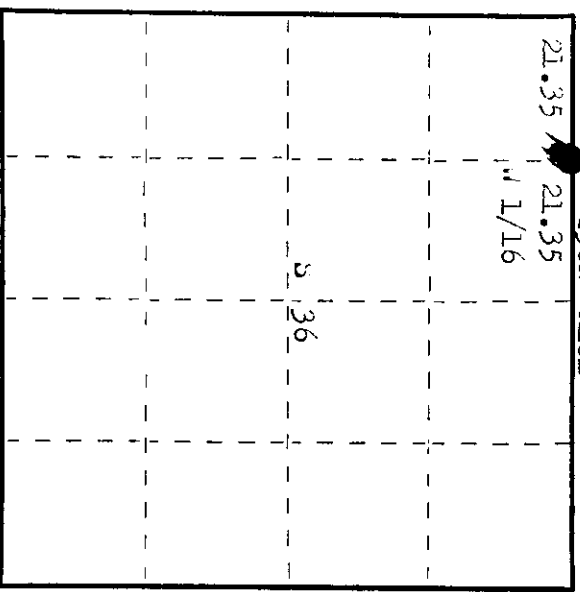


History of original corner establishment: Corner set by H.C. Lawrence, registered land surveyor, in 1950 by proportionate measurement. From recovered and restored sec. corner 25, 20, 25-30 he ran random line east (S 89° 30' E mag.) 42.70 chains, closed out 4 lks north of 1/4 corner. Set N 1/16 corner at 2 lks south of 21.35 chains intermediate.  
 Marked UBTS - Tamarack 9" N 79 1/2° " 115 1/2 lks, white pine 12" S 84 1/2° " 102 lks.

Description of corner evidence found:  
 Recovered 4" tamarack post, squared and scribed N 1/16 S 25, 30 laying down in very poor condition. From cross ties, recovered hole of old corner.  
 Recovered UBTS - white pine 12" (18") S 84° " 102.0 lks, scribings grown over.  
 Tamarack 9" N 79° " 115.5 lks.

Description of monument and accessories I established to perpetuate the original location of this corner.  
 Replaced post with 1 1/2" iron pipe with 2" brass cap stamped.  
 Monument projects 20" above ground.  
 UBTS - white line 8" N 10° S 45.4 lks, scribed 1/16 BT.  
 Monument and BTs painted blue.

0498  
 T36N R10E  
 S 1/16 S 25  
 30  
 GPI-1976



O = Corner monument restored.

Dated at Oneida, Wis. this 19th day of August, 1976.

Signature: Philip T. Hansen Title: Registered Land Surveyor Registration No. 0498  
 County Surveyor, Registered Land Surveyor, or other duly authorized official

Office of Register of Deeds, County of Oneida. I hereby certify that the within instrument was filed in this office for record on the 23rd day of September, 1976 at 10:00 o'clock A.M.

Doree Verage Tucker  
 (Register of Deeds)

By: \_\_\_\_\_ Deputy

3610250030