

CERTIFIED LAND CORNER RESTORATION

Index No. U-25

State of Wisconsin

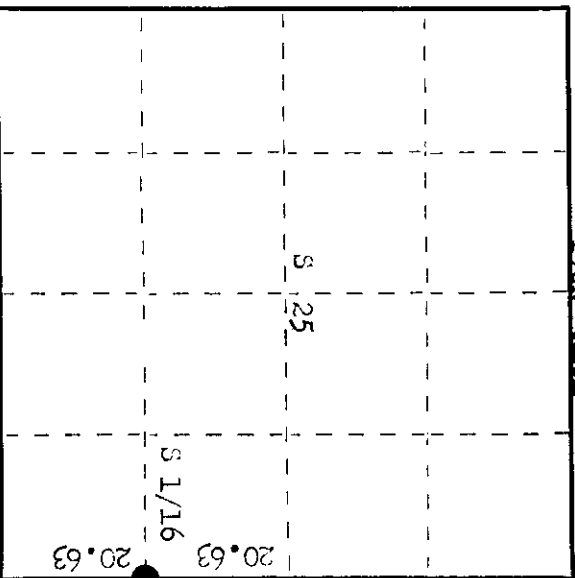
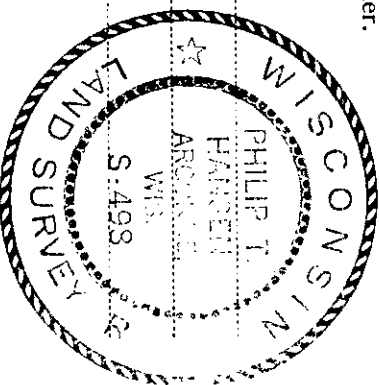
County of Oneida } ss.

I Phillip T. Hansen, do hereby certify that on the 3th day of July, 1976, I found evidence of the 3 1/16 corner of sec. 25 and 30 Township 36 North, Range 10 & 11 east, Fourth Principal Meridian, as described hereon; and that from this evidence I established a new monument and accessories as described hereon to perpetuate the original location of this corner.

Resident witnesses:

Jim Clafflin

Herb Hagoner



○ = Corner monument restored.

History of original corner establishment: Original Corner established by D.H. Vaughan, County Surveyor, in 1905. Set wood post and marked BFs - "Birch 10" N 18° W 34 lks and "Birch 12" S 32° E 24 lks. Corner recovered by H.C. Lawrence, registered Land Surveyor, in 1950. Found remains of old post in fence line, found remains of stumps of BFs. angle and distance to BFs intersected in fence line between two fence posts one ft. apart. Set new post in fence line beside posts, marked NBFs - Hemlock 9" N 68° W 48 1/2 lks and White Pine 12" S 20° E 110 lks.

Description of corner evidence found:

recovered 4" cedar post, squared and scribed S 1/16, S 25, R10E S 1/16, S30, R11E. Also a 5" squared cedar post beside it scribed 1/8 S. recovered OBF - Hemlock 9" (14") N 68° E 48.5 lks, scribed 1/16. White Pine 12" (15") S 20° E 110.0 lks, scribed 1/16 110 lks to corner.

Description of monument and accessories I established to perpetuate the original location of this corner.

Replaced 4" cedar post with 1 1/2" iron pipe with brass cap stamped. Monument projects 30" above ground. NBF - Red Pine 6" N 30° W 66.1 lks, scribed 1/16 BF. Corner is approximately 2 chains south of Lonicus Creek

3498
T36N
25 30
10 S 1/16
11
GPI-1976

Dated at Oneida, Wis., this 12th day of August, 1976

Signature Phillip T. Hansen Title Registered Land Surveyor Registration No. S-498
(County Surveyor, Registered Land Surveyor, or other duly authorized official)

Office of Register of Deeds, County of Oneida. I hereby certify that the within instrument was filed in this office for record on the 30th day of August, 1976 at 10:00 o'clock P. M.

Archie T. Stage
(Register of Deeds)

By: _____ Deputy

0010152101923