

CERTIFIED LAND CORNER RESTORATION

Index No. **V-20**

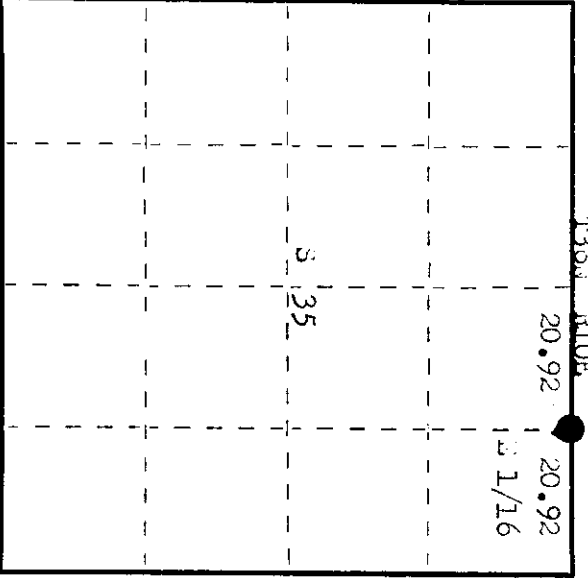
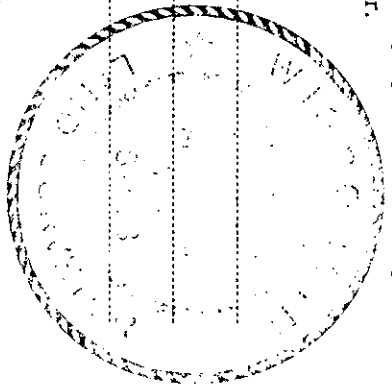
State of Wisconsin }
County of Oneida } ss.

I Philip T. Hansen, do hereby certify that on the 19th day of July, 1976, I found evidence of the 1/16 corner of Section 26 and 35 Township 36, North, Range 10 East, Fourth Principal Meridian, as described hereon; and that from this evidence I established a new monument and accessories as described hereon to perpetuate the original location of this corner.

Resident witnesses:

Jim Claflin

Herb Wagoner



○ = Corner monument restored.

History of original corner establishment: Corner set by proportion by H.C. Lawrence, Registered Land Surveyor, in 1947. ran a random line to 89' 30" west from section corner 42, 20 35, 36 41.84 chains to 1/4 corner. ran line 3.00 chains offset to south of both corners, with clear site between. set 1/16 corner at 20.92 chains - 3 chains north, equidistant. set a 4" cedar post and drove an angle iron at base. no trees for B.Ts.

Description of corner evidence found:
Recovered 5" cedar post, squared and scribed 1/16, 320, 1/16 25. Also an angle iron 6" long beside the post.
No B.Ts recovered.

Description of monument and accessories I established to perpetuate the original location of this corner.
Replaced 5" cedar post with 1 1/2" iron pipe with brass cap stamped.
Monument projects 20" above ground.
B.Ts - Red Pine 12" N 20 W 93.8 lks, scribed 1/16 B.T. T36N R10E 2498
White Pine 8" N 52° W 120.3 lks, scribed 1/16 B.T. S 1/16 2126
Monument and B.Ts painted blue. OPT-1976

Dated at Phillandelser, Wis., this 19th day of August, 1976.

Signature: Philip T. Hansen Title Registered Land Surveyor Registration No. 2-498
(County Surveyor, Registered Land Surveyor, or other duly authorized official)

Office of Register of Deeds, County of Oneida
Instrument was filed in this office for record on the 31st day of September, 1976
at 105 o'clock P. M. I hereby certify that the within

Signature: Donna S. Seeger Kuehn
(Register of Deeds)

By: _____ Deputy

3610260010