

U.S. PUBLIC LAND SURVEY MONUMENT RECORD

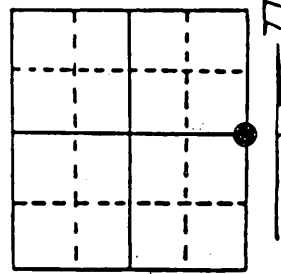
Note: This form is intended and designed to fulfill all requirements of Wisconsin Administrative Code, Chapter A-E 7.08 U.S. Public Land Survey Monument Record (3) (a) (b) (c) (d) (e) (f) (g) (h) (i). An additional sheet may be added if necessary to conform with said requirements.

(a) Corner location: Township 36 North

Range 10 East/West

Town/City/Village MONICO

County ONEIDA



Section 26

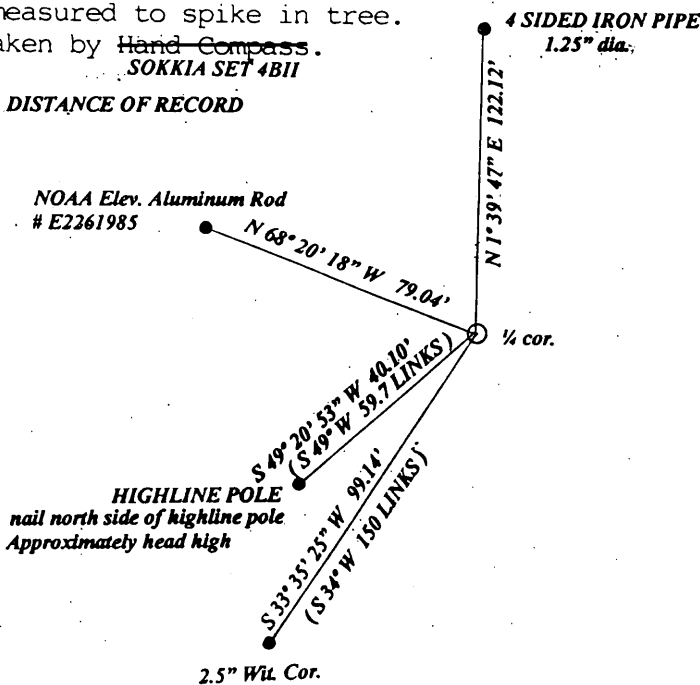
(b) (f) (g) (h) Description of monument found at this corner and if it was accepted, state all evidence (material, testimonial, occupational, plats, records, other monuments) used as a basis for accepting. If not accepted or if nothing was found, state evidence used as basis for establishing location. If reestablished through lost corner proportionate methods, indicate all monuments, distances and directions used to establish. Indicate type of monument found or set and sign post.

See index # T-21 of U.S. Public Land Survey Monument Record sheets for Perpetuation information of this corner location up till this date.

I found a 1" iron pipe buried in the intersection of old highway "8" & Leith Road, The 2.5" iron pipe with brass cap Wtl. Cor. & Highline pole. The Birch Bl. is gone. I set a plastic sign post next to the 2.5" witness corner and referenced as shown below

(c) (d) (e) Plan view of corner with ties to at least 4 witness monuments. If in disagreement with previously established corner, show the distances between the two corners and also indicate the ties to the disputed corner.

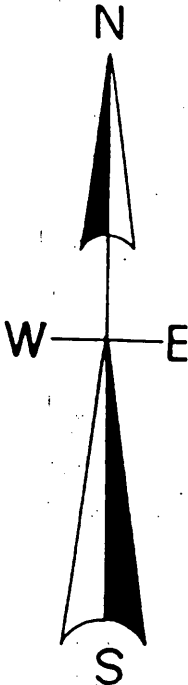
Distances measured to spike in tree.
Bearings taken by ~~Hand Compass~~.
No scale. *SOKKIA SET 4B11*
(0.0) BEARING & DISTANCE OF RECORD



REGISTER OF DEEDS OFFICE
ONEIDA COUNTY
FILED

APR 19 2013

AT _____ O'CLOCK _____ M
KYLE J. FRANSON
REGISTER OF DEEDS



(i) I, Todd J. Loftus
(type or print name) certify that the corner location on this record was determined by me or under my direction and control and that this U.S. Public Land Survey Monument Record is correct and complete to the best of my knowledge and belief.

Todd J. Loftus
Signature Dec 29, 2012
Date

CERTIFIED LAND CORNER RESTORATION

Index No. **7-21**

State of Wisconsin

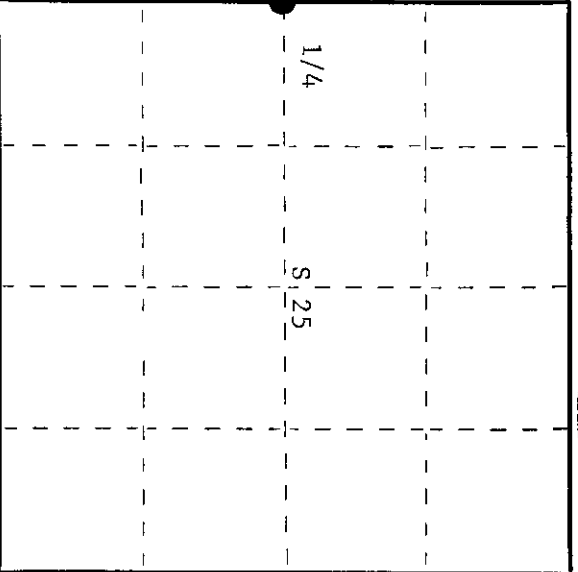
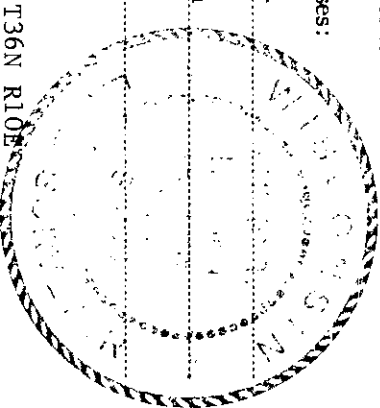
County of Oneida } ss.

I, Philip T. Hansen, do hereby certify that on the 11th day of November, 1975, I found evidence of the Quarter corner of Sections 25 and 26 Township 36 North, Range 10 East, Fourth Principal Meridian, as described hereon, and that from this evidence I established a new monument and accessories as described hereon to perpetuate the original location of this corner.

Resident witnesses:

Glen Barker

Jim Claflin



○ = Corner monument restored.

History of original corner establishment:

Original corner established by Wm. E. Dougherty, Deputy Surveyor, in 1863, from which maple 8" bears S70°W, 11 links and birch 10" bears S52°E, 10 links. Corner recovered by D.H. Vaughan, County Surveyor, in 1900, reset corner from original BT's. H.C. Hall states that he used Vaughan's witnesses to restore the corner in 1933 and again in 1938. Set new witness marks, gray boulder 4' x 5', S45°E, 59-1/2 feet and gray boulder 4' x 5', S45°W, 105 feet, each marked with an X. Corner recovered by H.C. Lawrence, Registered Land Surveyor, in 1951. Used Hall's witness boulders to recover the corner, then in old Highway 8, at the intersection of road running south. Set an iron pipe for 1/4 corner and made new witness posts S31-1/2°E, 50 links and S58°30'W, 50 links, Last W.C. is S20°E, 15 links for highline pole 1508. Description of corner evidence found:
 Recovered 1" iron pipe buried in the intersection of old Highway 8 and Leith Road. Unable to find either of Lawrence's witness pipes, having been either removed or destroyed. Relocated point of witness pipe from highline pole 1508, from which the 1/4 corner was then relocated.

Description of monument and accessories I established to perpetuate the original location of this corner.

Set a 2-1/2" iron pipe with brass cap for a witness corner, S34°W, 150 links, of true corner in road. Gap stamped - S498
 Witness corner projects 24" above ground. T36N R10E
 NBT's - W. Birch 6" S53°W 115 links - scribed 1/4 BT
 Highline Pole 1508 S49°W 59.7 links
 Measurements and bearings of NBT's made from true corner.
 W.C. and NBT's painted blue. 1/4 S26|S25 W.C.
 N34°E, 150 links

Dated at Rhinelander, Wis., this 17th day of November, 1975

Signature: *Philip T. Hansen* Title: Registered Land Surveyor Registration No. S-498
 County Surveyor, Registered Land Surveyor, or other duly authorized official

Office of Register of Deeds, County of Oneida
 Instrument was filed in this office for record on the 4th day of January, 1977
 at 9:00 o'clock P.M.

Louise Teraghe Buckwalter
 (Register of Deeds)

By: Deputy

3610262000