

CERTIFIED LAND CORNER RESTORATION

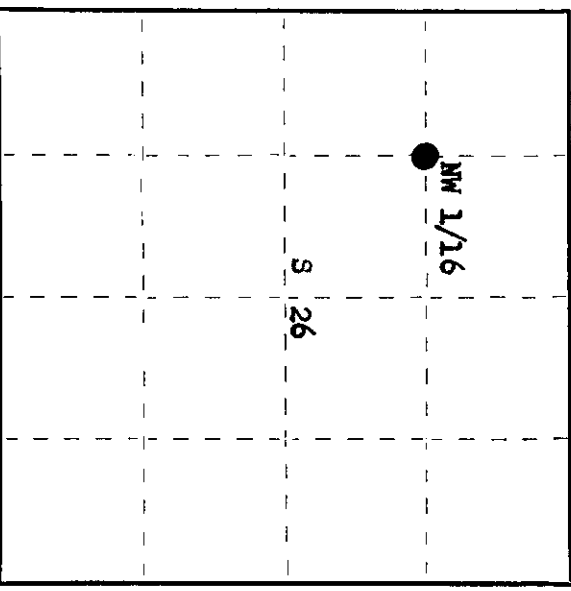
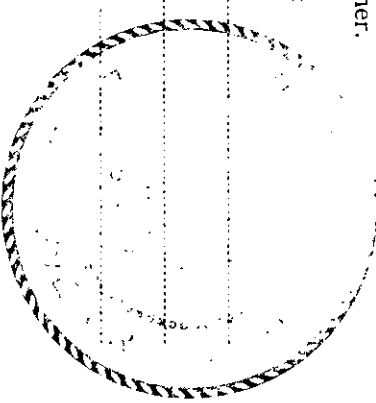
Index No. S-18

State of Wisconsin

County of Oneida } ss.

I Phillip T. Hansen, do hereby certify that on the 17th day of January 19 77, I found evidence of the NW 1/16 corner of Section 26 Township 36 North, Range 10 East, Fourth Principal Meridian, as described hereon; and that from this evidence I established a new monument and accessories as described hereon to perpetuate the original location of this corner.

Resident witnesses:
Glen Barker
Jim Clarlin
Herb Wagoner



History of original corner establishment:

Corner established by D.H. Vaughan, County Surveyor, in 1905. Set post and marked BTs - White Pine 26" N 21° W 24 links and Birch 10" S 66 1/2° W 19 links. Corner recovered by H.C. Lawrence, Registered Land Surveyor, in 1947. Recovered Vaughan's old BTs. Set new post.

Description of corner evidence found:

Recovered Lawrence's 4" cedar post, down under snow, squared and scribed NW 1/16.
Recovered point broken off in ground.
Recovered Vaughan's White Pine stump 26" N 21° W 24 links, scribing BT visible.
Birch 10" S 66 1/2° W 19 links was not visible.

Description of monument and accessories I established to perpetuate the original location of this corner.

Replaced wood point with 1 1/2" OD iron pipe with 2" brass cap stamped:
Monument projects 24" above ground.
NBTS - White Spruce 8" S 87° E 61.3 links.
Maple 6" S 51° E 7.7 links, scribed 1/16 BT.

3498
T36N R10E
NW 1/16 S 26
CPI-1977

Dated at Rhinelander, Wis., this 28th day of January, 19 77

Signature Phillip T. Hansen, Registered Land Surveyor, or other duly authorized official. Title Registered Land Surveyor Registration No. S-498

Office of Registrar of Deeds, County of Oneida. I hereby certify that the within instrument was filed in this office for record on the 24th day of February, 19 77 at 1:08 o'clock P.M.

Deane W. Range, Registrar of Deeds

By: Deputy

3610263030