

CERTIFIED LAND CORNER RESTORATION

Index No. 7-15

State of Wisconsin

County of Oneida } ss.

I Phillip T. Hansen, do hereby

certify that on the 27th day of July, 1979, I found

established the C 1/4

corner of Section 27

Township 36, North, Range

10 East, Fourth Principal Meridian,

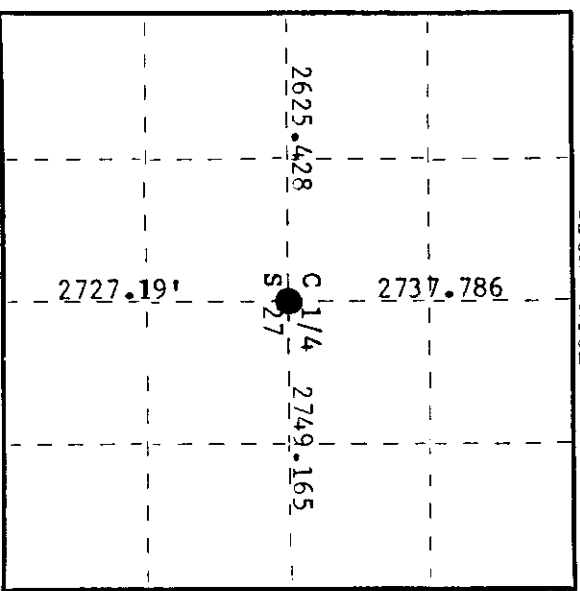
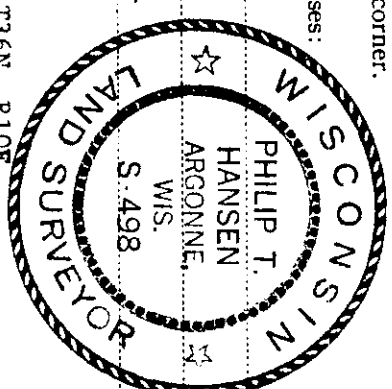
as described hereon; and that from this evidence I established a new monument and accessories as described hereon to perpetuate the original location of this corner.

Resident witnesses:

Glen Barker

Jim Clafflin

Herb Wagoner



○ = Corner monument restored.

History of original corner establishment:

Corner established by D.H. Vaughan, County Surveyor. Set post and marked BT's - White Pine 22" N27°W 50 links and White Pine 12" N55°W 42 links. His distance from N 1/4 corner was 41.50 chains.

Corner recovered by H.C. Lawrence, Registered Land Surveyor, in 1947. Recovered an old wooden post and an old rusted iron pipe. Recovered stumps of old BT's, but no marks visible. Set new post beside the iron pipe and marked NBT - W.Pine 8" N32°E 24 links. H.C. Lawrence's distance from N 1/4 corner checked Vaughan's distance of 41.50 links.

Description of corner evidence found:

No evidence of this corner recovered. Corner falls in old Highway 8 right of way. Corner established by traverse and computation. Corner established at 2737.786 feet S 1° 59' 56" W of N 1/4 corner, 2749.165 feet N 87° 50' 40" W of E 1/4 corner falls on the north shoulder of old Highway 8.

Description of monument and accessories I established to perpetuate the original location of this corner.

Drove a 1-1/2" x 18" iron pipe, 4" below the surface of the road for true corner. Set a 2-1/2" Bernitsen A-1 Federal Monument 400 feet north for witness post.

Monument projects 18" above ground. Cap stamped:

- Marked NBT's -
- R.Pine 12" S20°E 31.95 feet, scribed C 1/4 BT.
- Maple 6" S66°W 83.75 feet, scribed C 1/4 BT.
- Power pole N71°W 100.45'

S498
T36N R10E
C 1/4 S 27
S 40 ft. to Cor.
1979

Dated at Rhineland, Wis., this 31st day of July, 1979

Signature Phillip T. Hansen Title Registered Land Surveyor Registration No. S-498
(County Surveyor, Registered Land Surveyor, or other duly authorized official)

Office of Register of Deeds, County of Oneida, 7/24 day of August, 1979
at 1:30 o'clock P. M. I hereby certify that the within instrument was filed in this office for record on the 7/24 day of August, 1979

Dennis P. Hengge
(Register of Deeds)

By Dennis P. Hengge Deputy

3610272020