

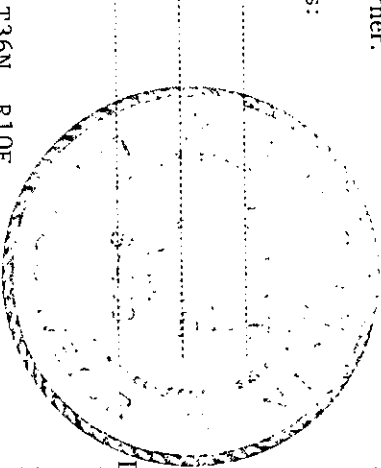
State of Wisconsin

County of Oneida } ss.

I Phillip T. Hansen, do hereby certify that on the 10th day of September, 1975, I found evidence of the W-1/16 corner of Sections 29 and 32 Township 36, North, Range 10E, Fourth Principal Meridian, as described hereon; and that from this evidence I established a new monument and accessories as described hereon to perpetuate the original location of this corner.

Resident witnesses:

Glen Barker
Jim Clafin



T36N, R10E

History of original corner establishment:
Corner established by H.C. Lawrence, Reg. Land Surveyor, in 1947. From Section Corner 29-30-31 and 32, which he had restored from original ash BT, he ran east 41.56 chains to a point 120 links due south of 1/4 corner between Sections 29 and 32. Set W-1/16 corner at 20.78 chains, 60 links due north, intermediate, marked bearing trees, W. pine 14" N60°E, 69 links and W. pine 12" S72°E, 87 links.

Description of corner evidence found:

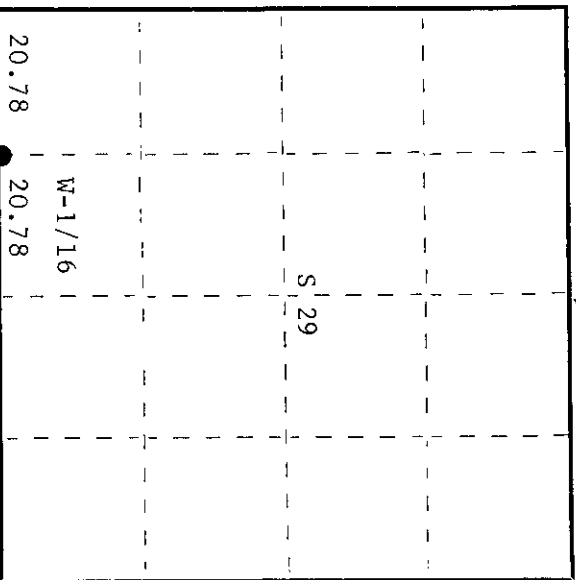
Recovered 4" cedar post, squared and scribed W-1/16 S29, W-1/16 S32 in fair condition.
Recovered OBT. White pine 14" (16") N60°E (N64°E) 69 links Scribed W-1/16 S29 NBT
White pine 12" (13") S73°E (S70°E) 87 links Scribed W-1/16 S32 NBT

Description of monument and accessories I established to perpetuate the original location of this corner.
Replaced cedar post with 1-1/2" iron pipe with 2" brass cap stamped -

No additional accessories established.

S498
T36N R10E
W-1/16 S32

CPT-1975



○ = Corner monument restored.

Dated at Rhineland, Wis. this 22nd day of September, 1975.

Signature *Phillip T. Hansen* Title Registered Land Surveyor Registration No. S-498
County Surveyor, Registered Land Surveyor, or other duly authorized official

Office of Register of Deeds, County of Oneida
at 10:00 o'clock A.M. 17th day of November 1975
I hereby certify that the within instrument was filed in this office for record on the 17th day of November 1975

Signature *Doris Neugebauer*
Register of Deeds

By: Deputy

3610290030