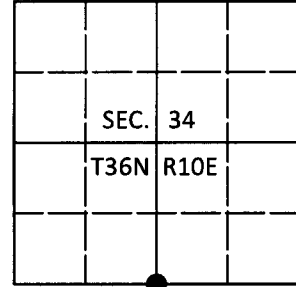


# U.S. PUBLIC LAND SURVEY MONUMENT RECORD

Note: This form is intended and designed to fulfill all requirements of Wisconsin Administrative Code, Chapter A-E 7.08 U.S. Public Land Survey Monument Record (3)(a-i).

(a) CORNER LOCATION  
 1/4 Cor. of Secs. 3 & 34  
 Township 35 & 36 North  
 Range 10 East of the 4th P.M.  
 Town of Monico and Schoepke  
 County of Oneida

WISCRS - Oneida County  
 N: 134,426.10 USft  
 E: 311,527.75 USft  
 Datum: NAD 83(2011)  
 GNSS Method: RTN - Direct  
 GNSS Control: WISCORS VRS



(b) HISTORY OF ORIGINAL CORNER ESTABLISHMENT

Original Surveyor: Hiram C. Fellows

Original Accessories:

Date of Survey      Commenced: June, 1859  
                                  Completed: July, 1859

Spruce 8" S35°E, 12 lks.  
 Tamarack 6" N20°E, 25 lks.

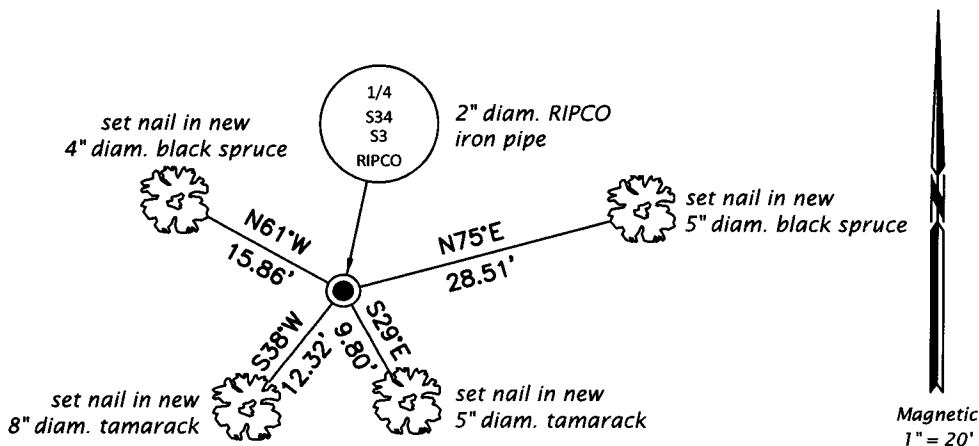
(b)(f)(g)(h) Description of monument found at this corner and if it was accepted, state all evidence (material, testimonial, occupational, plats, records, other monuments) used as a basis for accepting. If not accepted or if nothing was found, state evidence used as basis for establishing location. If re-established through lost corner proportionate methods, indicate all monuments, distances and directions used to establish. Indicate type of monument and sign post found or set.

*January, 1961: Notes by Rhinelander Paper Co. in RIPCO book 3 on page 125 indicate corner was recovered with no description given.*

*July 25, 2018: I found and accepted the record monument, a 2" diam. iron pipe with a 3-1/4" diam. RIPCO aluminum cap (broken) projecting 12" above the bog surface. An unmarked 2-1/2" diam. brass-capped iron pipe bears N10°W, 0.82 ft., origin unknown. I found humps that closely match the GLO bearing tree locations. I found or established accessories as shown below. I set a white vinyl sign post bearing Northwest, 1 ft.*

*The coordinate value shown has been verified by at least one of the following methods: 1) comparison to a previously GPS determined published value; 2) the value is the average of two or more GPS observations at a markedly different time; 3) one or more distances were measured back to the GPS observed corner from temporary GPS observed offset locations.*

(c)(d)(e) Plan view of corner with ties to at least 4 witness monuments. If in disagreement with previously established corner, show the distances between the two corners and also indicate the ties to the disputed.



REGISTER OF DEEDS OFFICE  
 ONEIDA COUNTY  
 FILED

AUG 16 2018

KYLE J. FRANSON  
 REGISTER OF DEEDS

(i) I, Jeffrey W. Austin, Professional Land Surveyor No. S-1885, hereby certify that the corner location on this record was determined by me or under my direction and control and that this U.S. Public Land Survey Monument Record is correct and complete to the best of my knowledge and belief.

  
 Signature

AUG. 8, 2018  
 Date