

CERTIFIED LAND CORNER RESTORATION

Index No. **2-21**

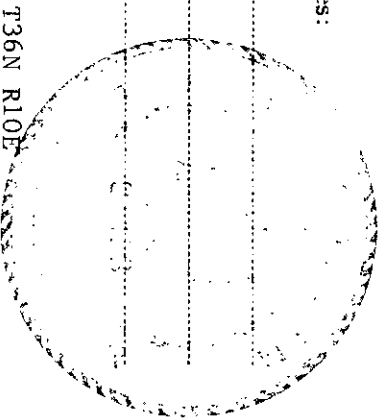
State of Wisconsin } ss.
 County of Oneida

I Philip T. Hansen do hereby certify that on the 13th day of November 1975, I found evidence of the Section Corner corner of Sections 1, 2, 35, and 36 Township 35 and 36, North, Range 10 East, Fourth Principal Meridian, as described hereon; and that from this evidence I established a new monument and accessories as described hereon to perpetuate the original location of this corner.

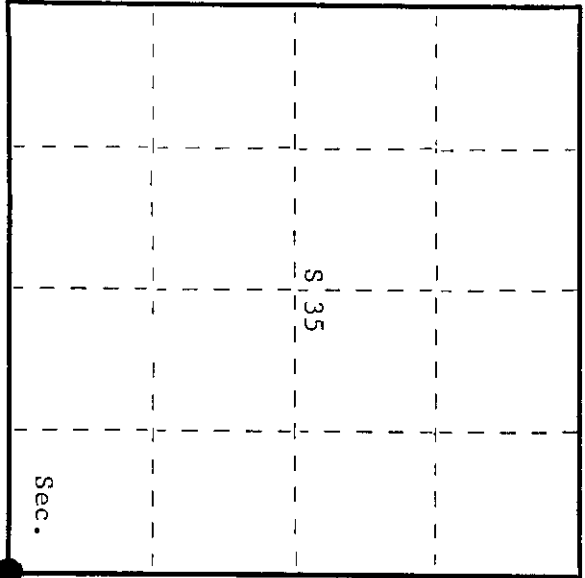
Resident witnesses:

Glen Barker

Jim Clafin



T36N R10E



○ = Corner monument restored.

History of original corner establishment:

Original corner established by Hiram C. Fellows, Deputy Surveyor, in 1859, from which pine 10" bears N30°W, 15 links and spruce 8" bears S10°W, 10 links. Corner recovered by B.F. Dorr, County Surveyor, in 1896 who claims to have recovered original BT's. Set new stake and marked NBT - White Pine N8°E 7 links. Corner recovered by H.C. Lawrence, Registered Land Surveyor, in 1949. Found an iron pipe and very old post which agreed with calls to Dorr's white pine stump. Set new post and marked NBT's - Oak 10" S13°W 26-1/2 links and Sugar 9" N68°W 28 links.

Description of corner evidence found:

Recovered 5" cedar post, squared and scribed S1, T35N, S2 R10E, S35, S36 T36N, in fair condition. Also recovered 2-1/2" iron pipe with brass cap not scribed beside it. Checked bearing and distance to iron pipe, which fit good.
 Recovered OBT's - Pine stump 16" N8°E 7 links - scribed S36 BT
 Oak 10" (12") S13°W 26.5 links - scribed BT
 Sugar 9" (11") N68°W (N64°W) 28 links - scribed S35, bottom scribe grown over.

Description of monument and accessories I established to perpetuate the original location of this corner.

As the iron pipe was recovered in very good shape, it was left in place and stamped -
 Pipe projects 26" above ground. S498
 No NBT's established. T36N R10E
 Lawrence's 5" cedar post left in place. Sec. 35/36
 Pipe, post, and BT's painted blue. 2/1

Dated at Rhinelander, Wis., this 18th day of November, 1975.

Signature: *Philip T. Hansen* Title: Registered Land Surveyor Registration No. S-498
 (County Surveyor, Registered Land Surveyor, or other duly authorized official)

Office of Register of Deeds, County of Oneida
 Instrument was filed in this office for record on the 4th day of January, 1977
 at 2:00 o'clock P.M.

Terri George Fischer
 (Register of Deeds)

By: Deputy

36103500

U.S. PUBLIC LAND SURVEY MONUMENT RECORD

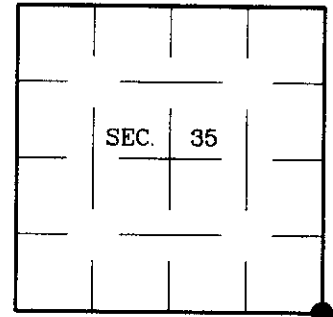
Note: This form is intended and designed to fulfill all requirements of Wisconsin Administrative Code, Chapter A-E 7.08 U.S. Public Land Survey Monument Record (3)(a)(b)(c)(d)(e)(f)(g)(h)(i). An additional sheet may be added if necessary to conform with said requirements.

(a) CORNER LOCATION:

Corner common to Secs. 1, 2, 35, 36
 Township 35 and 36 North
 Range 10 East, 4th Principal Meridian
 Town of Monico

Plane Coordinates

X:
 Y:
 Datum:
 County of Oneida



(b) HISTORY OF ORIGINAL CORNER ESTABLISHMENT

Original Surveyor: Hiram Fellows
 Date of Survey: Commenced: July, 1859
 Completed: July, 1859

Original Accessories:

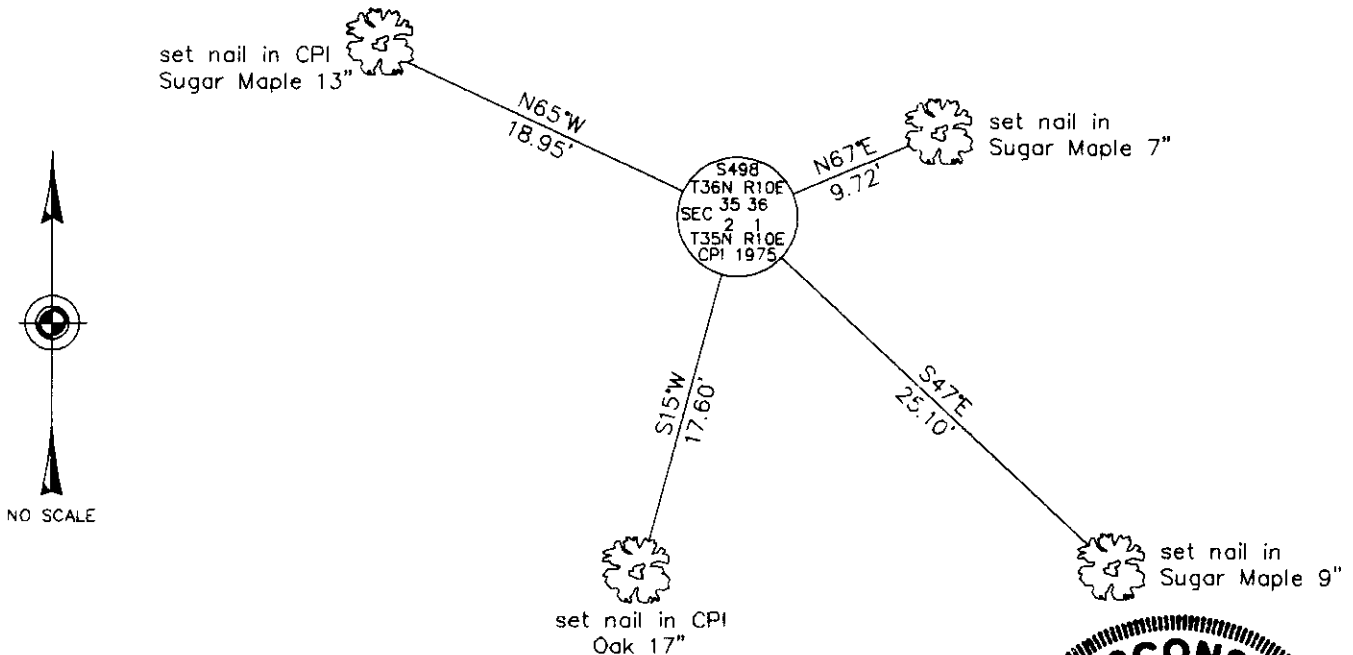
Pine 6 N15°W 15 lks.
 Fir 8 N55°E 15 lks.
 Spruce 6 S60°E 20 lks.
 Oak 12 S60°W 10 lks.

(b)(f)(g)(h) Description of monument found at this corner and if it was accepted, state all evidence (material, testimonial, occupational, plats, records, other monuments) used as a basis for accepting. If not accepted or if nothing was found, state evidence used as basis for establishing location. If reestablished through lost corner proportionate methods, indicate all monuments, distances and directions used to establish. Indicate type of monument and sign post found or set.

NOTE: This is a perpetuation of a previous USPLS Monument Record by Philip T. Hansen, RLS dated November 18, 1975 and filed in the office of the Oneida County Register of Deeds. A complete history of the corner can be found on the previous monument record. I accept the previous location as a true and faithful perpetuation or reestablishment of the original corner location and further perpetuate it as follows.

April 25, 2001: I found and accepted an iron post, 2-1/2 ins. diam., firmly set with a 2-1/2 ins. diam. CPI brass cap, 34 ins. above the ground surface, marked as shown below. An old scribed wood post is wired to the monument. I found or established accessories as shown below and set a plastic sign post bearing Northeast, 1-1/2 ft. dist.

(c)(d)(e) Plan view of corner with ties to at least 4 witness monuments. If in disagreement with previously established corner, show the distances between the two corners and also indicate the ties to the disputed.



(i) I, Jeffrey W. Austin, Registered Land Surveyor No. S-1885, hereby certify that the corner location on this record was determined by me or under my direction and control and that this U.S. Public Land Survey Monument Record is correct and complete to the best of my knowledge and belief.

Signature

3-22-01

Date



INDEX NO. Z-21

3610350000