

CERTIFIED LAND CORNER RESTORATION

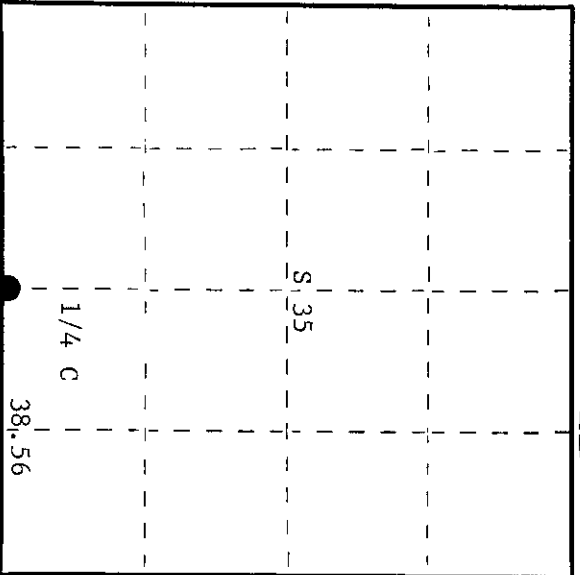
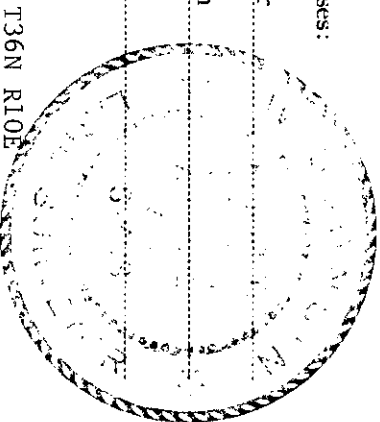
Index No. **2-19**

State of Wisconsin } ss.
 County of Oneida

I Philip T. Hansen do hereby certify that on the 13th day of November, 1975, I found evidence of the Quarter corner of Sections 2 and 35 Township 35 and 36, North, Range 10, East, Fourth Principal Meridian, as described hereon; and that from this evidence I established a new monument and accessories as described hereon to perpetuate the original location of this corner.

Resident witnesses:

Glen Barker
 Jim Claffin



○ = Corner monument restored.

History of original corner establishment:

Original corner established by Hiram C. Fellows, Deputy Surveyor, in 1859, from which birch 12" bears N30°W, 8 links and sugar 11" bears S20°W, 15 links. Corner recovered by H.C. Lawrence, Registered Land Surveyor, in 1954. He ran the line between Sections 2, 35, 10 and Sections 35, 36, 10, S89°00'W from the corner Sections 1, 2, 35, 36, a distance of 38.56 chains to a point 70 links north of 1/4 corner. Recovered an iron pipe and the original birch 12" still standing. Set a 4" cedar post and marked NBT - Hemlock 14" S28°W 61 links

Description of corner evidence found:

Recovered 5" cedar post, squared and scribed 1/4 S S2, 1/4 S S35, in fair condition with rock cairn around base. Also found 2-1/2" iron pipe w/brass cap (not scribed) 4 links, S44°W of cedar stake. As cedar stake was set by Lawrence from original BT, this was accepted as the true corner.
 Recovered "original" yellow birch 12", N30°W, 8 links - now a decayed stump and hemlock 14", S28°W, 61 links - now a cut-off stump, scribing visible.

Description of monument and accessories I established to perpetuate the original location of this corner.

Replaced 4" cedar post with 2-1/2" Bernsten, A-1 Federal Monument, aluminum with magnet installed in cap and base, projecting 2' above ground. S498
 Cap stamped - T36N R10E
 Placed rock cairn around base
 NBT's - Yellow Birch 11" N67°E 6 links - scribed 1/4 BT
 Sugar 7" N41°W 43.8 links - scribed 1/4 BT 1/4 S/35 S/2
 Pipe and NBT's painted blue. T35N R10E 1975

Dated at Rhinelander, Wis., this 18th day of November, 1975

Signature: *Philip T. Hansen* Title: Registered Land Surveyor Registration No. S-498
 (County Surveyor, Registered Land Surveyor, or other duly authorized official)

Office of Register of Deeds, County of Oneida
 Instrument was filed in this office for record on the 4th day of November, 1977 at 2:05 o'clock P.M.
 Thereby certify that the within

Signature: *Lorrie Teraghe Kuehn*
 (Register of Deeds)

By: Deputy

3610350020

U.S. PUBLIC LAND SURVEY MONUMENT RECORD

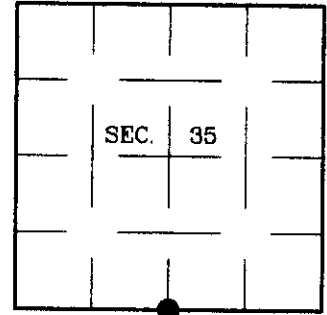
Note: This form is intended and designed to fulfill all requirements of Wisconsin Administrative Code, Chapter A-E 7.08 U.S. Public Land Survey Monument Record (3)(a)(b)(c)(d)(e)(f)(g)(h)(i). An additional sheet may be added if necessary to conform with said requirements.

(a) CORNER LOCATION:

1/4 Corner common to Secs. 2 and 35
 Township 35 and 36 North
 Range 10 East, 4th Principal Meridian
 Town of Monico

Plane Coordinates

X:
 Y:
 Datum:
 County of Oneida



(b) HISTORY OF ORIGINAL CORNER ESTABLISHMENT

Original Surveyor: Hiram Fellows
 Date of Survey: Commenced: July, 1859
 Completed: July, 1859

Original Accessories:

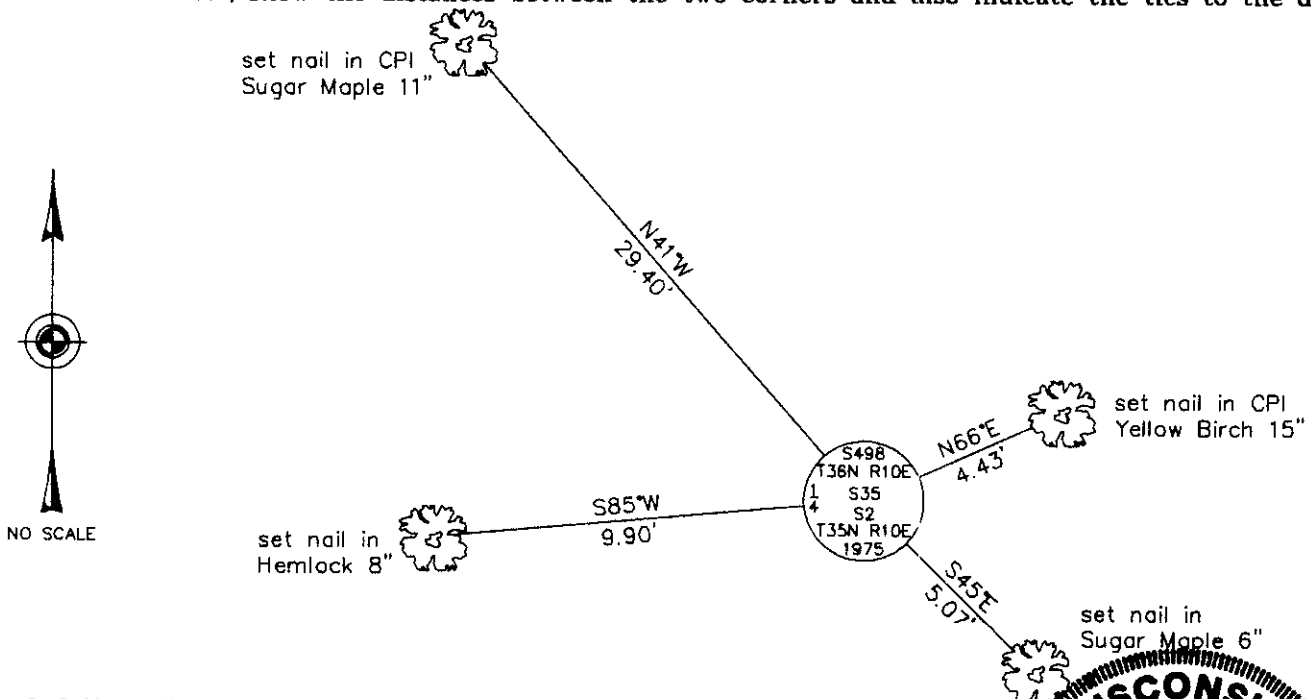
Birch 12 N30°W 8 lks.
 Sugar 10 S20°W 15 lks.

(b)(f)(g)(h) Description of monument found at this corner and if it was accepted, state all evidence (material, testimonial, occupational, plats, records, other monuments) used as a basis for accepting. If not accepted or if nothing was found, state evidence used as basis for establishing location. If reestablished through lost corner proportionate methods, indicate all monuments, distances and directions used to establish. Indicate type of monument and sign post found or set.

NOTE: This is a perpetuation of a previous USPLS Monument Record by Philip T. Hansen, RLS dated November 18, 1975 and filed in the office of the Oneida County Register of Deeds. A complete history of the corner can be found on the previous monument record. I accept the previous location as a true and faithful perpetuation or reestablishment of the original corner location and further perpetuate it as follows.

April 18, 2001: I found and accepted an aluminum post, 2-1/2 ins. diam., firmly set with a 3-1/4 ins. diam. CPI aluminum cap, 32 ins. above the ground surface, marked as shown below. A rock cairn surrounds the monument. I found or established accessories as shown below and set a plastic sign post bearing Northwest, 1 ft. dist.

(c)(d)(e) Plan view of corner with ties to at least 4 witness monuments. If in disagreement with previously established corner, show the distances between the two corners and also indicate the ties to the disputed.



(i) I, Jeffrey W. Austin, Registered Land Surveyor No. S-1885, hereby certify that the corner location on this record was determined by me or under my direction and control and that this U.S. Public Land Survey Monument Record is correct and complete to the best of my knowledge and belief.

Signature

8-22-01

Date



3610350000