

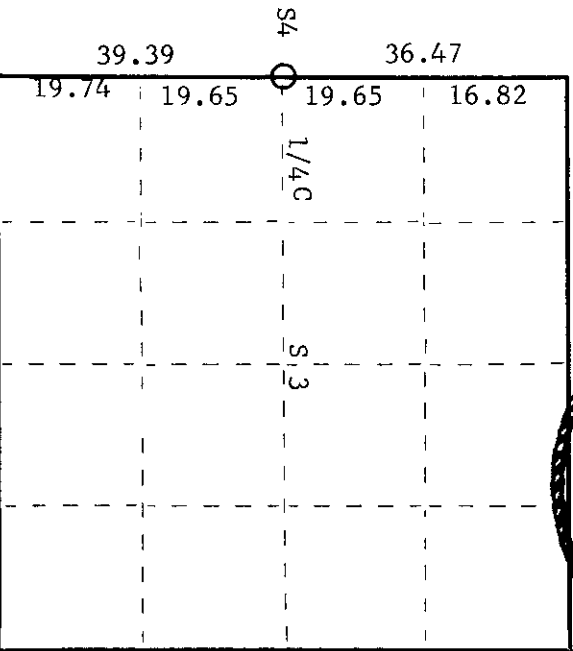
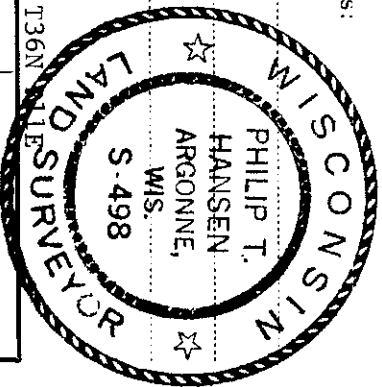
CERTIFIED LAND CORNER RESTORATION

Index No. **C-13**

State of Wisconsin }
 County of Oneida } ss.

I Philip T. Hansen, do hereby certify that on the 28th day of January, 1975, I found evidence of the 1/4 corner of between Sections 3 and 4 Township 36 North, Range 11 E, Fourth Principal Meridian, as described hereon; and that from this evidence I established a new monument and accessories as described hereon to perpetuate the original location of this corner.

Resident witnesses:



○ = Corner monument restored.

History of original corner establishment:
 Original corner established by Wm. E. Dougherty, Government Deputy Surveyor, in 1859.

Tamarack 12" N60W 23 links
 Cedar 8" N55E 30 links

Corner re-established by D.H. Vaughan in 1907. BT's - birch 8", N68E, 29 links; cedar 8", N59-1/2W, 27-1/4 links. Corner recovered by H.C. Lawrence, Registered Land Surveyor, in 1947, at which time he set a new post and established new BT's, viz., - Cedar 14" S70°E, 33 links; Cedar 6" N62W, 40-1/2 links. Corner recovered by H.C. Lawrence in 1952. Found cedar post and BT's intact.
 Description of corner evidence found:

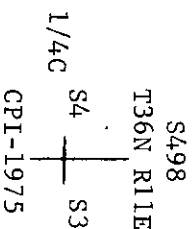
Recovered 4" cedar post, squared and scribed 1/4S S3; 1/4S S4 in fair condition.

Recovered Cedar 10", S70°E, 33 links.

No other BT's visible.

Description of monument and accessories I established to perpetuate the original location of this corner.
 Replaced cedar post with 2-1/2" x 5' galvanized iron pipe w/brass cap stamped -

NBT - Cedar 11", S14°W, 47.3 links scribed 1/4 BT.



Dated at Rhineland, Wis., this 22 day of May, 1975.

Signature: *Philip T. Hansen* Title: Registered Land Surveyor Registration No. S-498
 (County Surveyor, Registered Land Surveyor, or other duly authorized official)

Office of Register of Deeds, County of Oneida. I hereby certify that the within instrument was filed in this office for record on the 1st day of October, 1975 at 3:08 o'clock P.M.

Doris Berge Kuehn
 (Register of Deeds)

By: Deputy

3611042000