

CERTIFIED LAND CORNER RESTORATION

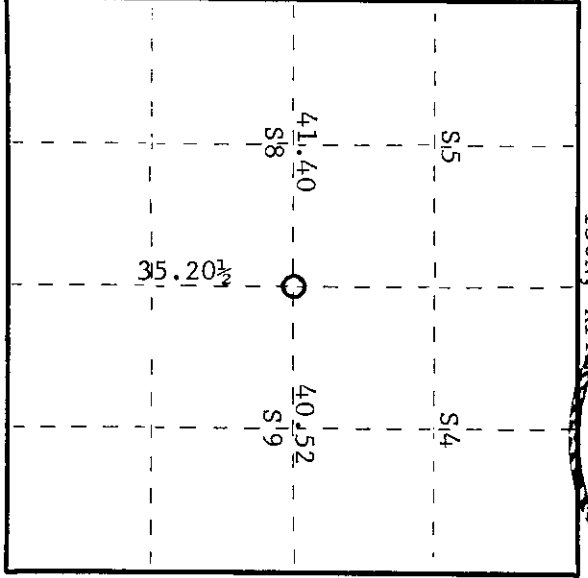
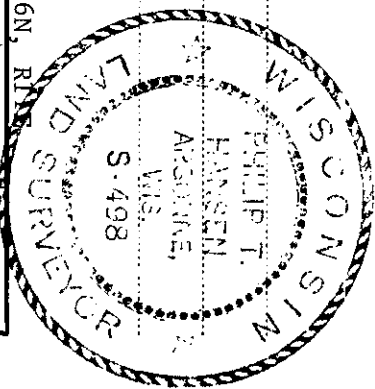
Index No. **E-9**

State of Wisconsin

County of Oneida } ss.

I, Phillip T. Hansen, do hereby certify that on the 31st day of January, 1975, I found evidence of the Section Corner corner of 4-5-8 & 9 Township 36 North, Range 11 East, Fourth Principal Meridian, as described hereon; and that from this evidence I established a new monument and accessories as described hereon to perpetuate the original location of this corner.

Resident witnesses:



○ = Corner monument restored.

History of original corner establishment:

Original corner set by Wm. E. Dougherty, Gov't Deputy Surveyor, in 1859.

Reestablished by D.H. Vaughan, 1904, County Surveyor.

Recovered and remarked by H.C. Lawrence, Registered Land Surveyor, during his retracement survey of 1946. Recovered wood post, also an iron pipe. Tamarack 9" was a stub 20" high. Stump of tamarack 14" was found. Set 3" tamarack, scribed.

Description of corner evidence found:
Recovered a 2-1/2" x 5' galvanized pipe with brass cap with no scribing. No trace found of 3" tamarack stake.

Recovered 10" tamarack stub still intact but badly rotted.

Description of monument and accessories I established to perpetuate the original location of this corner.

Brass cap was stamped - S498
 NBT's - Black spruce 6" N24°0'E 40.4 links scribed SC BT
 Black spruce 5" N27°0'W 47.3 links scribed SC BT

S5 | S4
 S8 | S9

CPI-1975

Dated at Rhineland, Wis., this 10th day of June, 1975.

Signature *Phillip T. Hansen* Title Registered Land Surveyor Registration No. S-498
 (County Surveyor, Registered Land Surveyor, or other duly authorized official)

Office of Register of Deeds, County of Oneida, at 300 o'clock M. I hereby certify that the within instrument was filed in this office for record on the 1st day of October, 1975.

Donna Verage Tuelke
 (Register of Deeds)

By Deputy

36 1105 0000