

CERTIFIED LAND CORNER RESTORATION

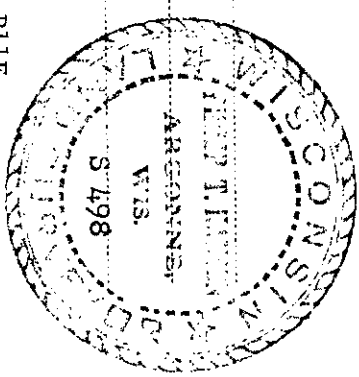
Index No. **G-9**

State of Wisconsin

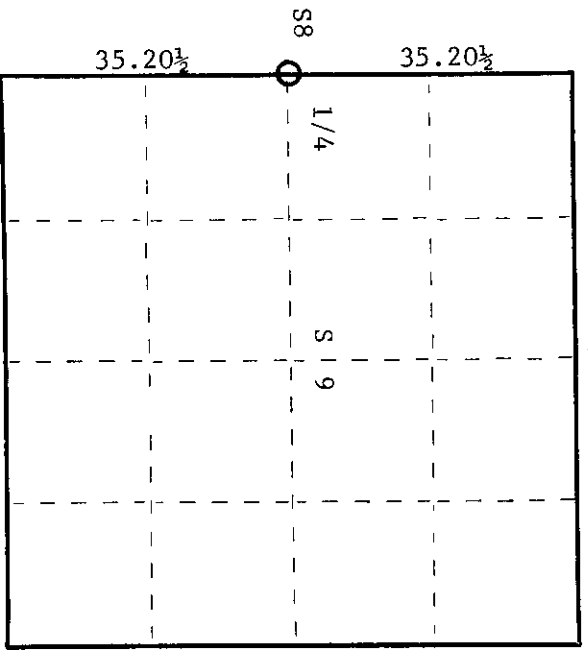
County of Oneida } ss.

I Phillip T. Hansen, do hereby certify that on the 8th day of January, 1975, I found evidence of the 1/4 corner of Sections 8 and 9 Township 36, North, Range 11 East, Fourth Principal Meridian, as described hereon; and that from this evidence I established a new monument and accessories as described hereon to perpetuate the original location of this corner.

Resident witnesses:



T36N, R11E



○ = Corner monument restored.

History of original corner establishment:
Original corner set by Wm. E. Dougherty, Gov't Deputy Surveyor in 1859.

Recovered and remarked by B.F. Dorr in 1898. Set new BT's, white pine 12", N57 1/2 E, 29 lks. Balsam 8", S54W, 25 lks. Corner was recovered by D.H. Vaughan, County Surveyor in 1904. H.C. Lawrence, Reg. Land Surveyor, recovered corner and the white pine stump in 1936. He set a new cedar post and established NBT's.

Sugar maple 10" N50W 8 1/2 lks.
White birch 3" S54W 25 lks.
Hemlock 14" S43W 59 lks.

Description of corner evidence found:
Recovered 4" cedar post, squared and scribed S8-1/4, S9-1/4 in fair condition.
No trace of bearing trees visible.

Description of monument and accessories I established to perpetuate the original location of this corner.
Set new 2-1/2" x 5' galvanized iron pipe with brass cap stamped -

New BT's	Black spruce 8"	S18°E	20 lks.	scribed 1/4 BT	T36N, R11E
	Black spruce 8"	S68W	39 lks.	scribed 1/4 BT	S498

S8: S9
1/4
CPT-1975

Dated at Rhineland, Wis., this 16th day of June, 1975.

Signature Phillip T. Hansen Title Registered Land Surveyor Registration No. S-498
(County Surveyor, Registered Land Surveyor, or other duly authorized official)

Office of Register of Deeds, County of Oneida lat hereby certify that the within instrument was filed in this office for record on the 1st day of October, 1975 at 3:00 o'clock P. M.

Doris Savage Kuehn
(Register of Deeds)

By _____ Deputy

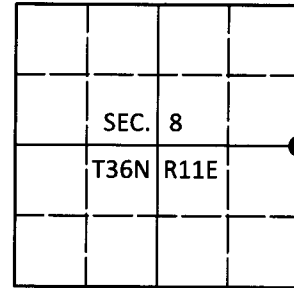
3611082000

U.S. PUBLIC LAND SURVEY MONUMENT RECORD

Note: This form is intended and designed to fulfill all requirements of Wisconsin Administrative Code, Chapter A-E 7.08 U.S. Public Land Survey Monument Record (3)(a-i).

(a) CORNER LOCATION
 1/4 Cor. of Secs. 8 & 9
 Township 36 North
 Range 11 East of the 4th P.M.
 Town of Monico
 County of Oneida

WISCRS - Oneida County
 N: 158,104.64 USft
 E: 334,374.76 USft
 Datum: NAD 83(2011)
 GNSS Method: RTN - Direct
 GNSS Control: WISCORS VRS



(b) HISTORY OF ORIGINAL CORNER ESTABLISHMENT

Original Surveyor:

Original Accessories:

Date of Survey

Commenced:
 Completed:

See previous USPLS Monument Record

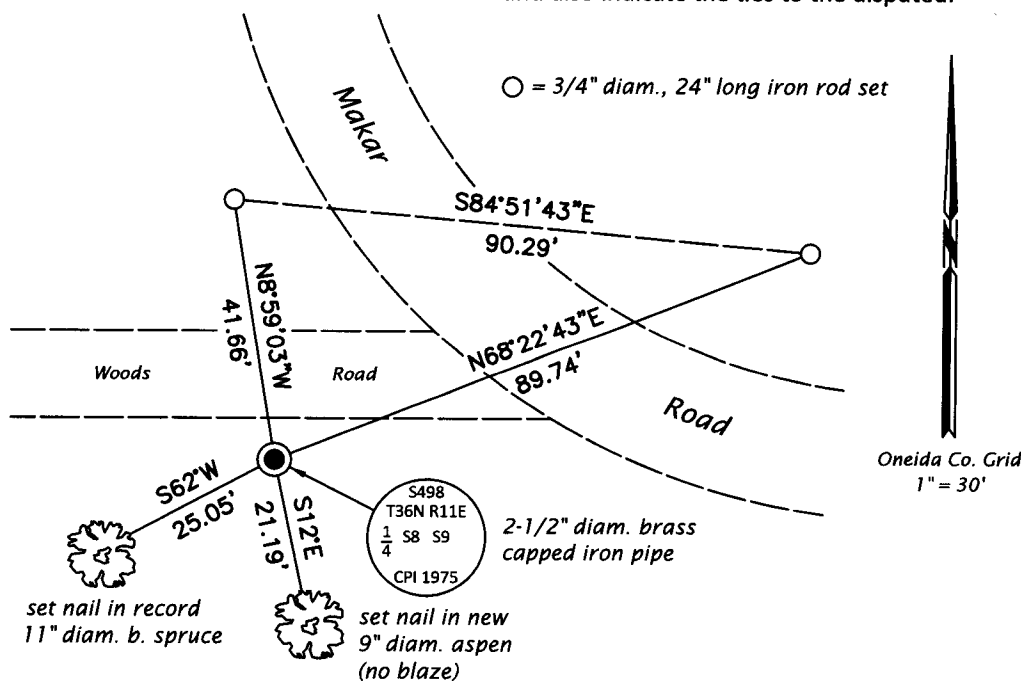
(b)(f)(g)(h) Description of monument found at this corner and if it was accepted, state all evidence (material, testimonial, occupational, plats, records, other monuments) used as a basis for accepting. If not accepted or if nothing was found, state evidence used as basis for establishing location. If re-established through lost corner proportionate methods, indicate all monuments, distances and directions used to establish. Indicate type of monument and sign post found or set.

This is a perpetuation of a previous USPLS Monument Record by Philip T. Hansen, RLS dated June 16, 1975 and filed in the office of the Oneida County Register of Deeds. A complete history of the corner can be found on the previous monument record. I accept the previous location as a true and faithful perpetuation or reestablishment of the original corner location and further perpetuate it as follows.

April 17, 2018: I found and accepted the record monument, a 2-1/2" diam. iron pipe with a 2-1/2" diam. brass cap projecting 12" above the ground surface. The record bearing tree at 20 lks. is down. I found or established accessories as shown below. I set a white vinyl sign post bearing Southeast, 0.8 ft.

The coordinate value shown has been verified by at least one of the following methods: 1) comparison to a previously GPS determined published value; 2) the value is the average of two or more GPS observations at a markedly different time; 3) one or more distances were measured back to the GPS observed corner from temporary GPS observed offset locations.

(c)(d)(e) Plan view of corner with ties to at least 4 witness monuments. If in disagreement with previously established corner, show the distances between the two corners and also indicate the ties to the disputed.



REGISTER OF DEEDS OFFICE
 ONEIDA COUNTY
 FILED

MAY 01 2018

KYLE J. FRANSON
 REGISTER OF DEEDS

(i) I, Jeffrey W. Austin, Professional Land Surveyor No. S-1885, hereby certify that the corner location on this record was determined by me or under my direction and control and that this U.S. Public Land Survey Monument Record is correct and complete to the best of my knowledge and belief.

[Handwritten Signature]
 Signature

APR 23, 2018
 Date