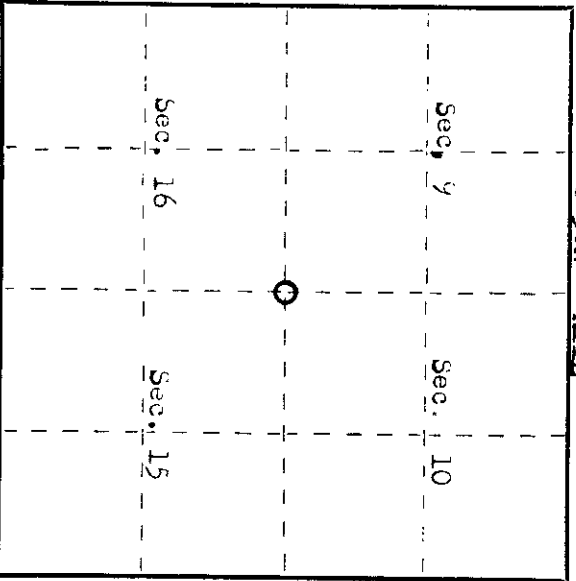
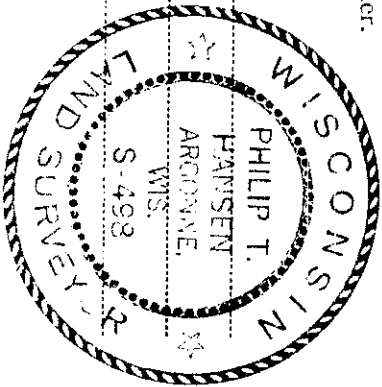


State of Wisconsin } ss.
 County of Oneida

I Philip T. Hansen do hereby certify that on the 30th day of December, 1974, I found evidence of the Section corner corner of 9, 10, 15 and 16 Township 36 North, Range 4, 11E, Fourth Principal Meridian, as described hereon; and that from this evidence I established a new monument and accessories as described hereon to perpetuate the original location of this corner.



CERTIFIED LAND CORNER RESTORATION

Index No. J-13

History of original corner establishment:

Origin of corner established by William B Dougherty Gov. Deputy Surveyor in 1859
 Birch 12" 803E 20 lks
 Birch 12" N40W 21 lks

Description of corner evidence found: Recovered H.J. Lawrence's restored corner for his retracement survey of 1/52. He recovered an iron pipe and 2 BFs of unknown origin. They were not describe in any note in the court house. He set a 5" cedar post squared and scribed S 7,10,15 and 16, which recovered in good condition.
 BFs of unknown origin were recovered as described above.

Description of monument and accessories I established to perpetuate the original location of this corner.

Set 2 1/2 x 5' Galvanized iron pipe with brass cap, stamped as follows:

BTS	Sugar maple stump	N36W	61 1/2 lks	S 478
	Red maple	S13 1/2 W	32 1/2 lks	T36N R11E
	Sugar maple	S56W	33 lks	

Dated at Rhineland, Wis., this 17th day of December, 1974.

Signature: *Philip T. Hansen* Title: *Registered Land Surveyor*
 (County Surveyor, Registered Land Surveyor, or other duly authorized official)
 Office of Registrar of Deeds, County of Oneida
 at 3:00 o'clock P.M. I hereby certify that the within instrument was filed in this office for record on the 1st day of October, 1975.

By: *John George Fisher* (Register of Deeds)

By: _____ Deputy

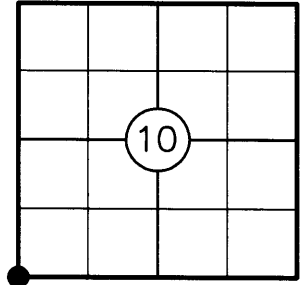
3611090000

U.S. PUBLIC LAND SURVEY MONUMENT RECORD

NOTE: THIS FORM IS INTENDED AND DESIGNED TO FULFILL ALL REQUIREMENTS OF WISCONSIN ADMINISTRATIVE CODE CHAPTER A-E 7.08 U.S. PUBLIC LAND SURVEY MONUMENT RECORD (3) (a)(b)(c)(d)(e)(f)(g)(h)(i). AN ADDITIONAL SHEET MAY BE ADDED IF NECESSARY TO CONFIRM WITH SAID REQUIREMENTS.

(a) CORNER LOCATION:

SW CORNER OF SECTION 10
 TOWNSHIP 36 NORTH
 RANGE 11 EAST
 TOWN OF MONICO
 COUNTY OF ONEIDA



(b) HISTORY OF ORIGINAL CORNER:

ORIGINAL SURVEYOR: WILLIAM E. DAUGHERTY
 DATE OF SURVEY: COMMENCED JULY, 1859
 COMPLETED AUGUST, 1859

ORIGINAL BEARING TREES: 12" BIRCH - S88°E, 20 LKS.
 12" BIRCH - N46°W, 21 LKS.

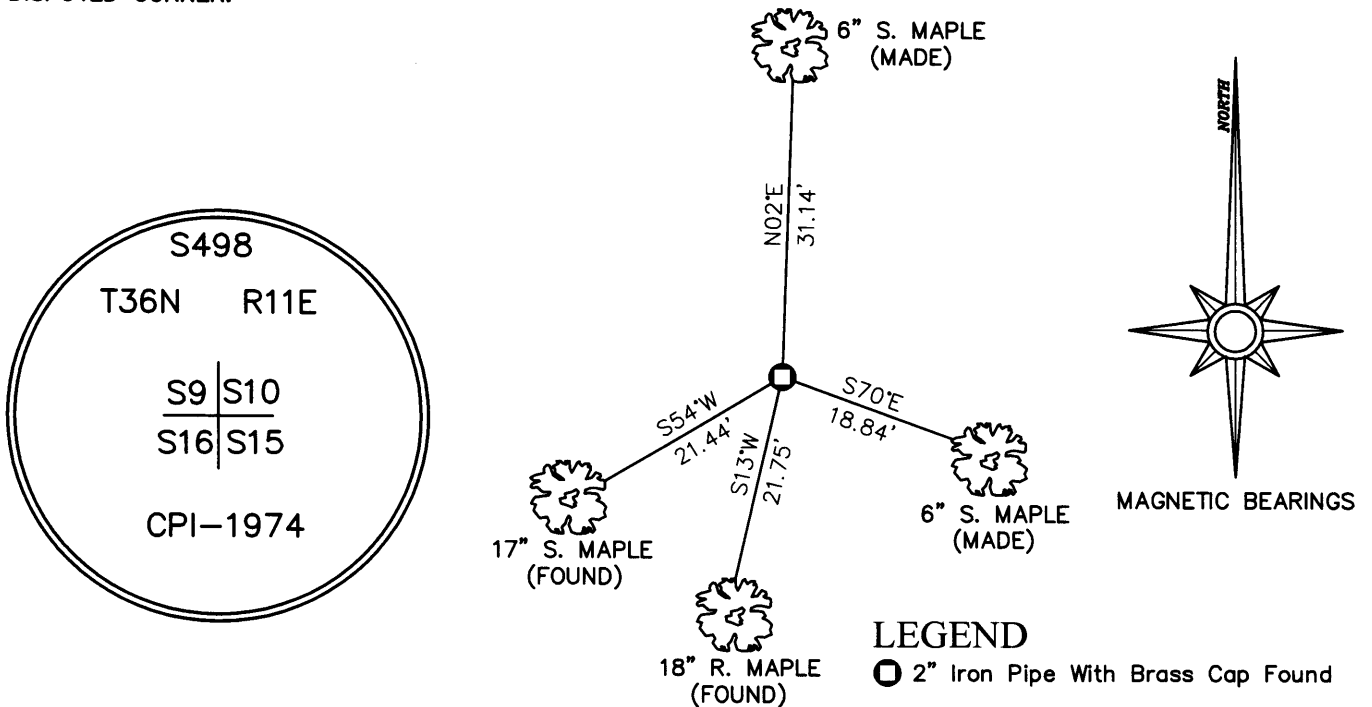
(f)(g)(h) DESCRIPTION OF MONUMENT FOUND AT THIS CORNER AND IF IT WAS ACCEPTED STATE ALL EVIDENCE (MATERIAL, TESTIMONIAL, OCCUPATIONAL, PLATS, RECORDS, OTHER MONUMENTS) USED AS A BASIS FOR ESTABLISHING LOCATION. IF REESTABLISHING THROUGH LOST CORNER PROPORTIONATE METHODS, INDICATE ALL MONUMENTS, DISTANCES, AND DIRECTIONS USED TO ESTABLISH. INDICATE TYPE OF MONUMENT AND SIGN POST FOUND OR SET.

1952: H.C. LAWRENCE RECOVERED AN IRON PIPE AND TWO BT'S OF UNKNOWN ORIGIN AS PART OF A RETRACEMENT SURVEY. HE ACCEPTED THIS POSITION AND SET A 5" X 5" CEDAR POST AT THE CORNER POSITION.

1974: PHILIP T. HANSEN FOUND LAWRENCE'S WOOD POST AND REPLACED IT WITH A 2" DIA. BRASS CAPPED IRON PIPE AND MADE NEW BT'S.

2005: I FOUND HANSEN'S MONUMENT AND BT'S IN GOOD CONDITION. I MADE NEW TIES AS SHOW BELOW AND SET A CARSONITE POST 1' WEST.

(c)(d)(e) PLAN VIEW OF CORNER WITH TIES TO AT LEAST FOUR WITNESSES. IF IN DISAGREEMENT WITH PREVIOUSLY ESTABLISHED CORNER, SHOW THE DISTANCES BETWEEN THE TWO CORNERS AND ALSO INDICATE THE TIE TO THE DISPUTED CORNER.



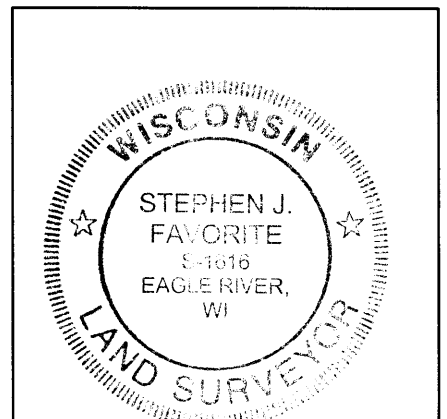
NOTES:

- 1) ALL DISTANCES ARE MEASURED TO NAIL ON SIDE OF TREE
- 2) NOT TO SCALE

I STEPHEN J. FAVORITE, REGISTERED LAND SURVEYOR NO. 1616, HEREBY CERTIFY THAT THE CORNER LOCATION ON THIS RECORD WAS REFERENCED BY ME OR UNDER MY DIRECTION AND CONTROL AND THAT THIS U.S. PUBLIC LAND SURVEY MONUMENT RECORD IS COMPLETE TO THE BEST OF MY KNOWLEDGE AND BELIEF.

Stephen J. Favorite
 SIGNATURE

12-27-05
 DATE



INDEX NO. 513

361109 00 00