

CERTIFIED LAND CORNER RESTORATION

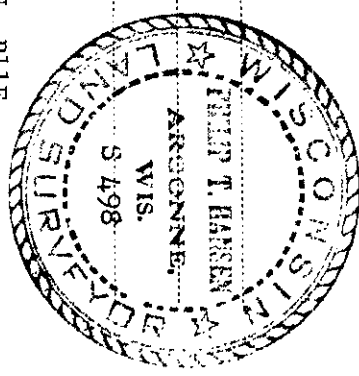
Index No. N-19

State of Wisconsin } ss.

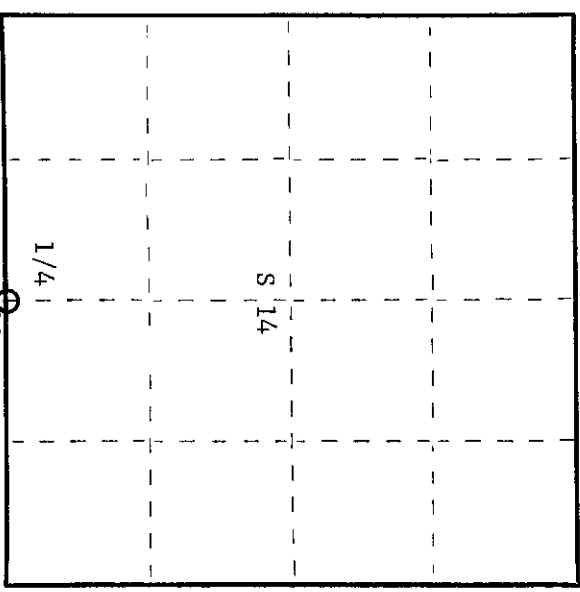
County of Oneida

I Phillip T. Hansen, do hereby certify that on the 11th day of December, 19 74, I found evidence of the 1/4 corner of Sec. 14, and Q3 Township 36 North, Range 11 East, Fourth Principal Meridian, as described hereon; and that from this evidence I established a new monument and accessories as described hereon to perpetuate the original location of this corner.

Resident witnesses:



T36N, R11E



○ = Corner monument restored.

History of original corner establishment:
Original corner established by Wm. E. Daugherty, Gov't Deputy Surveyor in 1859

Aspen 6" N10E 5 lks.
Aspen 6" S45W 12 lks.

No record of resurvey by county surveyors.
H.C. Lawrence, Reg. Surveyor established this corner in 1956. From his notes he states that he ran from Sec. Corner 14-15-22-23 East 87.34 chains to intersect Sec. Corner 13-14-23-24, 31 lks. North. Set 1/4 corner equidistant between sec. corners at 43.67 chains and 10 lks. South of random line. Set 4" cedar post with NBT's. Tamarack 6", N40W, 50 lks.; Aspen 7" S12E, 14-1/2 lks.

Description of corner evidence found:
Recovered H.C. Lawrence's 4" cedar post in fair condition.
Recovered old BT tamarack (dead) 7" N44W 50 1/2 lks. scribed 1/4 S14 BT and aspen stump 7" S99E 15 lks. scribed BT

Description of monument and accessories I established to perpetuate the original location of this corner.

Set new 2-1/2" x 5' galvanized iron pipe with brass cap stamped as follows -

New BT Black spruce 6" S74W 18 1/2 lks. scribed 1/4 BT T36N, R11E

S 14
1/4 ———
S 23
CPI-1974

Dated at Rhineland, Wis., this 16th day of June, 19 75.

Signature Phillip T. Hansen Title Registered Land Surveyor Registration No. S-498
(County Surveyor, Registered Land Surveyor, or other duly authorized official)

Office of Register of Deeds, County of Oneida at 1st day of October, 19 75
at 3:00 o'clock P. M. I hereby certify that the within instrument was filed in this office for record on the

Doris Terape Tuelke
(Register of Deeds)

By _____ Deputy

060009

U.S. PUBLIC LAND SURVEY MONUMENT RECORD

State of Wisconsin

County of: **ONEIDA** }

I, **DANIEL K. PLEOGER**, do hereby certify that on the 15th day of February, 2000,
I found evidence of the 1/4 corner between sections 14 and 23
 Township **36 North**, Range **11 East**, Fourth Principal Meridian, as described hereon;
 and made new accessories as described hereon to perpetuate the original location of this corner:

Description of original monument and accessories and subsequent restorations:

Wm. Daugherty, July, 1859.
 40.05 chains. Set 1/4 section post.
 W. Spruce 8" S70E 18 lks.
 W. Spruce 6" N79E 23 lks.

B.F. Dorr, December 18, 1906.
 Did not find 1/4 post. Dorr apparently established the corner by proportion. Dorr measured 87.36 chains on the section line.

H.C. Lawrence, 1955?
 Lawrence recovered Dorr's NE corner of section 23, and the W 1/6 corner between 14 and 23. He used the found corners to reestablish the NW corner of section 23. He set the 1/4 corner between 14 and 23 by proportion. Set 4" cedar post.
 Tamarack 6" N40W 50 lks.
 Aspen 7" s12E 14 1/2 lks.

Phil Hansen, December 12, 1974.
 Found Lawrence's post and bearing trees. Set a 2 1/2" x 5' galvanized iron pipe with brass cap.
 Black spruce 6" S74W 18 1/2 lks.

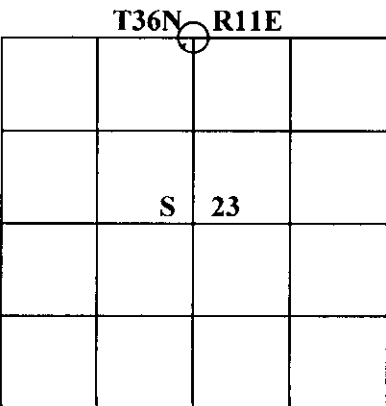
EVIDENCE FOUND AND JUSTIFICATION FOR LOCATING CORNER AS SHOWN:

I found Hansen's 2" iron pipe with brass cap. The monument was loose and projected 30" above ground.

All old bearing trees are down.

I reset the found monument so that it projects 24". The corner is on the east side of an island in a swamp.

I referenced the corner as shown on the drawing on the reverse side.



Resident witnesses

Dated at Winter, Wisconsin, this 8th day of January, 2001.

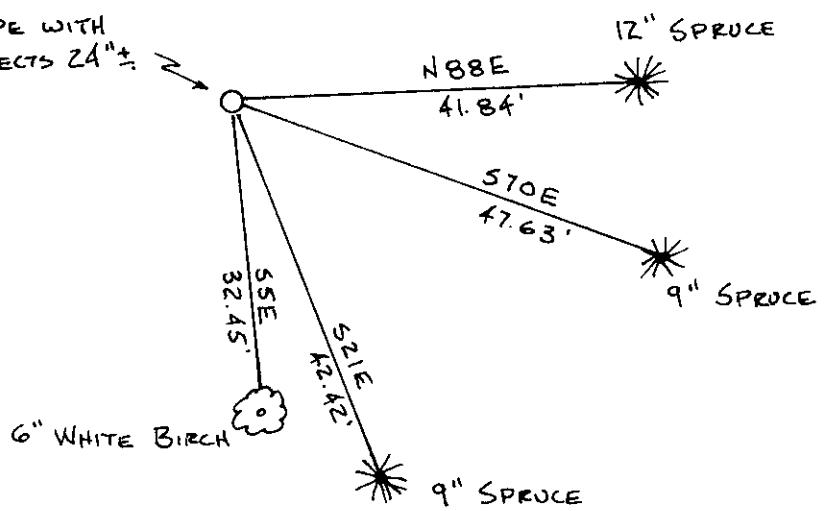
Signature Daniel K. Pleoger Title **Registered Land Surveyor**
 Surveyors Registration No. **1537**

Office of _____ County of _____

I hereby certify that the within instrument was filed in this office for record on the _____ day of _____ 19____, and was filed in Book No. _____ Page No. _____ of County Records.

Signature _____ Title _____

FOUND 2" IRON PIPE WITH
BRASS CAP, PROJECTS 24"±



REGISTER OF DEEDS OFFICE
CREIDA COUNTY, WIS.
FEB 26 2001
At _____ M
THOMAS M. LEIGHTON
REGISTER OF DEEDS