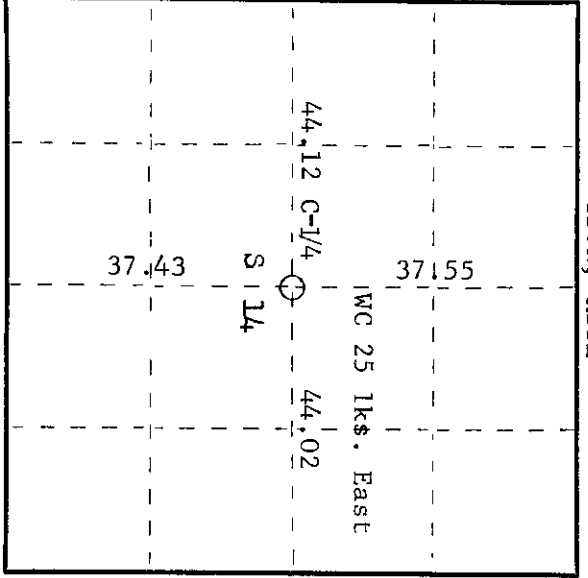
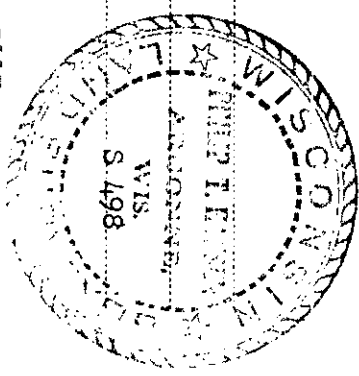


State of Wisconsin

County of Oneida } ss.

I, Philip T. Hansen, do hereby certify that on the 31st day of December, 1974, I found evidence of the corner of Section 14, Township 36 North, Range 11 East, Fourth Principal Meridian, as described hereon; and that from this evidence I established a new monument and accessories as described hereon to perpetuate the original location of this corner.

Resident witnesses:



○ = Corner monument restored.

History of original corner establishment:

Original corner established by someone, no notes available. H.C. Lawrence's retracement survey of 1956 states that he recovered an old post in an old log road, also old BT. He established the E-1/4 corner between Sections 13 and 14, equidistant between the section corners as Dorr's notes did not specify that his 1/4 Corner was original. He ran the E-W 1/4 line, intersected N-S 1/4 line and corrected to true position. Set 5" cedar post which fell in old woods road. Established witness corner, 25 lks. East of corner. Established new BT's - Balsam 5" N85°W 38 lks. Balsam 5" S2°W 38 lks.) To true position of corner

Description of corner evidence found:

Recovered 5" cedar post, squared and scribed G-1/4 S14 WC 25 lks. E. in fair condition
Recovered old BT 5" balsam N85°W 38 lks. - (fallen down) scribed S14 BT

Description of monument and accessories I established to perpetuate the original location of this corner.

Set 2-1/2" x 5" galvanized iron pipe with brass cap, in place of the 5" cedar, stamped as follows - S498
New BT. White pine 13" N85E 71 links Scribed G-1/4 WC BT
T36N R11E
WC 25 lks. E
+ S14
C-1/4
CPI-1974

Dated at Rhineland, Wis., this 16th day of June, 1975.

Signature: *Philip T. Hansen* Title: Registered Land Surveyor Registration No. S-498
(County Surveyor, Registered Land Surveyor, or other duly authorized official)

Office of Register of Deeds, County of Oneida, at 300 o'clock P. M. I hereby certify that the within instrument was filed in this office for record on the 1st day of October, 1975.

Donna George Fuchs
(Register of Deeds)

By: Deputy

361142020