

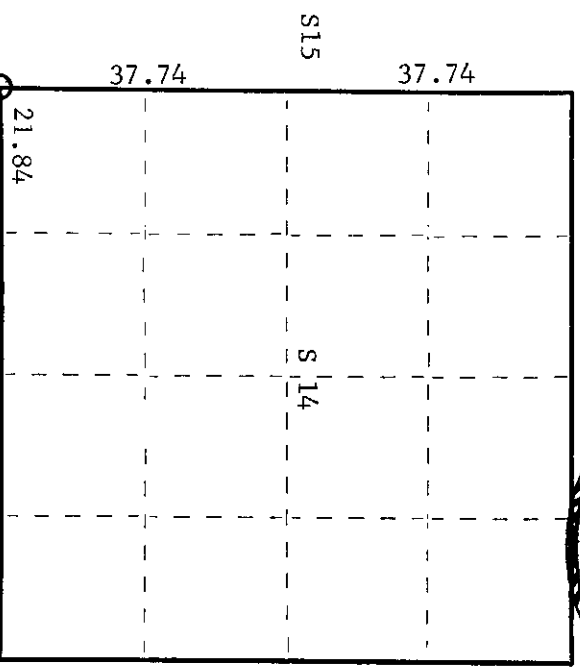
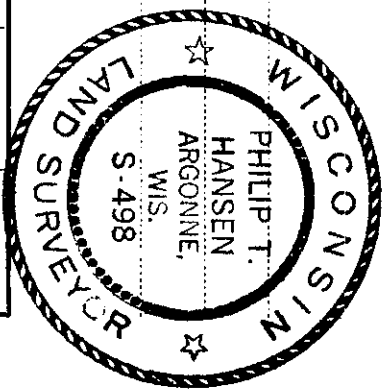
CERTIFIED LAND CORNER RESTORATION

Index No. **N-17**

State of Wisconsin } ss.
 County of Oneida

I Philip T. Hansen 27th, do hereby certify that on the 19 75 day of January 19 75, I found evidence of the Section Corner corner of 14-15-22 and 23 Township 36, North, Range 11 E, Fourth Principal Meridian, as described hereon; and that from this evidence I established a new monument and accessories as described hereon to perpetuate the original location of this corner.

Resident witnesses:



○ = Corner monument restored.

History of original corner establishment:

Original corner established by Wm. E. Dougherty, Government Deputy Surveyor, in 1859.
 Tamarack 6" N57°W 6 links
 Tamarack 12" S74°E 11 links
 Corner established by H.C. Lawrence, Registered Land Surveyor, during his retracement survey of 1956 from D.H. Vaughan's survey between Sec. 22 and 23, 89.74 chains and B.F. Dorr's W-1/16 corner of line between Sec. 14 and 23, a distance of 21.84 chains. He had recovered point of Dorr's post, buried in the muck, and recovered Dorr's old BT - Tamarack 18", S2°W, 10 links.
 Set new cedar post. Cedar stump 15" - N23°W, 38 links; Balsam 9", S89°E, 48 links.
 Description of corner evidence found:
 Recovered H.C. Lawrence's 4" cedar post, squared and scribed, S14-15-22-23 in fair condition. Recovered an old cedar stump - N18°W, 38.3 links. No other BT's visible.

Description of monument and accessories I established to perpetuate the original location of this corner.

Replaced wooden stake with 2-1/2" x 5' galvanized iron pipe w/brass cap stamped -

- NBT's - White birch 6" S57°E 119.6 links scribed SC BT
- White birch 6" North 43 links scribed SC BT
- S498 T36N R11E
- S15 | S14
- S22 | S23
- CPI-1975

Dated at Rhinelander, Wis. this 22 day of May, 19 75.

Signature *Philip T. Hansen* Title Registered Land Surveyor Registration No. S-498
 (County Surveyor, Registered Land Surveyor, or other duly authorized official)

Office of Register of Deeds, County of Oneida, I hereby certify that the within instrument was filed in this office for record on the 1st day of October, 1975 at 3:00 o'clock P.M.

Terrie Lange Jueler
 (Register of Deeds)

By: Deputy

00005119M

U.S. PUBLIC LAND SURVEY MONUMENT RECORD

State of Wisconsin

County of: **ONEIDA** }

I, **DANIEL K. PLEOGER**, do hereby certify that on the 26th day of June, 2000,
I reestablished the corner of sections 14, 15, 22, 23
 Township **36 North**, Range **11 East**, Fourth Principal Meridian, as described hereon;
 and made new accessories as described hereon to perpetuate the original location of this corner:

Description of original monument and accessories and subsequent restorations:

Wm. Daugherty, July, 1859.
 80.00 chains. Set post.
 Tamarack 6" N57W 6 lks.
 Tamarack 12" S74E 11 lks.

B.F. Dorr, December 17, 1906.
 Found somebody's corner. Ran north and west lines of section 23.
 Tamarack 16 S18E 11 lks.
 Spruce 8 S72 1/2W 8 lks.



H.C. Lawrence, November, 1955.
 Lawrence recovered Dorr's NE corner of section 23, and the W 1/6 corner between 14 and 23, and the SW corner of section 23. He used the found corners to reestablish the NW corner of section 23. Set the corner 89.74 chains north of the SW corner and 21.84 chains west of the W 1/16 corner, based on Dorr's 1906 survey notes.
 Set new 5" cedar post.

Cedar stump 15" N23W 38 lks. (now a rotted stump)
 Balsam 9" S89E 48 lks. (now a rotted stump)
 Tamarack 5" S28W 75 lks. (down)
 Spruce 5" N45E 49 lks. (now a rotted stump)

Phil Hansen, January 27, 1975. Certified Land Corner Restoration.
 Found Lawrence's 4" cedar post and old cedar stump BT. Set 2 1/2" x 5' galvanized iron pipe with brass cap.
 White birch 6" S57E 119.6 lks. (O.K.)
 White birch 6" North 43 lks. (gone)

EVIDENCE FOUND AND JUSTIFICATION FOR LOCATING CORNER AS SHOWN:

I found Hansen's 2" iron pipe with brass cap, and bearing trees as noted above. I did not accept the position of the found monument.

I agree with the method which Lawrence used to reestablish the section corner. However, it appears that Lawrence made an error when setting the post from his random lines because the position of the found monument does not fit his notes.

I reestablished the section corner from Dorr's notes. I extended the bearing of the line between Dorr's NE corner of section 23 and his W 1/6 corner between 14 and 23, Dorr's record distance of 21.84 chains. The distance south to the SW corner of section 23 is 5918.76 feet. Dorr's and Lawrence's record distance is 5922.84 feet.

I set a 2 1/2" x 42" aluminum monument, projecting 18" above ground. Hansen's 2" iron pipe with brass cap is S14-22-46W, 20.25 feet. I referenced the corner as shown on the drawing on the reverse side.

T36N		R11E	
	S	23	

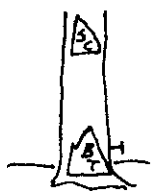
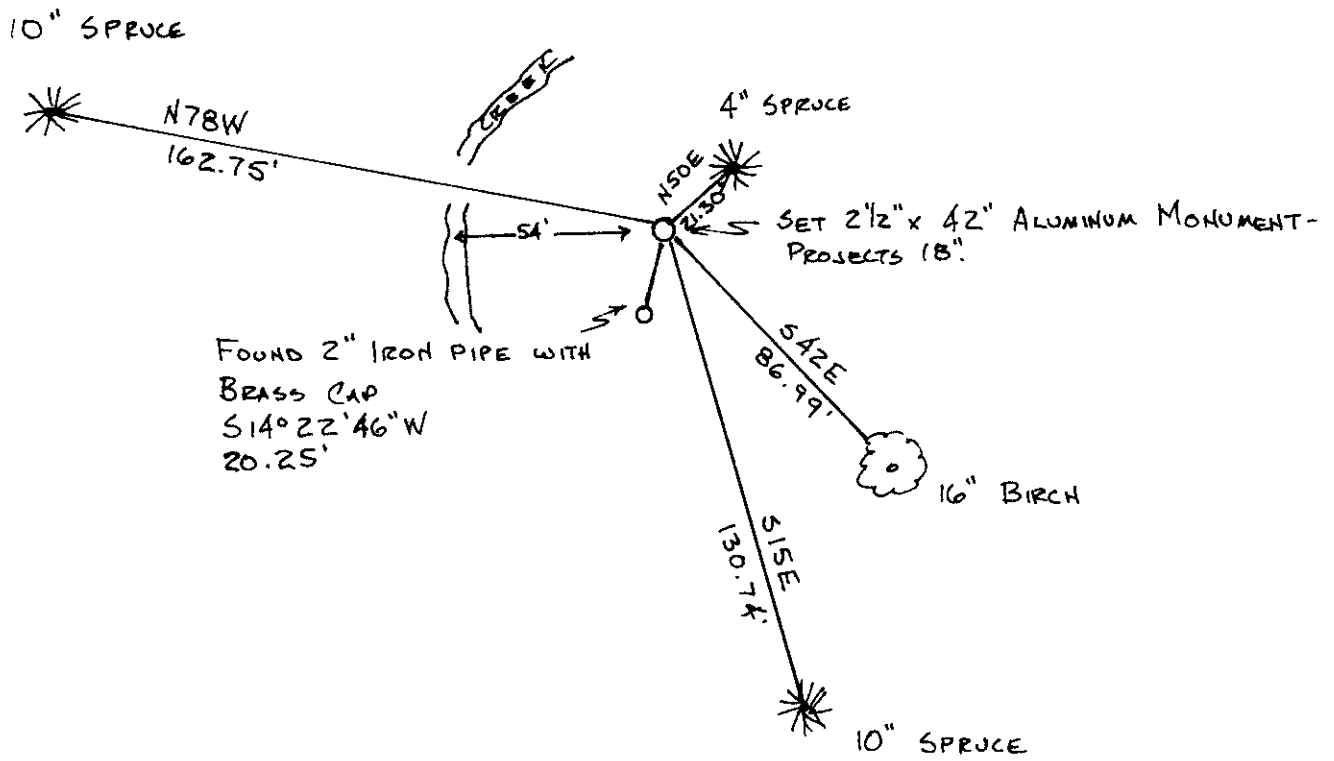
Resident witnesses
 Dated at Winter, Wisconsin, this 8th day of January, 2001.

Signature Daniel K. Pleoger Title **Registered Land Surveyor**
 Surveyors Registration No. **1537**

Office of _____ County of _____

I hereby certify that the within instrument was filed in this office for record on the _____ day of _____ 19_____, and was filed in Book No. _____ Page No. _____ of County Records.

Signature _____ Title _____



MEASURED TO 60d NAIL
IN BTS.

REGISTER OF DEEDS OFFICE
CHEROKEE COUNTY, WIS
FEB 26 2001
At _____ M
THORNTON LEIGHTON
REGISTER OF DEEDS