

CERTIFIED LAND CORNER RESTORATION

Index No. K-5

State of Wisconsin

County of Oneida } ss.

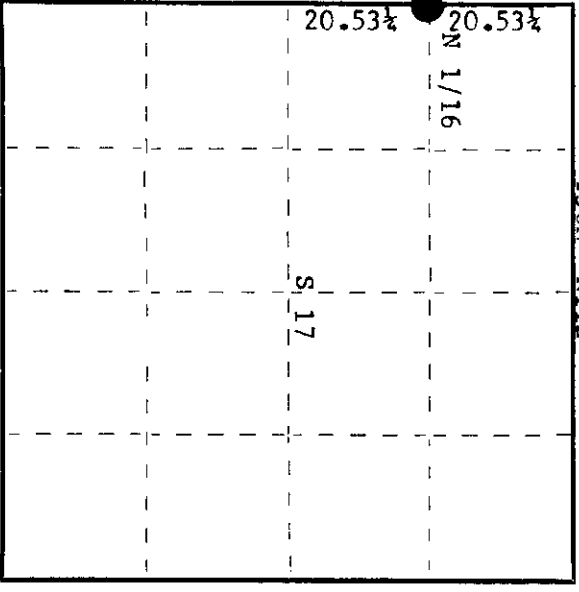
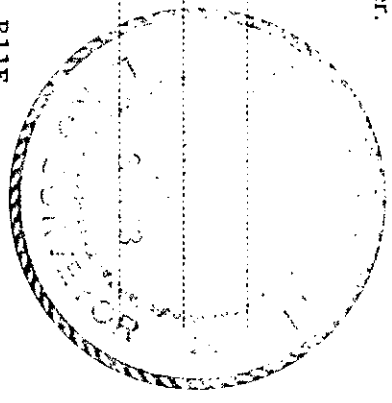
I, Phillip T. Hansen, do hereby certify that on the 5th day of January, 1979, I found evidence of the N 1/16 corner of Section 17 & 18 Township 36, North, Range 11 East, Fourth Principal Meridian, as described hereon; and that from this evidence I established a new monument and accessories as described hereon to perpetuate the original location of this corner.

Resident witnesses:

Glen Barker

Jim Clafflin

Herb Wagoner



○ = Corner monument restored.

History of original corner establishment:

Corner established by Goddard and Crew, Ripco surveyors, in 1958. Ran random line south from section corner 7, 8, 17 and 18 bearing 172° 14' magnetic, 82.13 chains to close out 24 1/2 links east of section corner. Set N 1/16 at 20.53 1/2 chains 6 1/2 links west. Marked NBT's - W.Fine 20" S34°W 65 links R. Maple 3" N48°E 33-3/4 links

Description of corner evidence found:

Recovered 3/4" iron pipe with 2" square brass cap in good condition, projecting 18" above ground, cap stamped:  
Recovered OBT's -  
W.Fine 20" (24") S34°W 65 links, scribed SIP, N 1/16 BT. N 1/16  
Maple 3" (6") N48°E 33-3/4 links, scribbling grown over. S18 + S17  
RIPCO

Description of monument and accessories I established to perpetuate the original location of this corner.

Left monument in place as recovered.  
No additional accessories established.

Dated at Rhinelander, Wis. this 10th day of January, 1979

Signature: Phillip T. Hansen Title Registered Land Surveyor Registration No. S-498  
(County Surveyor, Registered Land Surveyor, or other duly authorized official)

Office of Register of Deeds, County of Oneida, I hereby certify that the within instrument was filed in this office for record on the 25th day of January, 1979 at 1:15 o'clock P. M.

Doris George Fischer  
(Register of Deeds)

By: \_\_\_\_\_ Deputy