

CERTIFIED LAND CORNER RESTORATION
U.S. PUBLIC LAND SURVEY MONUMENT RECORD

Index No. R-15

State of Wisconsin }
County of Oneida } ss.

I James L. Will, do hereby
certify that on the 13th day
of April 1984, I found
evidence of the North 1/4
corner of Section 27
Township 36 North, Range
11 East, Fourth Principal Meridian,

as described hereon; and that from this evidence
I established a new monument and accessories
as described hereon to perpetuate the original
location of this corner.

Resident witnesses:

Eric Zyhowski
Kip W. Soder

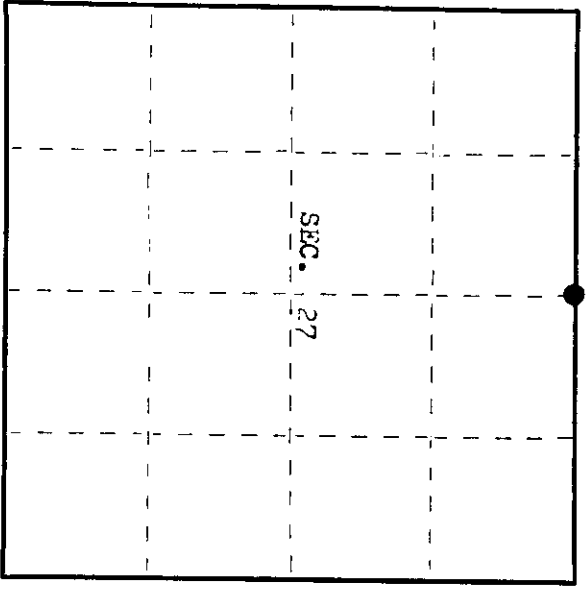
Original corner was established in the course of the subdivision of T 36 N, R 11 E,
in 1859, by William E. Daugherty, Deputy Surveyor.

Original B.T.'s:
7" Tamarack N 68° E 17 lks.
8" Tamarack S 36° W 27 lks.

Description of corner evidence found:
Found wood post in a rock pile, set by H.C. Lawrence in the 1950's.
Also found Lawrence's B.T.'s:
26" W. Pine N 31° E 51.10 ft. (Distances are to a nail in the side
20" Maple Stump N 62° W 46.55 ft. of the bearing tree.)

Description of monument and accessories I established to perpetuate the original location of this corner.
Replaced wood post with a 2 1/2"x30" magnetic aluminum capped Oneida County monument.
Blazed and scribed the following new bearing trees:

7" Maple	S 64° W	12.40 ft.	(Distances are to a nail in the side
8" Maple	S 32° E	17.00 ft.	of the bearing trees.)
5" Maple	N 66° W	44.27 ft.	



● = Corner monument restored.

Dated at Rhinelanders Wis., this 7th day of May, 1984.

Signature James L. Will Title Registered Land Surveyor Registration No. S-1410
(County Surveyor, Registered Land Surveyor, or other duly authorized official)

Office of Register of Deeds, County of Oneida
at 400 o'clock P.M. I hereby certify that the within
instrument was filed in this office for record on the 11 day of June, 1986

By Doris Verag (Registered of Deeds) Chris Deputy

0108441173

(e) Describe any material discrepancy between the location of the corner as restored or reestablished and the location of that corner as previously restored or reestablished by distance and direction. Show the discrepancy on the plan view drawing under (d), above. Show the distances between the corner as previously restored or reestablished and (1) the corner as restored or reestablished, and (2) to at least 2 of the witness monuments shown on the drawing in (d), above.

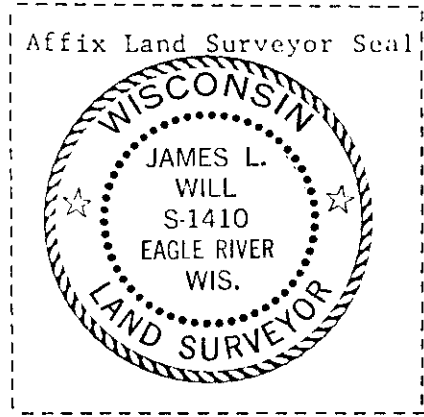
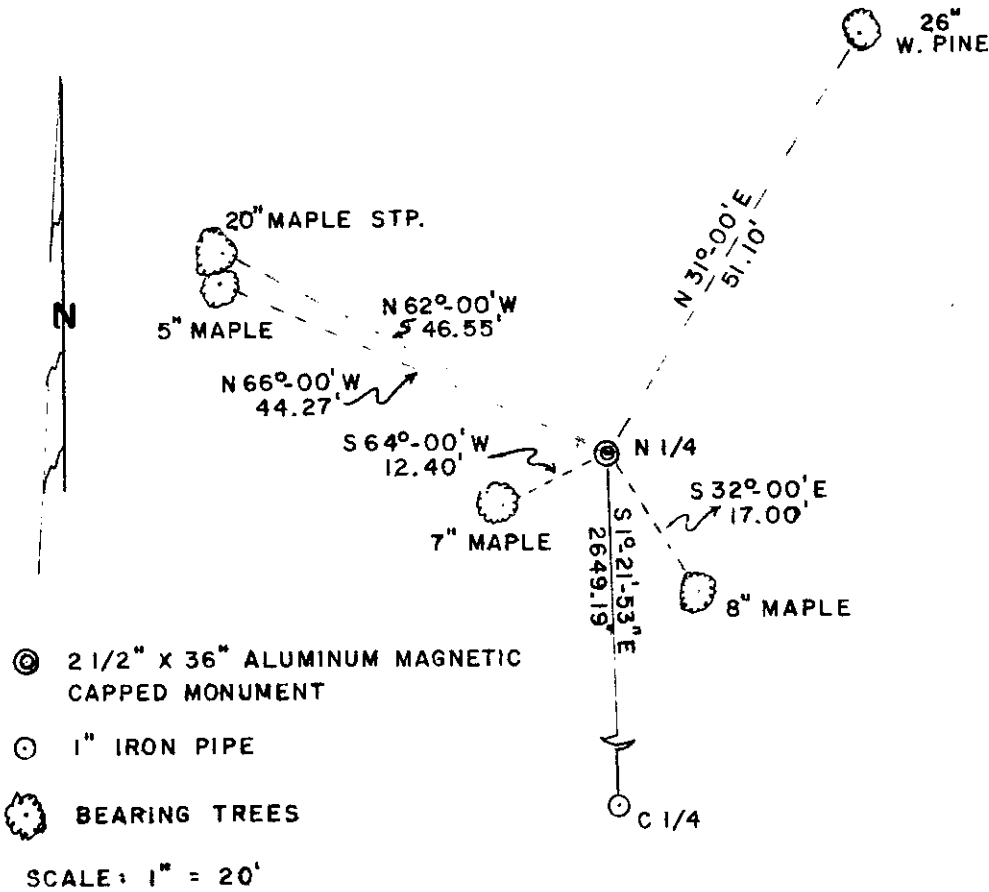
None.

See sketch below.

(f) Was the corner restored through acceptance of (1) an obliterated evidence location, or, (2) a found perpetuated location?

Corner was restored through acceptance of a found perpetuated location.

(g&h) Was the corner reestablished through lost corner proportionate methods? If so, show the method, including the directions and distances to other public land survey corners used as evidence or used for proportioning in determining the corner location?



(i) I, James L. Will R.L.S. #1410
 (type or print name) certify that the corner location shown on this record was determined by me or under my direction and control and that this U.S. Public Land Survey Monument Record is correct and complete to the best of my knowledge and belief.

James L. Will
 Signature

May 7, 1984
 Date