

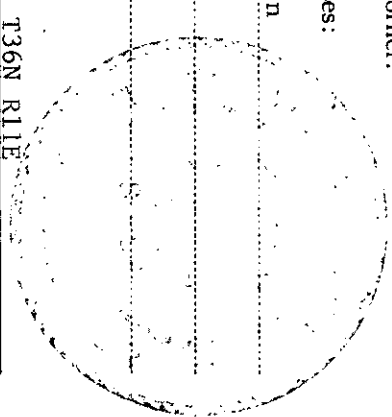
CERTIFIED LAND CORNER RESTORATION

Index No. **P-17**

State of Wisconsin } ss.
 County of Oneida }

I, Philip T. Hansen, do hereby certify that on the 16th day of January, 1976, I found evidence of the Quarter corner of Sections 22 and 23 Township 36, North, Range 11, East, Fourth Principal Meridian, as described hereon; and that from this evidence I established a new monument and accessories as described hereon to perpetuate the original location of this corner.

Resident witnesses:
 Jim Claflin
 Tom Jewell

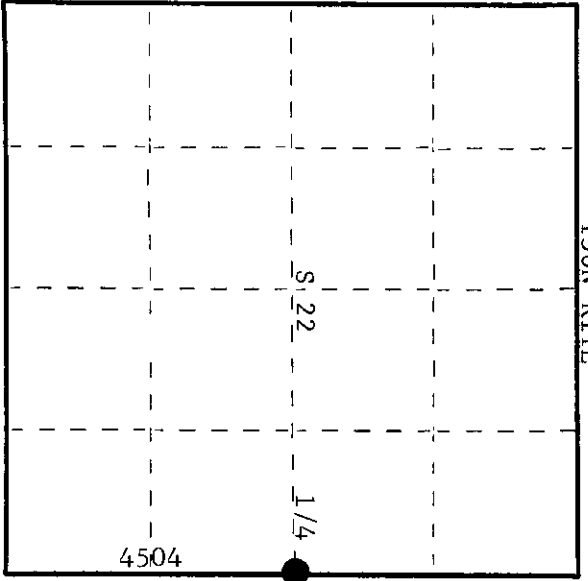


History of original corner establishment: Original corner established by William E. Dougherty, Deputy Surveyor, in 1859, from which aspen 6" bears N41°W, 8 lks. and aspen 6" bears S49°E, 10 lks. Corner recovered and remarked by D.H. Vaughan, County Surveyor in 1901. Corner recovered by H.C. Lawrence, Registered Land Surveyor in 1948. He found old post broken off and buried in leaves. Set new post in old post hole and marked NBT's - W. birch 5", N46°W, 39 lks., twin maples, 6" and 8", N70°E, 35 lks., and X on boulder S51°E, 41 lks.

Description of corner evidence found: Recovered 5" cedar post, squared and scribed, 1/4S, S22, S23. Also found pieces of an old post and a 1" iron shaft, 24" long, with a gear on top driven in beside the wood post.

Recovered OBT's - W. birch 5" (9") N46°W (N42°W) 39 lks. scribed 1/4 S22
 Twin maples 6" & 8" N70°E (N72°E) scribed 1/4 S23
 Boulder (10" & 12") The 10" maple has been cut off above the scribe marks. S51°E 41.0 lks. to 1" iron rod driven in crack in boulder.

Description of monument and accessories I established to perpetuate the original location of this corner.
 Replaced 5" cedar post with 2-1/2" Berntsen Federal Monument, Aluminum, with magnet installed in cap and base. Cap stamped - S498
 Pipe projects 18" above ground. T36N R11E
 Set post and iron shaft alongside of new pipe.
 NBT - Sugar 7" due north 32.1 lks. scribed 1/4 BT
 1/4 S22 | S23
 1975



○ = Corner monument restored.

Dated at Rhineland, Wis., this 20th day of January, 1976.
 Signature: *Philip T. Hansen* Title: Registered Land Surveyor Registration No. S-498
 (County Surveyor, Registered Land Surveyor, or other duly authorized official)

Office of Register of Deeds, County of Oneida
 at 10:30 o'clock P.M. 9th day of November, 1976
Lois George Tucker
 (Register of Deeds)

By: _____ Deputy

3611222000