

State of Wisconsin

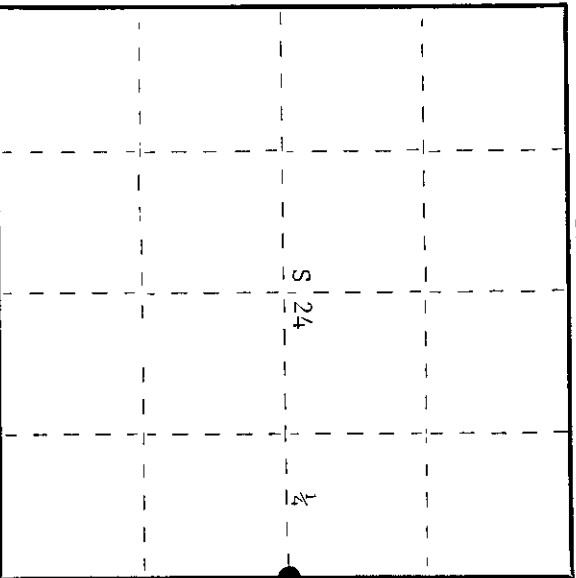
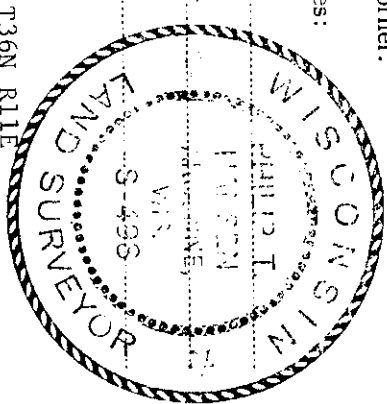
County of Oneida } ss.

I Phillip T. Hansen, do hereby certify that on the 6th day of October, 1975, I found evidence of the Quarter corner of Sections 19 and 24 Township 36 North, Range 11 and 12 East, Fourth Principal Meridian, as described hereon; and that from this evidence I established a new monument and accessories as described hereon to perpetuate the original location of this corner.

Resident witnesses:

Glen Barker

Jim Claflin



○ = Corner monument restored.

History of original corner establishment: Original corner established by Alfred Millard, Gov. Deputy Surveyor, in 1858, from which Aspen 12" bears N40°E 8 links, and Aspen 12" bears S30°W 27 links.

Corner restored by B.F. Dorr, Oneida County Surveyor, in 1899. Set new post and marked NBT - Pine 12" N59 1/2°E 41 1/2 links.

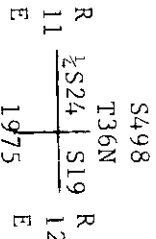
Corner recovered by H.C. Lawrence, Registered Land Surveyor, in 1953. Recovered old post and OBT - Pine 12" N59 1/2°E 41 1/2 links, blown down and rotten.

Set new post, but did not mark NBT's.

Description of corner evidence found: Recovered 3" cedar post, squared and scribed 1/8 S 1/9 1/8 S 2/4 in poor condition.

No remains left of old Pine BT.

Description of monument and accessories I established to perpetuate the original location of this corner. Replaced 3" cedar post with 2 1/2" x 30" Bernsten, A-1 Federal Monument, aluminum post with magnet installed in cap and base. Post projects 6" above ground. Cap stamped -



Old post set up beside new pipe.

NBT's - R. oak 8" S21°W 89 links, scribed 1/4 BT.
R. maple 6" N11°E 49.1 links, scribed 1/4 BT.

Post and BT's painted blue.

Dated at Rhineland, Wis., this 13th day of October, 1975.

Signature: Phillip T. Hansen, County Surveyor, Registered Land Surveyor, or other duly authorized official. Title: Registered Land Surveyor. Registration No. S-498.

Office of Register of Deeds, County of Oneida. I hereby certify that the within instrument was filed in this office for record on the 5th day of December, 1975, at 10:10 o'clock A.M.

Donna Savage Kuehn (Register of Deeds)

By: Deputy

3611242000

State of Wisconsin

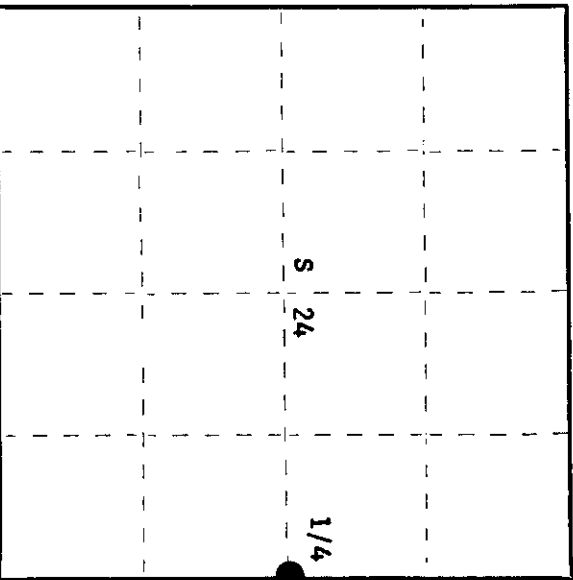
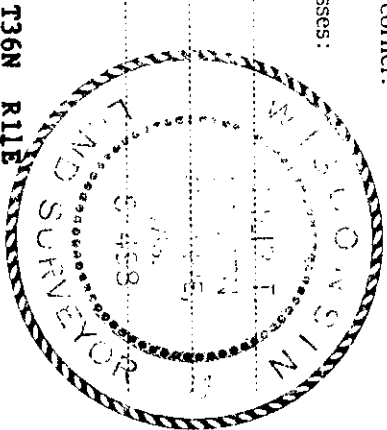
County of Oneida } ss.

I Phillip T. Hansen, do hereby certify that on the 6th day of October, 19 75, I found evidence of the Quarter corner of Sections 19 and 24 Township 36, North, Range 11 & 12 East, Fourth Principal Meridian, as described hereon; and that from this evidence I established a new monument and accessories as described hereon to perpetuate the original location of this corner.

Resident witnesses:

Glen Barker

Jim Claflin



○ = Corner monument restored.

History of original corner establishment:

Original corner established by Alfred Millard in 1858 from which aspen 12" bears N40°E, 8 links and aspen 12" bears S30°W, 27 links. Corner restored by B.F. Dorr, Oneida County Surveyor, in 1899. Set new post and marked BT: Pine 12" N59½°E 41-1/2 links. Corner recovered by H.C. Lawrence, Registered Land Surveyor, in 1953. Recovered old post and OBT: Pine 12" N59½°E 41-1/2 links, blown down and rotten. Set new post but did not mark NBT's.

Description of corner evidence found:

Recovered 3" cedar post, squared and scribed 1/4-S S5, 1/4-S S6 in poor condition. No remains left of old pine BT.

Description of monument and accessories I established to perpetuate the original location of this corner.

Replaced 3" cedar post with 2-1/2" x 30" Berntsen A-1 Federal Monument. Aluminum with magnet installed in cap and base. Post projects 6" above ground, cap stamped - Old post set up beside new pipe. S498
NBT's: R. oak 8" S21°W 89 links - scribed 1/4 BT. T36N
R. maple 6" N11°E 41.1 links - scribed 1/4 BT. R 11 1/4 S24 S19
Post and BT's painted blue. E 1975

Dated at Argonne, Wis., this 13th day of October, 19 75.

Signature Phillip T. Hansen Title Registered Land Surveyor Registration No. S-498
(County Surveyor, Registered Land Surveyor, or other duly authorized official)

Office of Register of Deeds, County of Oneida I hereby certify that the within instrument was filed in this office for record on the 6th day of February, 19 78 at 9:30 o'clock A. M.

Doris Leona Kuehn
(Register of Deeds)

By: _____ Deputy

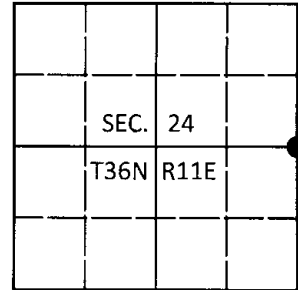
361124208

U.S. PUBLIC LAND SURVEY MONUMENT RECORD

Note: This form is intended and designed to fulfill all requirements of Wisconsin Administrative Code, Chapter A-E 7.08 U.S. Public Land Survey Monument Record (3)(a-i).

(a) CORNER LOCATION
1/4 Cor. of Secs. 19 & 24
Township 36 North
Range 11 & 12 East of the 4th P.M.
Town of Monico
County of Oneida

WISCRS - Oneida County
N: 146,419.12 USft
E: 357,432.72 USft
Datum: NAD 83(2011)
GNSS Method: RTN Offset
GNSS Control: WISCORS VRS



(b) HISTORY OF ORIGINAL CORNER ESTABLISHMENT

Original Surveyor: Original Accessories:
Date of Survey Commenced:
Completed:

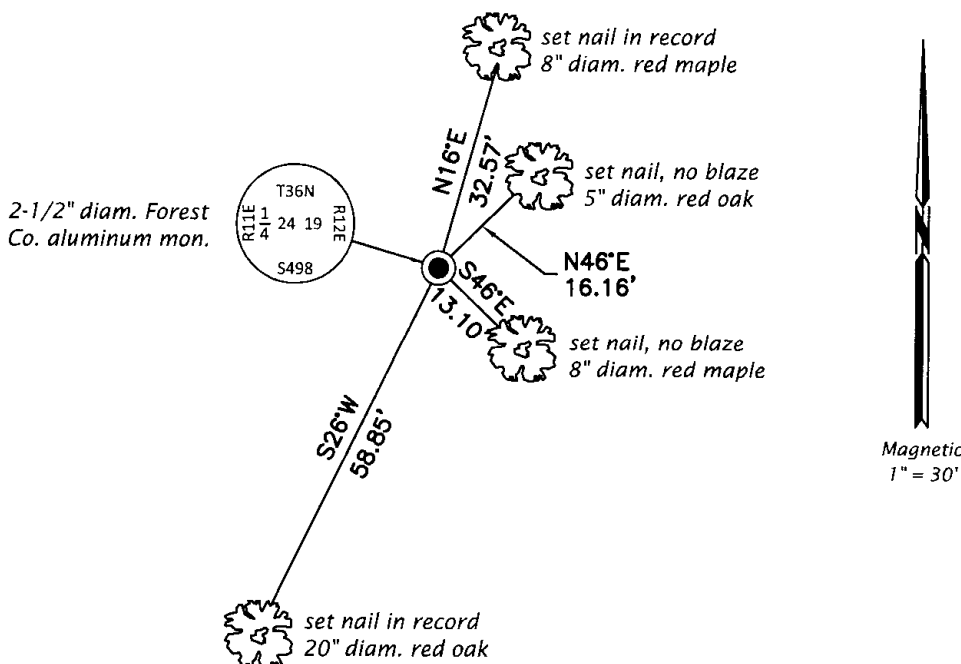
(b)(f)(g)(h) Description of monument found at this corner and if it was accepted, state all evidence (material, testimonial, occupational, plats, records, other monuments) used as a basis for accepting. If not accepted or if nothing was found, state evidence used as basis for establishing location. If re-established through lost corner proportionate methods, indicate all monuments, distances and directions used to establish. Indicate type of monument and sign post found or set.

This is a perpetuation of a previous USPLS Monument Record by Philip T. Hansen, RLS dated October 13, 1975 and filed in the office of the Oneida County Register of Deeds. A complete history of the corner can be found on the previous monument record. I accept the previous location as a true and faithful perpetuation or reestablishment of the original corner location and further perpetuate it as follows.

October 6, 2016: I found and accepted the record monument, a 2-1/2" diam. aluminum pipe with a Forest Co. aluminum cap projecting 6" above the ground surface. I found or established accessories as shown below and set a white vinyl sign post bearing East, 1 ft. dist.

The coordinate value shown has been verified by at least one of the following methods: 1) comparison to a previously GPS determined published value; 2) the value is the average of two or more GPS observations at a markedly different time; 3) one or more distances were measured back to the GPS observed corner from temporary GPS observed offset locations.

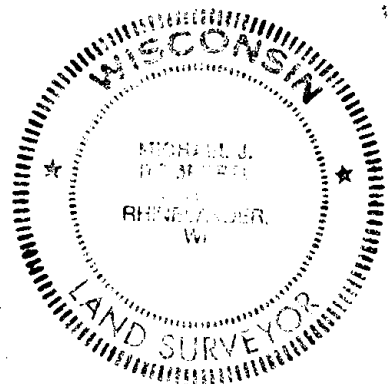
(c)(d)(e) Plan view of corner with ties to at least 4 witness monuments. If in disagreement with previously established corner, show the distances between the two corners and also indicate the ties to the disputed.



REGISTER OF DEEDS OFFICE ONEIDA COUNTY FILED

DEC 28 2016

AT O'CLOCK M
KYLE J. FRANSON REGISTER OF DEEDS



(i) I, Michael J. Romportl, Professional Land Surveyor No. S-1624, hereby certify that the corner location on this record was determined by me or under my direction and control and that this U.S. Public Land Survey Monument Record is correct and complete to the best of my knowledge and belief.

Michael J. Romportl Signature
12/23/2016 Date