

CERTIFIED LAND CORNER RESTORATION

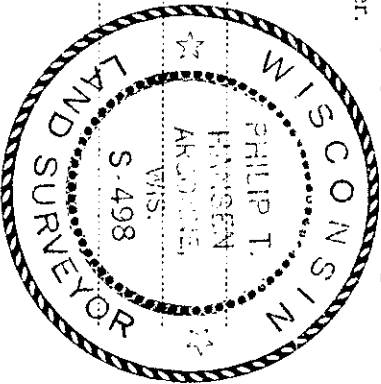
Index No. V-222

State of Wisconsin

County of Oneida } ss.

I Philip T. Hansen, do hereby certify that on the 2nd day of June, 1975, I found evidence of the W-1/16 corner of Sections 25 and 36 Township 36, North, Range 11 East, Fourth Principal Meridian, as described hereon; and that from this evidence I established a new monument and accessories as described hereon to perpetuate the original location of this corner.

Resident witnesses:



History of original corner establishment:
 Corner established by H.C. Lawrence, Registered Land Surveyor, in 1954. He ran the line between recovered section corners 25, 26, 35, and 36 to 1/4 corner between Section 25 and Section 36, a distance of 41.18 chains, to intercept the N-S 1/4 line 2.40 chains South at right angles. Set W-1/16 corner at 20.59 chains equidistant and 1.20 chains North at right angles. NBT - Norway stump 10", N22°E, 46½ links. B.O. Bearing of true line N89°20'E.

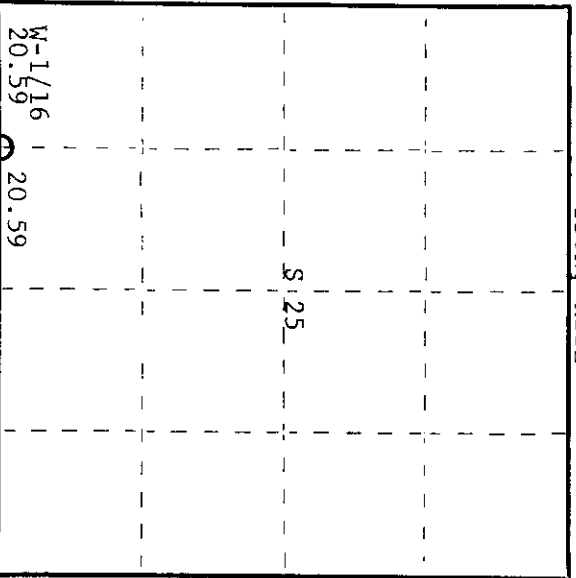
Description of corner evidence found:

Recovered 4" tamarack post, squared and scribed W-1/16 S25, W-1/16 S36, in fair condition.
 Recovered OBT Norway stump 10", N22°E, 76.5 links scribed B.O.

Description of monument and accessories I established to perpetuate the original location of this corner.
 Replaced 4" tamarack post with 1½" iron pipe with 2" brass cap stamped -

| | | | | |
|---------------------|-------|-------------|-----------------|------------|
| NBT's - Red pine 7" | S59°E | 107.4 links | scribed 1/16 BT | S498 |
| Aspen 7" | N51°W | 94.4 links | scribed 1/16 BT | T36N, R11E |
| | | | | W-1/16 |
| | | | | S 25 |
| | | | | S 36 |

CPI-1975



○ = Corner monument restored.

Dated at Rhineland, Wis., this 22nd day of July, 1975.

Signature Philip T. Hansen Title Registered Land Surveyor Registration No. S-498
 (County Surveyor, Registered Land Surveyor, or other duly authorized official)

Office of Register of Deeds, County of Oneida
 Instrument was filed in this office for record on the 1st day of October, 1975
 at 3:00 o'clock P. M.

Doris Terape Tucker
 (Register of Deeds)

By _____ Deputy

3611250030