

CERTIFIED LAND CORNER RESTORATION

Index No. V-18

State of Wisconsin }
 County of Oneida } ss.

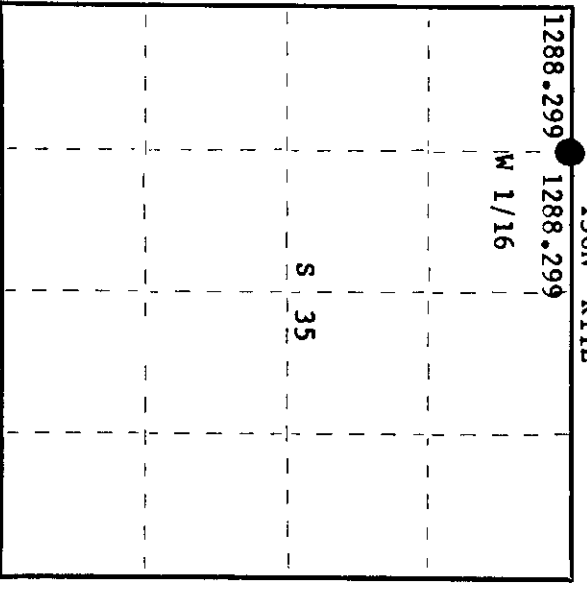
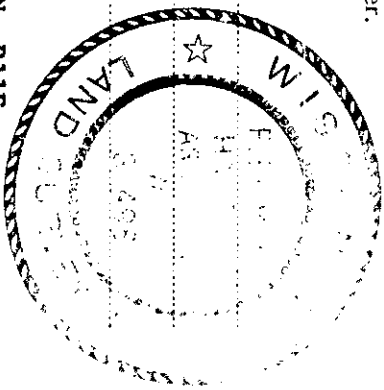
History of original corner establishment:
No records of previous corners.

I, Phillip T. Hansen, do hereby certify that on the 20th day of April, 1978, I ~~found~~ **established** the W 1/16 corner of Section 26 & 35 Township 36 North, Range 11 East, Fourth Principal Meridian,

as described hereon; and that from this evidence I established a new monument and accessories as described hereon to perpetuate the original location of this corner.

Resident witnesses:

- Glen Barker
- Jim Claflin
- Herb Wagoner



○ = Corner monument restored.

Description of corner evidence found:

No evidence of any corner recovered.
 Corner established by traverse and computation and proportionate measure.
 Ran traverse from previously established 1/4 corner to section corner 26, 27, 34 & 35.
 Computed distance - 2576.598 at bearing S 85° 34' 50" W. Set corner at 1288.299 feet intermediate.

Description of monument and accessories I established to perpetuate the original location of this corner.

Drove 1 1/2" x 18" iron pipe in the south wheel track of Pergande Road, 4" below the surface.
 Set a 1 1/2" iron pipe with 2" brass cap 40 feet north for witness corner.
 Monument projects 24" above ground. Cap stamped:
 Marked NBT's - Cherry 6" N46°E 98.15 feet
 W. Birch 6" S27°E 80.10 ft., scribed 1/16 BT.

S498
 T36N R11E
 W 1/16 S 26 W.C.
 S 40 ft.

Dated at Rhinelander, Wis., this 1st day of May, 1978.

Signature: Phillip T. Hansen Title: Registered Land Surveyor Registration No. S-498
 (County Surveyor, Registered Land Surveyor, or other duly authorized official)

Office of Register of Deeds, County of Oneida
 Instrument was filed in this office for record on the 15th day of May, 1978 at 2:00 o'clock P. M.

Dennis J. George
 (Register of Deeds)

By Joseph W. Garner Deputy

3611260030