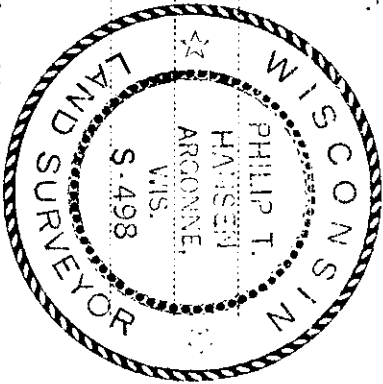


CERTIFIED LAND CORNER RESTORATION

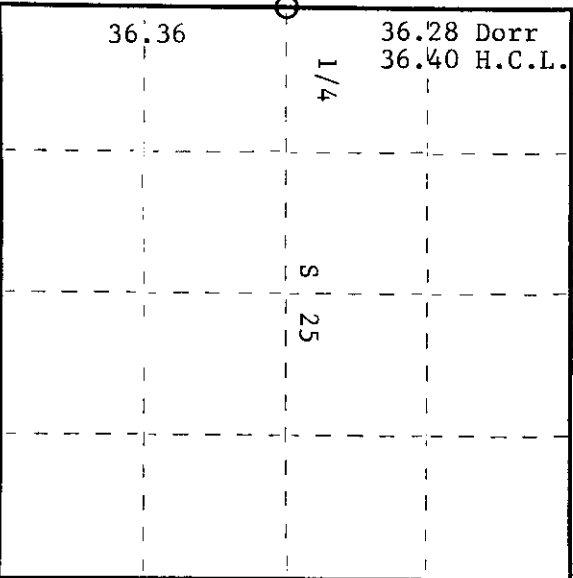
Index No. **7-21**

State of Wisconsin } ss.  
 County of Oneida

I Philip T. Hansen, do hereby certify that on the 30th day of June, 1975, I found evidence of the Quarter corner of Sections 25 and 26 Township 36 North, Range 11 East, Fourth Principal Meridian, as described hereon; and that from this evidence I established a new monument and accessories as described hereon to perpetuate the original location of this corner.



Resident witnesses:



○ = Corner monument restored.

CERTIFIED LAND CORNER RESTORATION

History of original corner establishment: Original corner established by Wm. E. Dougherty, Government Deputy Surveyor, in 1859 from which tamarack 10" bears N23°W 18 links and spruce 6" bears S45°W 33 links. Corner recovered by B.F. Dorr, County Surveyor, in 1899. Set new post from which tamarack 20" bears S57°W 26 links and tamarack 16" bears N40°W 18 links. Corner recovered and restored by H.C. Lawrence, Reg. Land Surveyor, in 1954. He found Dorr's old stake and recovered stumps of Dorr's BT's. Set new cedar post in old post hole which checks out with bearings and distance to Dorr's BT. Marked new BT's - cedar 8" S41½°W 30 links and cedar 14" N30°E 39 links.

Description of corner evidence found:

Recovered 5" cedar post, squared and scribed 1/4 S S25; 1/4 S S26, in good condition.

Recovered - Tamarack stump 18" N40°E 18 links - scribing not visible.

Tamarack stump 16" S57°W (S68°W) 26 links - scribed 1/4 S BT.

Cedar 8" (9") S41½°W 30 links (30.5 links) - scribed 1/4 S26 BT.

Cedar 14" (16") N30°E 39 links - scribed 1/4 S25 BT.

Description of monument and accessories I established to perpetuate the original location of this corner.

Replaced 5" cedar post with 2-1/2" iron pipe with brass cap stamped -

No additional accessories.

S498  
 T36N R11E  
 S26 | S25  
 ---  
 1/4  
 CPI 1975

Dated at Rhinelander, Wis. this 17th day of July, 1975.

Signature *Philip T. Hansen* Title Registered Land Surveyor Registration No. S-498  
 (County Surveyor, Registered Land Surveyor, or other duly authorized official)

Office of Register of Deeds, County of Oneida  
 Instrument was filed in this office for record on the 1st day of October, 1975  
 at 3:00 o'clock P.M.

*Doris Neugebauer*  
 (Register of Deeds)

By: Deputy

3611262000

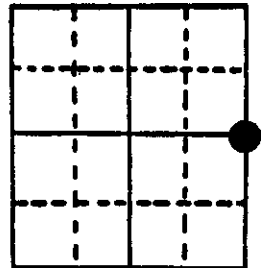
# U.S. PUBLIC LAND SURVEY MONUMENT RECORD

**Note:** This form is intended and designed to fulfill all requirements of Wisconsin Administrative Code, Chapter A-E 5.02, U.S. Public Land Survey Monument Record (3) (a) (b) (c) (d) (e) (f) (g) (h) (i). An additional sheet may be added if necessary to conform with said requirements.

(a) Corner location: Township 36 North  
 Range 11 East ~~West~~

Town/City/Village Monico

County Oneida

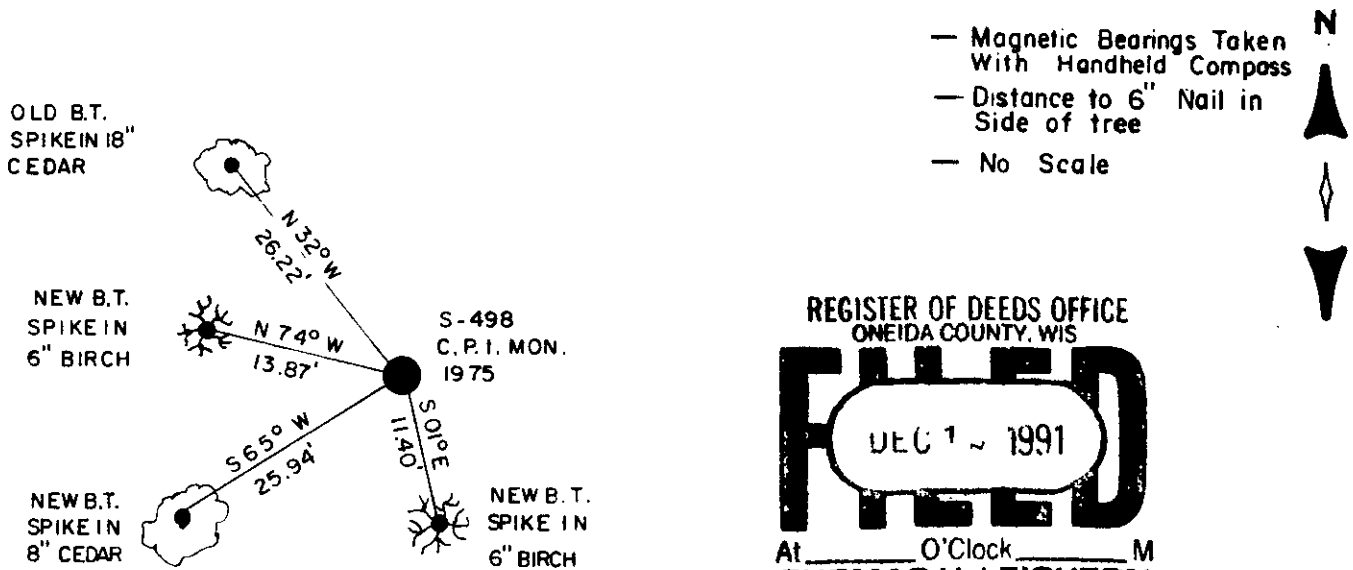


Section 26

(b) (f) (g) (h) Description of monument found at this corner and if it was accepted, state all evidence (material, testimonial, occupational, plats, records, other monuments) used as a basis for accepting. If not accepted or if nothing was found, state evidence used as basis for establishing location. If reestablished through lost corner proportionate methods, indicate all monuments, distances and directions used to establish.

- 1859 Daugherty North between 25 and 26 40.00 set corner B.T.'s Tam. 10" N 23 W 18 lks., Spruce 6" S 45 E 33 lks.
- 1975 Hansen discovered wood post and B.T.'s replaced with 2" capped pipe.
- 1991 W. Bandow found capped pipe and witnessed as shown below:

(c) (d) (e) Plan view of corner with ties to at least 4 witness monuments. If in disagreement with previously established corner, show the distances between the two corners and also indicate the ties to the disputed corner.



REGISTER OF DEEDS OFFICE  
 ONEIDA COUNTY, WIS.  
**FILED**  
 DEC 1 ~ 1991  
 At \_\_\_\_\_ O'Clock \_\_\_\_\_ M  
**THOMAS H. LEIGHTON**  
 REGISTER OF DEEDS

(i) I, William E. Bandow  
 (type or print name) certify that the corner location on this record was determined by me or under my direction and control and that this U.S. Public Land Survey Monument Record is correct and complete to the best of my knowledge and belief.

*William E. Bandow* 12-10-91  
 Signature Date



Index No. 7-21

# U.S. PUBLIC LAND SURVEY MONUMENT RECORD

State of Wisconsin

County of: **ONEIDA**

I, DANIEL K. PLEOGER, do hereby certify that on the 8th day of March, 2000

**I found evidence of the ¼ corner between sections 26 and 25**

Township **36 North**, Range **11 East**, Fourth Principal Meridian, as described hereon; and made new accessories as described hereon to perpetuate the original location of this corner:

**Description of original monument and accessories and subsequent restorations:**

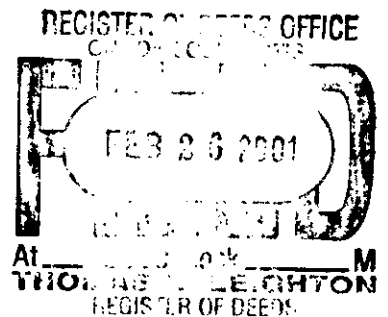
Wm Daugherty, July 29, 1859  
40.00 ch. Set post.  
Tamarack 10 N23W 18 lks. Spruce 6 S45E 33 lks.

BF Dorr, 1899  
Established ¼ corner by proportion.  
Tamarack 16 N40W 15 ½ lks. (gone, 2000)  
Tamarack 20 S57W 26 ½ lks. (rotted stump, 2000)

H.C. Lawrence, 11/12/54  
Found BF Dorr's 1899 corner. Found old post and BT stumps. Set new 6" cedar post.  
Cedar 14" N30E 39 lks. (ok, 2000)  
Cedar 8" S41 ½W 30 lks.

Phil Hansen, 6/30/75 Certified Land Corner Restoration.  
Found 5" cedar post, Dorr's BT stumps, Lawrence's BTs.  
Set 2 ½" iron pipe with brass cap.

William Bandow, 12/01/91  
Found capped pipe.  
Spike in 18" cedar old BT N32W 26.22 feet (This is Lawrence's BT, bearing should be N32E)  
Spike in 6" birch new BT N74W 13.87 feet (found at N34W, now dead)  
Spike in 8" cedar new BT S65W 25.94 feet (ok)  
Spike in 6" birch new BT S01E 11.40 feet (now a dead stub)

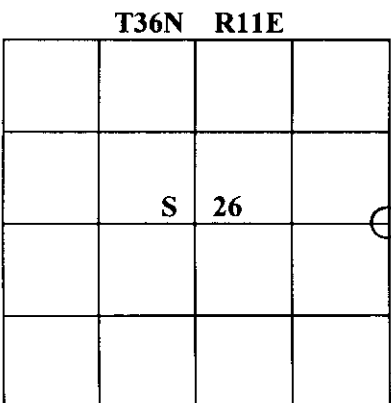


**EVIDENCE FOUND AND JUSTIFICATION FOR LOCATING CORNER AS SHOWN:**

I recovered a 2" iron pipe with brass cap, projecting 18" above ground.

Found bearing trees as noted above.

I referenced the corner as shown on the drawing on the reverse side.



Resident witnesses  
Dated at Winter, Wisconsin, this 8th day of January, 2001.

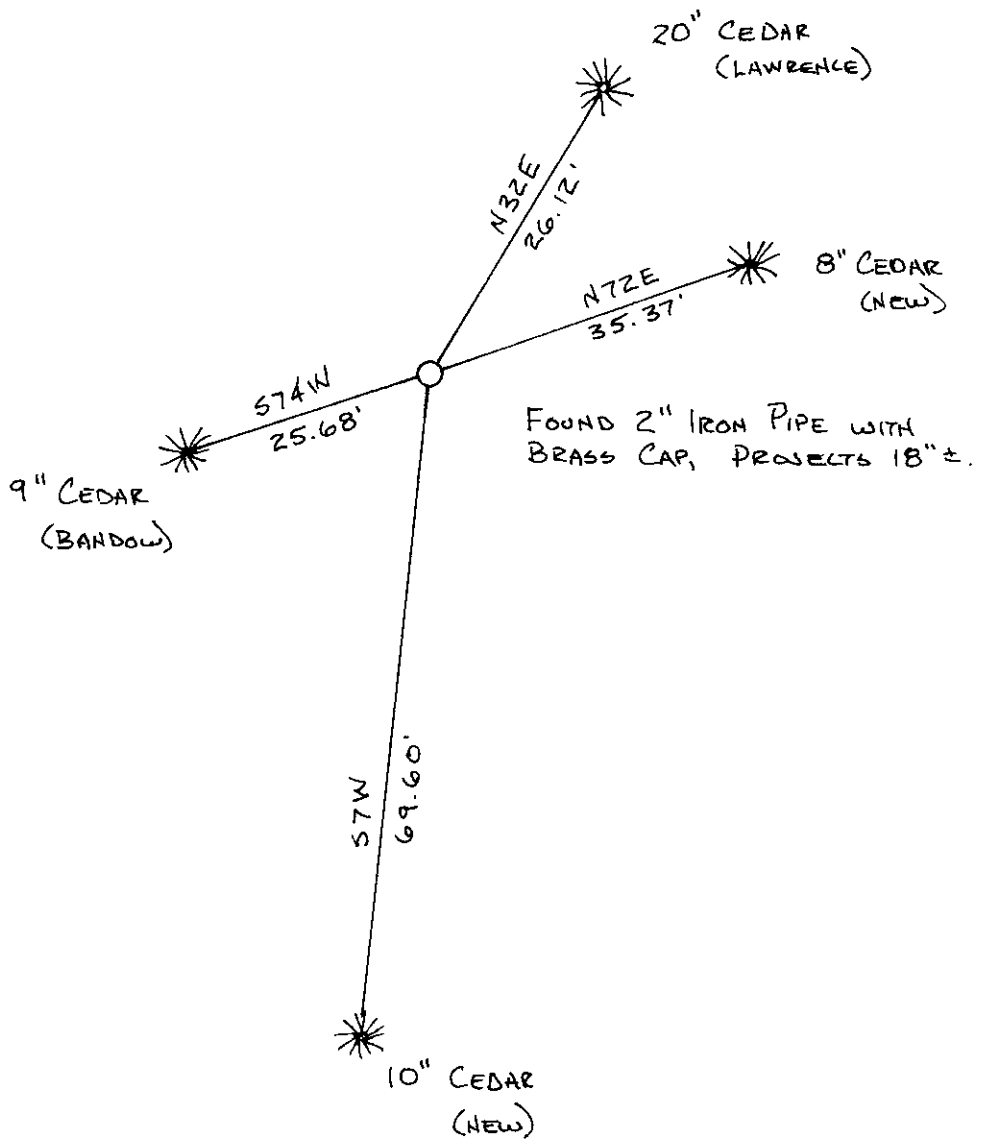
Signature Daniel K. Pleoger Title **Registered Land Surveyor**  
Surveyors Registration No. **1537**

Office of \_\_\_\_\_ County of \_\_\_\_\_

I hereby certify that the within instrument was filed in this office for record on the \_\_\_\_\_ day of \_\_\_\_\_ 19\_\_\_\_, and was filed in Book No. \_\_\_\_\_

Page No. \_\_\_\_\_ of County Records.

Signature \_\_\_\_\_ Title \_\_\_\_\_



# U.S. PUBLIC LAND SURVEY MONUMENT RECORD

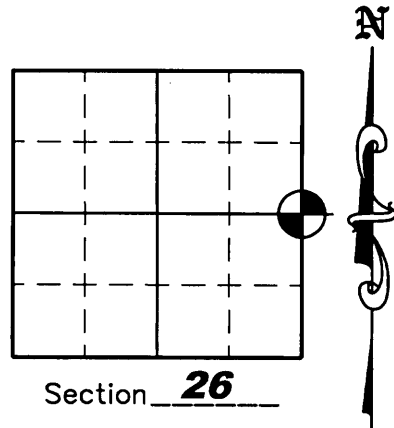
NOTE: This form is intended and designed to fulfill all requirements of Wisconsin Administrative Code, Chapter A-E 7 .08 U.S. Public Land Survey Monument Record (3)(a)(b)(c)(d)(e)(f)(g)(h)(i). An additional sheet may be added if necessary to conform with said requirements.

(a) Corner location: Township 36 North

Range 11 East

Town of MONICO

County of ONEIDA



Section 26

(b)(f)(g)(h) Description of monument found at this corner and if it was accepted, state all evidence (material, testimonial, occupation, plats, records, other monuments) used as a basis for accepting. If not accepted or if nothing was found, state evidence used as a basis for establishing location. If reestablished through lost corner proportionate methods, indicate all monuments, distances and directions used to establish. Indicate type of monument found or set and sign post.

March 8, 2000 – Daniel K. Pleoger found a 2" iron pipe with brass cap and referenced the monument. – See U.S.P.L.S. Monument Record dated 1/8/2001.

April 25, 2005 – Due to road construction Nicolet Surveyors, Inc. was hired by the Oneida County Land Information Office to preserve the location of this survey marker. Jonathan W. Dulin found a 2" iron pipe with brass cap and 4 bearing trees. The corner lies approximately 180' North of the center line of old Highway "8" roadbed and is not in danger of being disturbed due to road construction.

November 7, 2007 – The Oneida County Land Information Office hired us to go and revisit the corner because the installation of a new power line may have disturbed this corner. We found a 2" iron pipe with brass cap and 4 bearing trees. We set 2 witness corners as shown below.

(c)(d)(e) Plan view of corner with ties to at least 4 witness monuments. If in disagreement with previously established corner, show the distances between the two corners and also indicate the ties to the disputed corner.

## NOTES:

1. All bearing were taken with a hand compass and distances measured with a tape measure.

2. The Corner lies 180' North of the old Highway "8" roadbed.

## LEGEND

2" Iron Pipe with Brass Cap Found

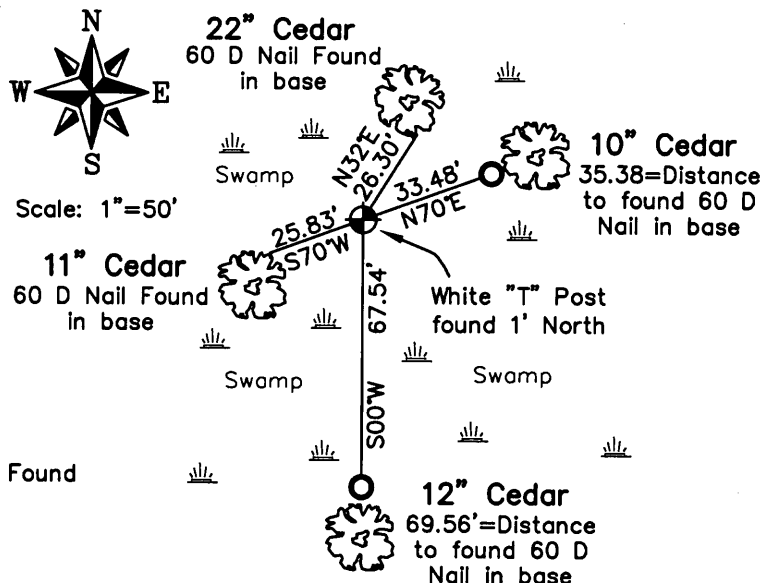
3/4" x 24" Iron Rebar Set Weighing 1.50 lbs/lin. ft.

(i) I, Jonathan W. Dulin, certify that the corner location on this record was determined by me under my direction and control and that this U.S. Public Land Survey Monument is correct and complete to the best of my knowledge and belief.

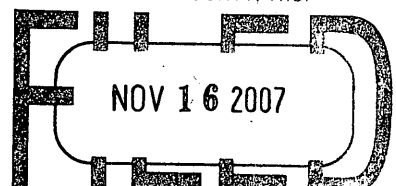
Signature



11/8/2007 Date



REGISTER OF DEEDS OFFICE  
ONEIDA COUNTY, WIS.



At \_\_\_\_\_ O'Clock \_\_\_\_\_ M  
THOMAS H. LEIGHTON  
REGISTER OF DEEDS

3611262000

Index No. T-21