

CERTIFIED LAND CORNER RESTORATION

Index No. V-17

State of Wisconsin

County of Oneida } ss.

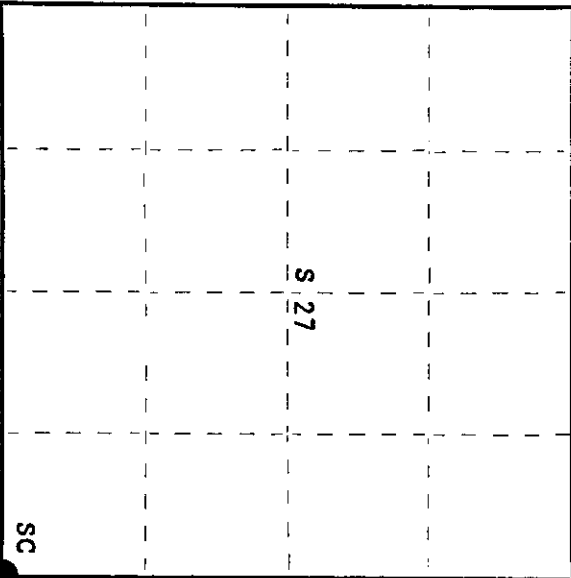
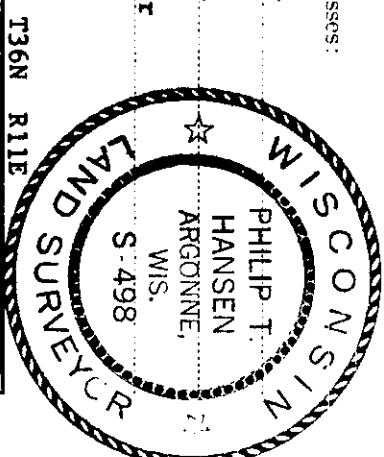
I Phillip T. Hansen, do hereby certify that on the 17th day of April, 1978, I found evidence of the Section corner of Sections 26, 27, 34, 35 Township 36 North, Range 11 East, Fourth Principal Meridian, as described hereon; and that from this evidence I established a new monument and accessories as described hereon to perpetuate the original location of this corner.

Resident witnesses:

Glen Barker

Jim Clafin

Herb Wagoner



○ = Corner monument restored.

History of original corner establishment:

Original corner established by Wm. E. Dougherty, Deputy Surveyor, in 1859 from which Birch 8" bears N65°W, 5 links and Birch 10" bears N60°E, 15 links.

B.F. Dorr, County Surveyor, ran the line between 26 & 35 in 1899. He had 39.04 chains for his distance from 1/4 corner west to section corner which set in corner of road, north between section 26 & 27.

H.C. Lawrence, Registered Land Surveyor, ran the line in 1946. His measured distance from 1/4 corner west to centerline of highway north was 38.94 chains.

Description of corner evidence found:

No evidence of any corner post or witnesses.

Accepted a point in line with an old fence line running south and the of town road running east & north as the position of corner.

Description of monument and accessories I established to perpetuate the original location of this corner.

Set a 1" iron pipe in fence line projecting 8" above ground.

Set a 2 1/2" Bernitsen A-1 Federal Monument for witness corner 25' south of iron pipe, projecting 8" above ground. Cap stamped:

- Marked NBT's - Hemlock 14" S60°E 48.05 ft. T36N R11E
- W. Birch 6" S36°E 9.9 ft. SC 27 26
- Maple 6" N18°W 36.55 ft., scribed SC BT. S498-1978
- N 25' to Cor.

Dated at Rhineland, Wis., this 1st day of May, 1978.

Signature Phillip T. Hansen Title Registered Land Surveyor Registration No. S-498
(County Surveyor, Registered Land Surveyor, or other duly authorized official)

Office of Register of Deeds, County of Oneida, I hereby certify that the within instrument was filed in this office for record on the 15th day of May, 1978 at 2:20 o'clock P. M.

Dorcas Veneta Kuelm
(Register of Deeds)

By Speck & M. Boomer Deputy

00080800

U.S. PUBLIC LAND SURVEY MONUMENT RECORD

State of Wisconsin

County of: **ONEIDA** }

I, **DANIEL K. PLEOGER**, do hereby certify that on the 9th day of November, 1999

I found evidence of the corner of sections 26, 27, 34, 35

Township **36 North**, Range **11 East**, Fourth Principal Meridian, as described hereon;

and made new accessories as described hereon to perpetuate the original location of this corner:

Description of original monument and accessories and subsequent restorations:

The corner of sections 26, 27, 34, 35 was restored by Phil Hansen on April 17, 1978. See his certified Land Corner Restoration.

Hansen set a 1" iron pipe, projecting 8" above ground. Set aluminum monument for a witness at 25 feet south.

Hemlock 14" S60E 48.05 feet

W. Birch 6" S36E 9.9 feet

Maple 6" N18W 36.55 feet

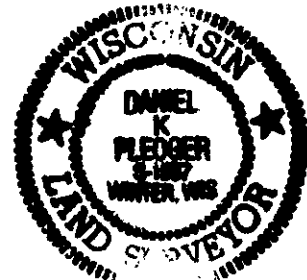
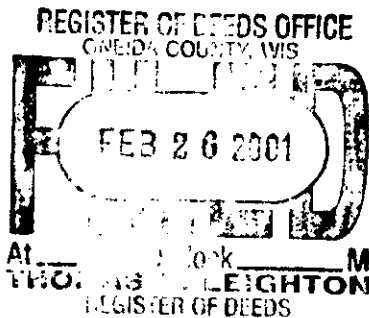
EVIDENCE FOUND AND JUSTIFICATION FOR LOCATING CORNER AS SHOWN:

I recovered a 1" iron pipe, 12" below the surface. Found Hansen's 2 1/2" aluminum witness monument at 25.00 feet south.

Found Hansen's hemlock and maple bearing trees, the birch is gone.

I accepted the position of the found iron pipe.

I referenced the corner as shown on the drawing on the reverse side.



T36N R11E

		S 26	

Resident witnesses

Dated at Winter, Wisconsin, this 8th day of January, 2001.

Signature *Daniel K. Pleoger* Title **Registered Land Surveyor**

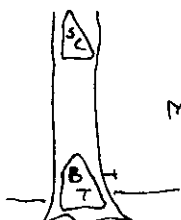
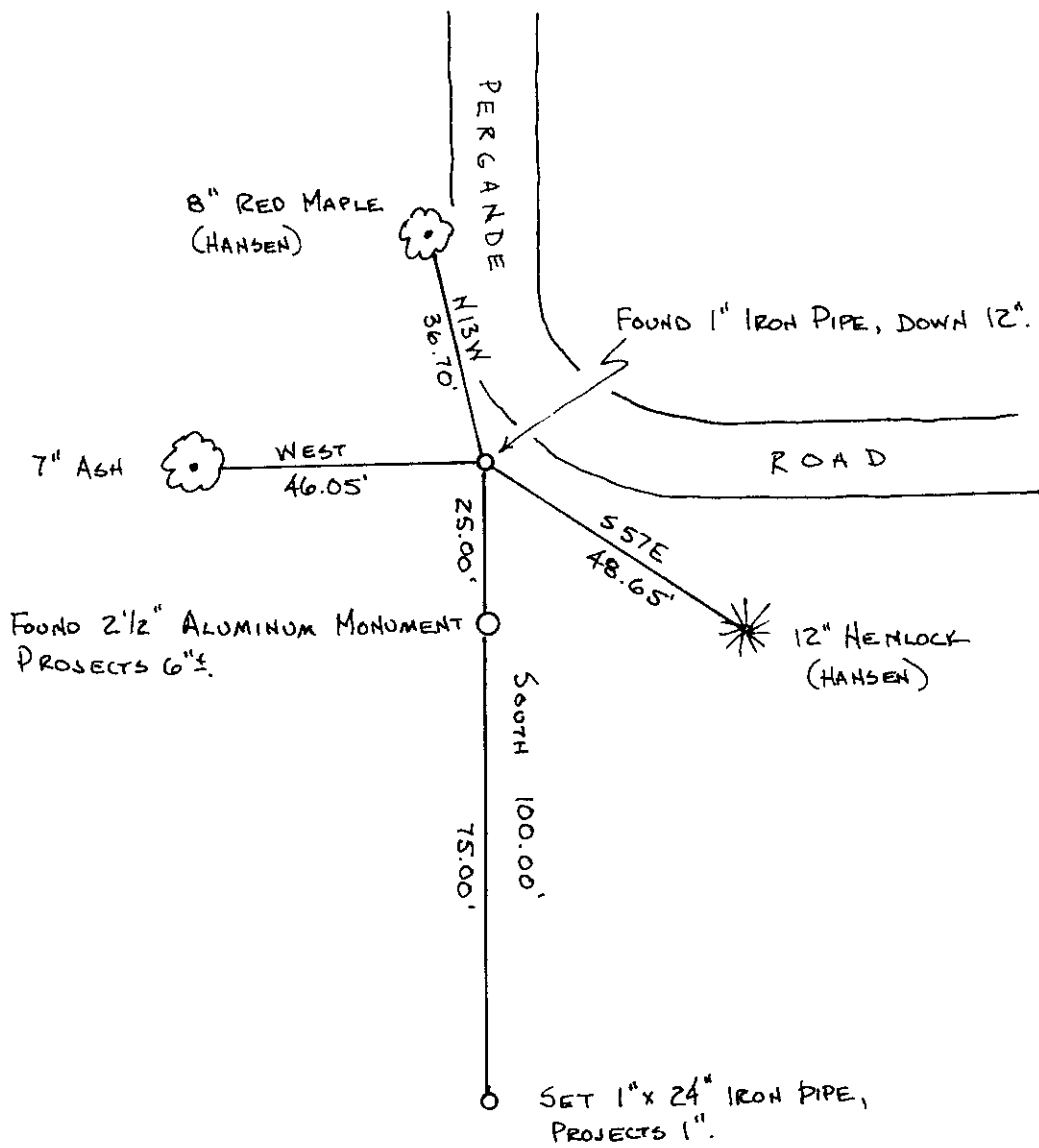
Surveyors Registration No. **1537**

Office of _____ County of _____

I hereby certify that the within instrument was filed in this office for record on the _____ day of _____ 19 _____, and was filed in Book No. _____

Page No. _____ of County Records.

Signature _____ Title _____



MEASURED TO 60d NAIL
IN BTs.