

U.S. PUBLIC LAND SURVEY MONUMENT RECORD

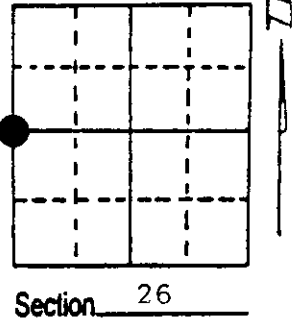
Note: This form is intended and designed to fulfill all requirements of Wisconsin Administrative Code, Chapter A-E 7.08 U.S. Public Land Survey Monument Record (3) (a) (b) (c) (d) (e) (f) (g) (h) (i). An additional sheet may be added if necessary to conform with said requirements.

(a) Corner location: Township 36 North

Range 11 East

Town/City/Village Piehl

County Oneida



Section 26

(b) (f) (g) (h) Description of monument found at this corner and if it was accepted, state all evidence (material, testimonial, occupational, plats, records, other monuments) used as a basis for accepting. If not accepted or if nothing was found, state evidence used as basis for establishing location. If reestablished through lost corner proportionate methods, indicate all monuments, distances and directions used to establish. Indicate type of monument found or set and sign post.

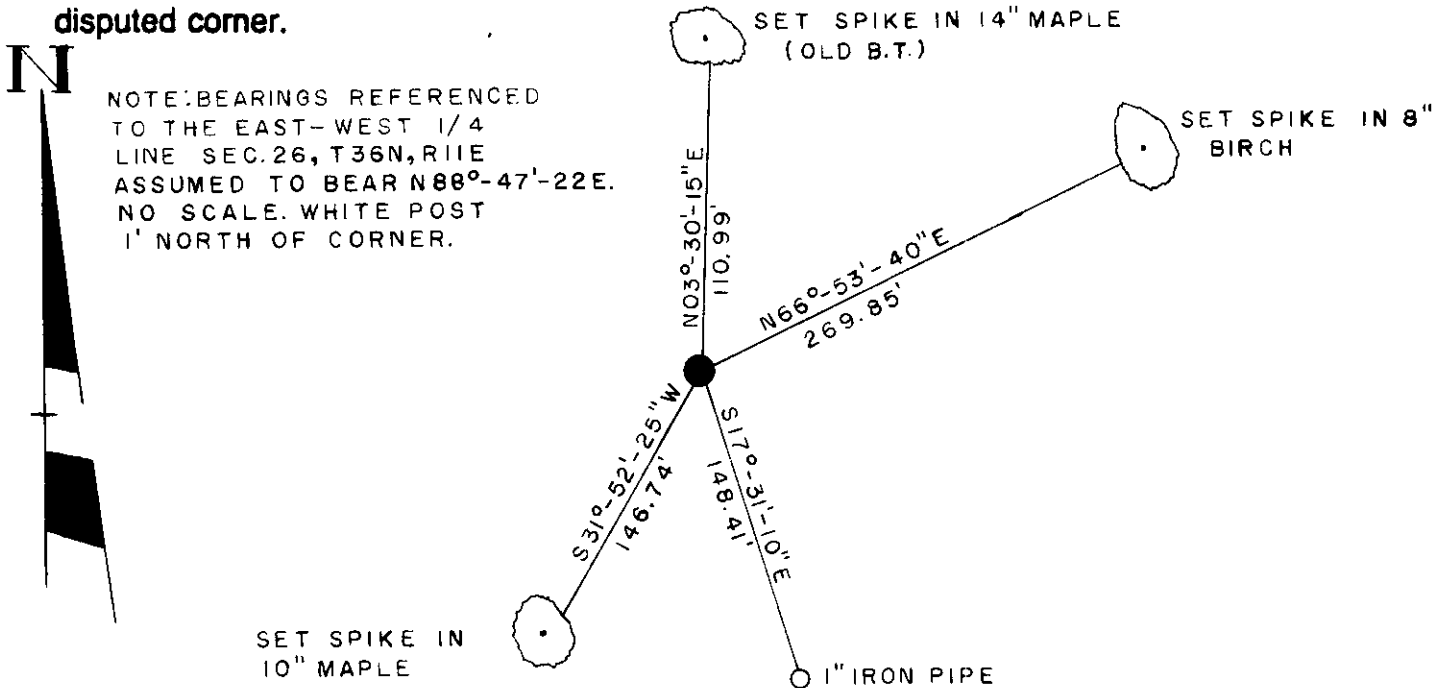
1859-Daugherty set post 6" Maple North 40 degrees West 23 links

6" Birch South 77 degrees East 6 links

1978-William E. Bandow set 2" capped monument (see back side)

1992-William E. Bandow recovered Oneida County Monument and witnessed as shown below:

(c) (d) (e) Plan view of corner with ties to at least 4 witness monuments. If in disagreement with previously established corner, show the distances between the two corners and also indicate the ties to the disputed corner.

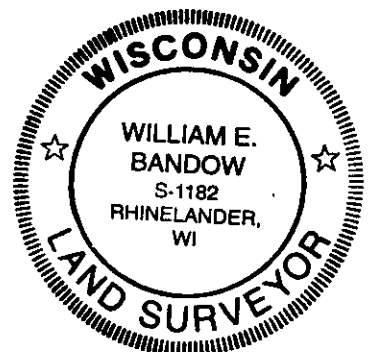


NOTE: BEARINGS REFERENCED TO THE EAST-WEST 1/4 LINE SEC. 26, T36N, R11E ASSUMED TO BEAR N88°-47'-22"E. NO SCALE. WHITE POST 1' NORTH OF CORNER.

(i) I, _____ (type or print name) certify that the corner location on this record was determined by me or under my direction and control and that this U.S. Public Land Survey Monument Record is correct and complete to the best of my knowledge and belief.

Signature

Date



Index No. T-17

Stamp
3611272000

NW. COR.

2607.75'

SET W 1/4 AT INTERSECTION OF WEST SECTION LINE
& E-W 1/4 LINE

2648.38'

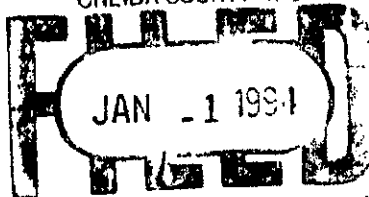
C 1/4

E 1/4

2639.65'

SW. COR.

REGISTER OF DEEDS OFFICE
ONEIDA COUNTY WIS



At _____ O'Clock
THOMAS H. LEIGHT
REGISTER OF DEEDS

U.S. PUBLIC LAND SURVEY MONUMENT RECORD

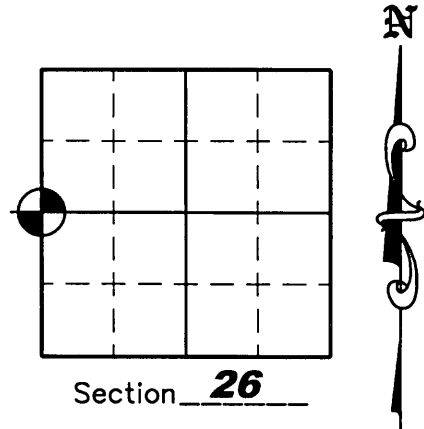
NOTE: This form is intended and designed to fulfill all requirements of Wisconsin Administrative Code, Chapter A-E 7 .08 U.S. Public Land Survey Monument Record (3)(a)(b)(c)(d)(e)(f)(g)(h)(i). An additional sheet may be added if necessary to conform with said requirements.

(a) Corner location: Township 36 North

Range 11 East

Town of MONICO

County of ONEIDA



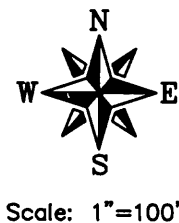
(b)(f)(g)(h) Description of monument found at this corner and if it was accepted, state all evidence (material, testimonial, occupation, plats, records, other monuments) used as a basis for accepting. If not accepted or if nothing was found, state evidence used as a basis for establishing location. If reestablished through lost corner proportionate methods, indicate all monuments, distances and directions used to establish. Indicate type of monument found or set and sign post.

1992 – William E. Bandow found Oneida County monument and set 3 bearing trees and a 1" iron pipe for witness corners. – See U.S.P.L.S. Monument Record dated 12/29/1993.

April 25, 2005 – Due to road construction Nicolet Surveyors, Inc. was hired by the Oneida County Land Information Office to preserve the location of this survey marker. Jonathan W. Dulin found a 2" capped aluminum Oneida County monument, the 1" iron pipe and two of William Bandow's bearing trees. We set 2 new witness corners.

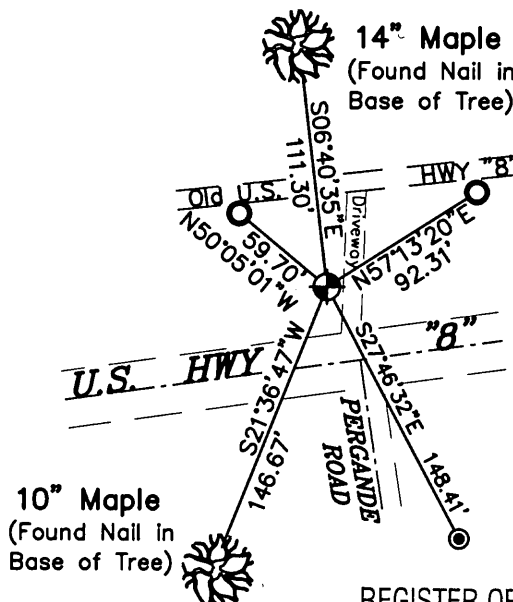
November 7, 2007 – The Oneida County Land Information Office hired us to go and revisit the corner because the installation of a new power line may have disturbed this corner. We found a 2" capped Oneida County aluminum monument and witness corners as shown below.

(c)(d)(e) Plan view of corner with ties to at least 4 witness monuments. If in disagreement with previously established corner, show the distances between the two corners and also indicate the ties to the disputed corner.



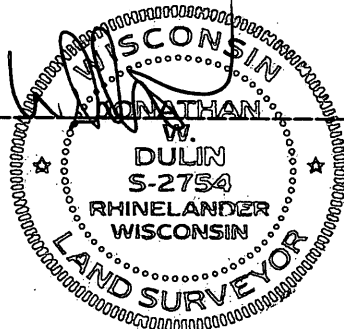
LEGEND

- 2" Capped Oneida County Aluminum Monument Found
- 3/4" x 24" Iron Rebar Set Weighing 1.50 lbs/lin. ft.
- 1" Iron Pipe Found

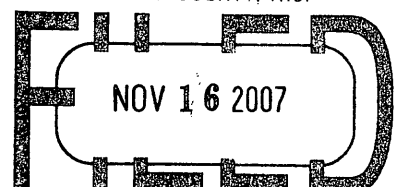


(i) I, Jonathan W. Dulin, certify that the corner location on this record was determined by me under my direction and control and that this U.S. Public Land Survey Monument is correct and complete to the best of my knowledge and belief.

Signature *Jonathan W. Dulin* Date 11/8/2007



REGISTER OF DEEDS OFFICE
ONEIDA COUNTY, WIS.



At _____ O'Clock _____ M.
THOMAS H. LEIGHTON
REGISTER OF DEEDS
3611272000

Index No. T-17