

CERTIFIED LAND CORNER RESTORATION
U.S. PUBLIC LAND SURVEY MONUMENT RECORD

State of Wisconsin } ss.
County of Oneida

History of original corner establishment:
Original corner was established in the course of the subdivision of T 36 N, R 11 E, in 1859 by William E. Daugherty, Deputy Surveyor.

I, James L. Will, do hereby certify that on the 13th day of April, 19 84, I found evidence of the West 1/4 corner of Section 27 Township 36 North, Range 11 East, Fourth Principal Meridian,

Original B.T.'s:
6" Fir S 47° W 30 lks.
8" Fir N 46° E 55 lks.

as described hereon; and that from this evidence I established a new monument and accessories as described hereon to perpetuate the original location of this corner.

Description of corner evidence found:
No evidence found.

Resident witnesses:

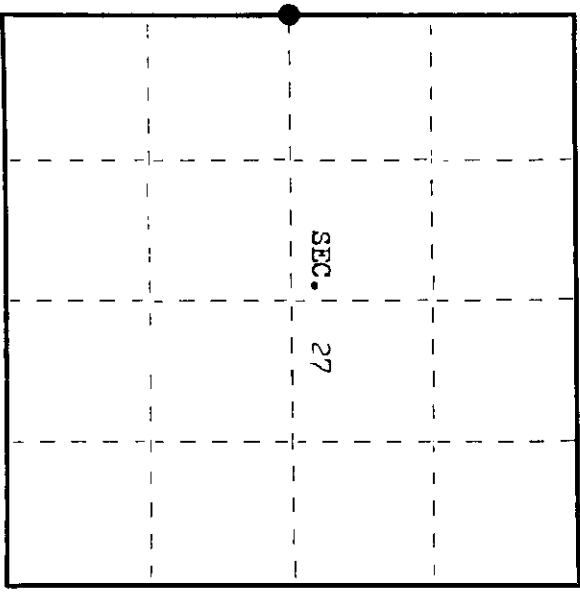
Eric Zyhowski

Kip W. Soder

Description of monument and accessories I established to perpetuate the original location of this corner.

Set 2" x 30" magnetic aluminum capped Oneida County monument by simple proportion between section corners to the North and South. Corner fell in the centerline of "Old Hwy. 8". Set monument 1" below blacktop.

Blazed and scribed the following new bearing trees:
14" W. Birch N 56° W 138.30 ft. (Distances are to nails in
8" W. Birch N 6° W 110.10 ft. the side of the bearing trees)
12" Ash N 32° E 99.00 ft.
13" Power pole #3611-27WI N 25° W 40.68 ft.



● = Corner monument restored.

Dated at Rhineland, Wis., this 27th day of May, 19 84.

Signature James L. Will Title Registered Land Surveyor Registration No. S-1410
(County Surveyor, Registered Land Surveyor, or other duly authorized official)

Office of Register of Deeds, County of Oneida hereby certify that the within instrument was filed in this office for record on the 11 day of May, 19 84 at 4:00 o'clock P. M.

Doris Voss (Register of Deeds)

By James A. Goss Deputy

(e) Describe any material discrepancy between the location of the corner as restored or reestablished and the location of that corner as previously restored or reestablished by distance and direction. Show the discrepancy on the plan view drawing under (d), above. Show the distances between the corner as previously restored or reestablished and (1) the corner as restored or reestablished, and (2) to at least 2 of the witness monuments shown on the drawing in (d), above.

None.

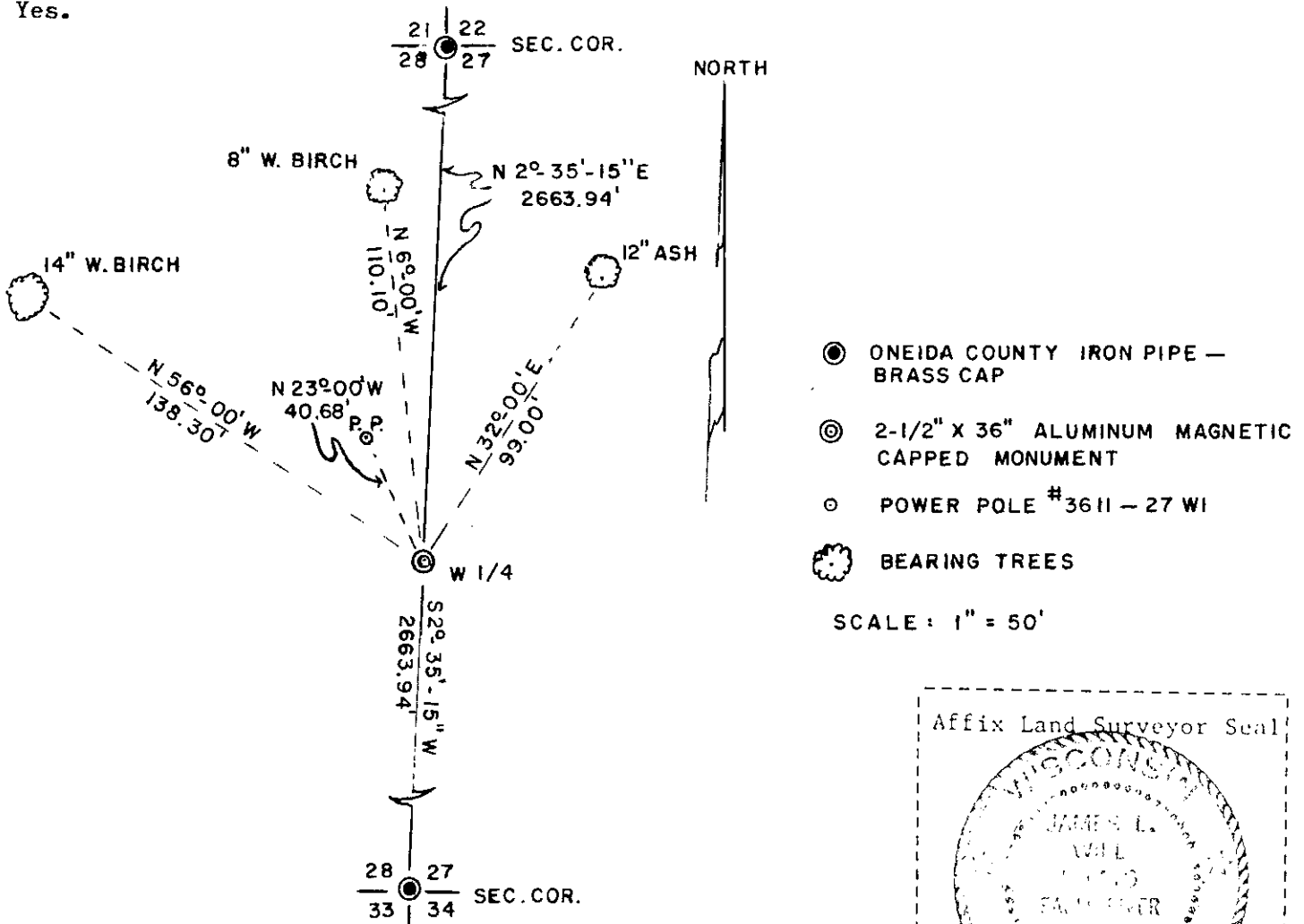
See sketch below.

(f) Was the corner restored through acceptance of (1) an obliterated evidence location, or, (2) a found perpetuated location?

Corner was retored by single proportion between the section corners to the north and south.

(g&h) Was the corner reestablished through lost corner proportionate methods? If so, show the method, including the directions and distances to other public land survey corners used as evidence or used for proportioning in determining the corner location?

Yes.



(1) James L. Will R.L.S. #1410
 (type or print name) certify that the corner location shown on this record was determined by me or under my direction and control and that this U.S. Public Land Survey Monument Record is correct and complete to the best of my knowledge and belief.

James L. Will Signature MAY 7, 1984 Date

U.S. PUBLIC LAND SURVEY MONUMENT RECORD

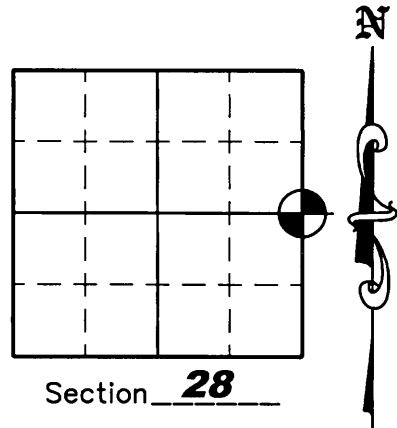
NOTE: This form is intended and designed to fulfill all requirements of Wisconsin Administrative Code, Chapter A-E 7 .08 U.S. Public Land Survey Monument Record (3)(a)(b)(c)(d)(e)(f)(g)(h)(i). An additional sheet may be added if necessary to conform with said requirements.

(a) Corner location: Township 36 North

Range 11 East

Town of MONICO

County of ONEIDA



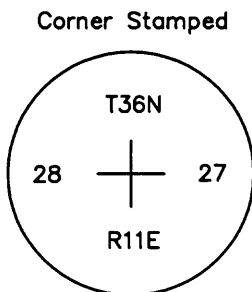
(b)(f)(g)(h) Description of monument found at this corner and if it was accepted, state all evidence (material, testimonial, occupation, plats, records, other monuments) used as a basis for accepting. If not accepted or if nothing was found, state evidence used as a basis for establishing location. If reestablished through lost corner proportionate methods, indicate all monuments, distances and directions used to establish. Indicate type of monument found or set and sign post.

May 7, 1984 – James Will set a 2" aluminum capped Oneida County monument by single proportion and set 4 new bearing trees – See U.S.P.L.S. Monument Record.



April 25, 2005 – Due to road construction Nicolet Surveyors, Inc. was hired by the Oneida County Land Information Office to preserve the location of this survey marker. Jonathan W. Dulin found a 2" capped aluminum Oneida County monument with the cap missing and top half bent over. We also found 2 of James Will's bearing trees. We carefully pulled the disturbed monument out and replaced it with a 2" capped Oneida County aluminum monument 3" below the roadbed. We set 3 new witness corners as shown below.

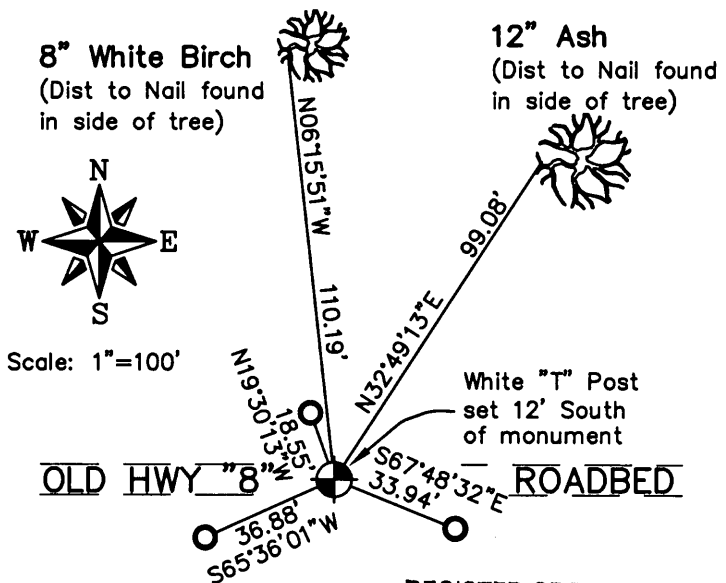
November 7, 2007 – The Oneida County Land Information Office hired us to go and revisit the corner because the installation of a new power line may have disturbed this corner. We found a 2" capped Oneida County aluminum monument and witness corners as shown below.

(c)(d)(e) Plan view of corner with ties to at least 4 witness monuments. If in disagreement with previously established corner, show the distances between the two corners and also indicate the ties to the disputed corner.



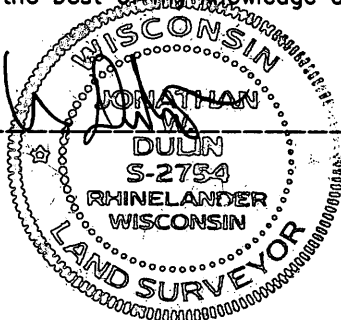
LEGEND

-  2" Capped Oneida County Aluminum Monument Set
-  3/4" x 24" Iron Rebar Set Weighing 1.50 lbs/lin. ft.



(i) I, Jonathan W. Dulin, certify that the corner location on this record was determined by me under my direction and control and that this U.S. Public Land Survey Monument is correct and complete to the best of my knowledge and belief.

Signature Jonathan W. Dulin Date 11/9/2007



REGISTER OF DEEDS OFFICE
ONEIDA COUNTY, WIS.

NOV 16 2007

At _____ O'Clock _____ M
THOMAS H. LEIGHTON
REGISTER OF DEEDS
3611282000