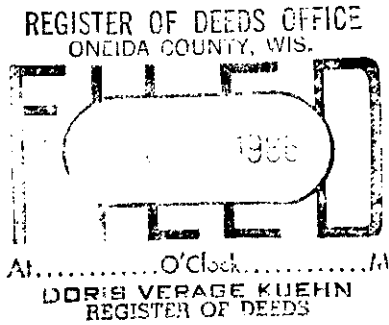
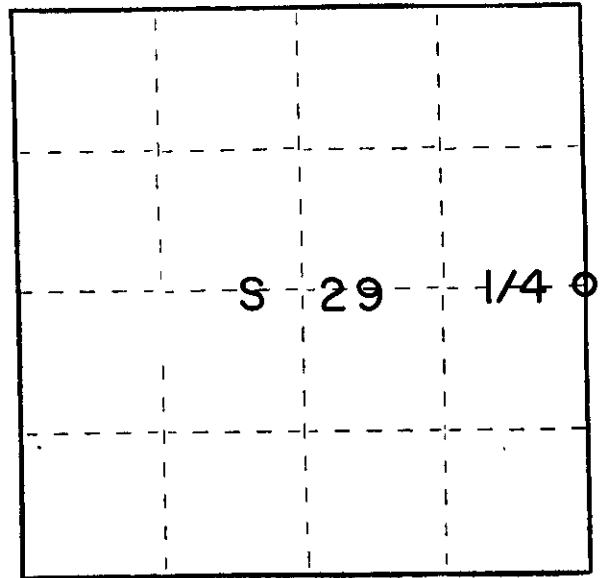


# U. S. PUBLIC LAND SURVEY MONUMENT RECORD

**INSTRUCTIONS:** This record shall show the location of the corner and shall include all of the following nine elements (a through i).

- (a) Identify the corner by reference to the U.S. public land survey system.  
 ○ = Corner monument restored.

T36N  
R11E

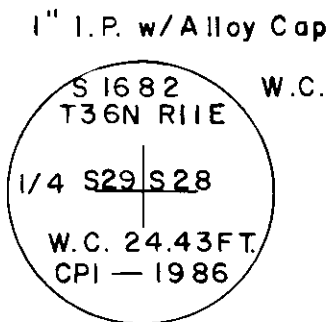
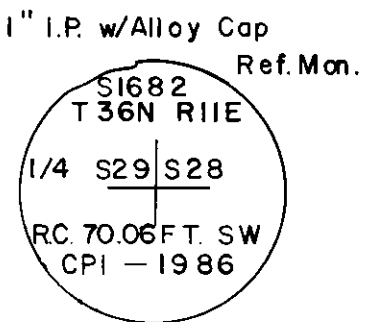
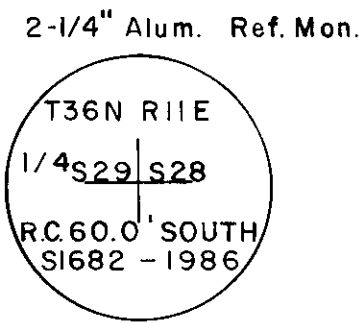
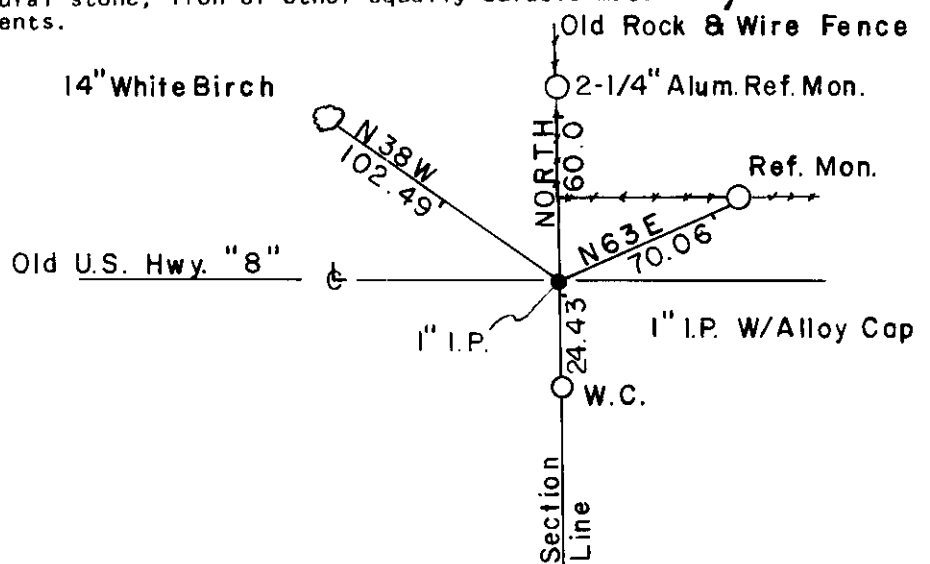


- (b) Describe any record evidence, monument evidence, occupational evidence, testimonial evidence or any other material evidence you considered, and whether the monument was found or placed.

Re-established 1/4 corner on basis of old property lines and old U.S. Hwy 8 survey. An old rock fence with a wire fence later established alongside runs north with evidence of old field on the east side. Projected old fence alignment from the north R.O.W. edge of old Hwy 8 to center line of old Hwy. for 1/4 corner position. Survey notes and maps of 1917 survey have this being the position, calling the field an orchard, also a recorded distance from same 1/4 corner east to C 1/4 corner position of Sec. 28 of 2736.00'. C 1/4 position at the intersection of old Hwy. 8 and town road running south. Re-survey distance of 2737.00' determining the center line of town road.

- (c) In the plan view drawing below, provide reference ties to at least 4 witness monuments, or, if the location is within a municipality, to at least 2 witness monuments. (Witness monuments shall be made of concrete, natural stone, iron or other equally durable material.) Describe witness monuments.

- (d) Show a plan view drawing depicting the relevant monuments and reference ties which is sufficient in detail to enable accurate relocation of the corner monument if the corner monument is disturbed. Indicate north.



T-1  
b-1

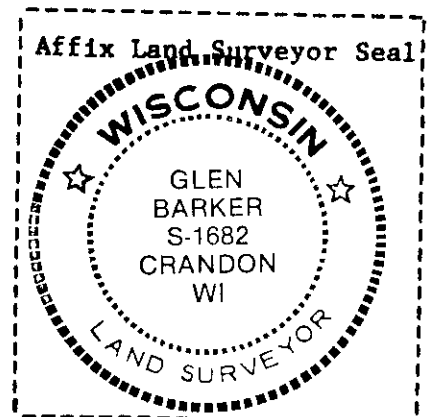
(e) Describe any material discrepancy between the location of the corner as restored or reestablished and the location of that corner as previously restored or reestablished by distance and direction. Show the discrepancy on the plan view drawing under (d), above. Show the distances between the corner as previously restored or reestablished and (1) the corner as restored or reestablished, and (2) to at least 2 of the witness monuments shown on the drawing in (d), above.

(f) Was the corner restored through acceptance of (1) an obliterated evidence location, or, (2) a found perpetuated location?

Obliterated evidence.

(g&h) Was the corner reestablished through lost corner proportionate methods? If so, show the method, including the directions and distances to other public land survey corners used as evidence or used for proportioning in determining the corner location?

(i) I, Glen Barker  
(type or print name) certify that the corner location shown on this record was determined by me or under my direction and control and that this U.S. Public Land Survey Monument Record is correct and complete to the best of my knowledge and belief.



Glen Barker                      10/27/86  
Signature                                      Date

# U.S. PUBLIC LAND SURVEY MONUMENT RECORD

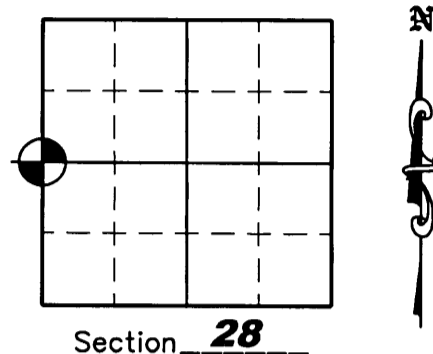
NOTE: This form is intended and designed to fulfill all requirements of Wisconsin Administrative Code, Chapter A-7 .08 U.S. Public Land Survey Monument Record (3)(a)(b)(c)(d)(e)(f)(g)(h)(i). An additional sheet may be added if necessary to conform with said requirements.

(a) Corner location: Township 36 North

Range 11 East

Town of MONICO

County of ONEIDA



Section 28

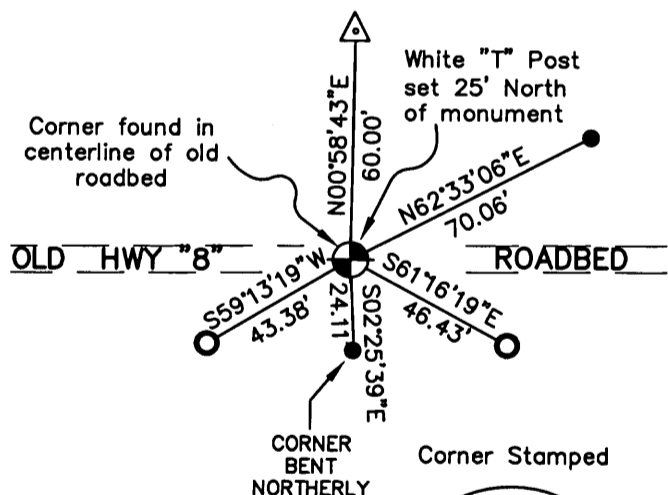
(b)(f)(g)(h) Description of monument found at this corner and if it was accepted, state all evidence (material, testimonial, occupation, plats, records, other monuments) used as a basis for accepting. If not accepted or if nothing was found, state evidence used as a basis for establishing location. If reestablished through lost corner proportionate methods, indicate all monuments, distances and directions used to establish. Indicate type of monument found or set and sign post.

October 27, 1986 – Glen Barker reestablished corner by extending a rock wall south and intersecting it with the centerline of the old Highway "8" roadbed. He set a 1" iron pipe along with 3 reference monuments and a bearing tree – See U.S.P.L.S. Monument Record.

April 25, 2005 – Due to road construction Nicolet Surveyors, Inc. was hired by the Oneida County Land Information Office to preserve the location of this survey marker. Jonathan W. Dulin found a 2-1/4" reference corner and two 1" iron pipes with alloy caps as reference corners, but no monument was found. We reset this corner with a 2" capped Oneida County aluminum monument using the 3 existing reference corners and set 2 new witness corners.

November 7, 2007 – The Oneida County Land Information Office hired us to go and revisit the corner because the installation of a new power line may have disturbed this corner. We found a 2" capped Oneida County aluminum monument and witness corners as shown below.

(c)(d)(e) Plan view of corner with ties to at least 4 witness monuments. If in disagreement with previously established corner, show the distances between the two corners and also indicate the ties to the disputed corner.



## LEGEND

- 2" Capped Oneida County Aluminum Monument Set
- 3/4" x 24" Iron Rebar Set Weighing 1.50 lbs/lin. ft.
- 1" Iron pipe with alloy cap found
- 2-1/4" Aluminum Witness Mon. Found

(i) I, Jonathan W. Dulin, certify that the corner location on this record was determined by me under my direction and control and that this U.S. Public Land Survey Monument is correct and complete to the best of my knowledge and belief.

Signature Jonathan W. Dulin Date 11/8/2007

T36N  
29 — 28  
R11E

REGISTER OF DEEDS OFFICE  
ONEIDA COUNTY, WIS.

**FILED**  
NOV 16 2007

At \_\_\_\_\_ O'Clock \_\_\_\_\_ M  
**THOMAS H. LEIGHTON**  
REGISTER OF DEEDS  
3611292000

Index No. T-9