

CERTIFIED LAND CORNER RESTORATION

Index No. A-2

State of Wisconsin

County of Oneida } ss.

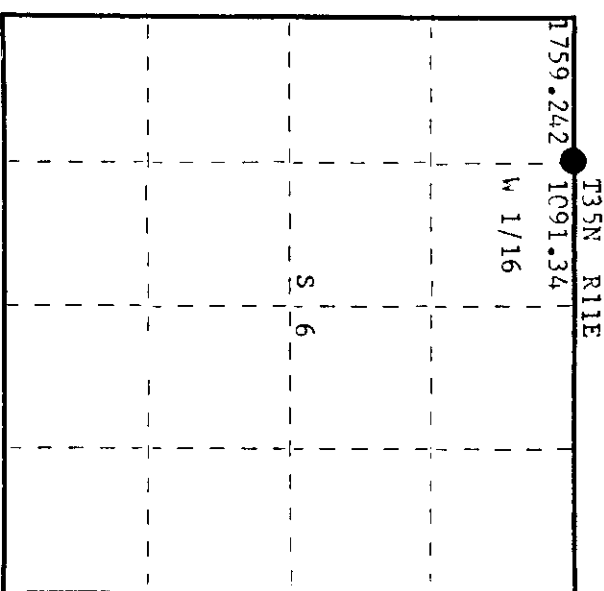
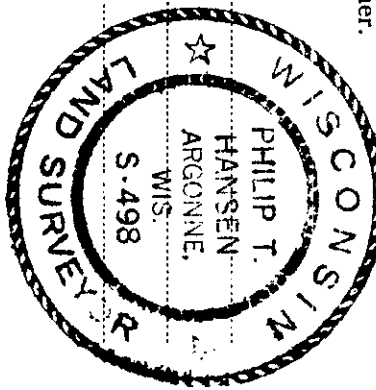
I, Philip T. Hansen, do hereby certify that on the 4th day of April, 1979, ~~established~~ ~~restored~~ ~~on~~ the W 1/16 corner of Section 31 and 6 Township 36 E 35, North, Range 11 North, Fourth Principal Meridian, as described hereon; and that from this evidence I established a new monument and accessories as described hereon to perpetuate the original location of this corner.

Resident witnesses:

Glen Barker

Jim Claflin

Herb Wagoner



O = Corner monument restored.

History of original corner establishment:
No records available of any previous survey.

Description of corner evidence found:

No evidence of any corner recovered.
Corner established by traverse and computation. Computed by proportional measurement based on original measurements. Ran traverse from 1/4 corner between 31 and 6 to section corner 1, 6, 31 and 36. Computed distance is 2850.582 feet. Computed distance at N 85° 08' 42" W of 1/4 corner is 1091.34 feet and S 85° 08' 42" E, 1759.242' from section corner.

Description of monument and accessories I established to perpetuate the original location of this corner.
Set 1 1/2" iron pipe with 2" brass cap projecting 24". Cap stamped:
Corner sets approximately 75' north of centerline of old highway 76, south road.
Marked NBT's -

- Naple 6" S75°W 13.15 feet S498
- Naple 5" S21°E 19.70 feet T36N R11E
- both scribed 1/16 FT. W 1/16 S+31
- T35N R11E
- CPI-1979

Dated at Rhinelander, Wis., this 24th day of April, 1979

Signature Philip T. Hansen Title Registered Land Surveyor Registration No. S-498
County Surveyor, Registered Land Surveyor, or other duly authorized official

Office of Register of Deeds, County of Oneida
Instrument was filed in this office for record on the 14th day of May, 1979
at 1:30 o'clock P.M.

Doris George Fuchs
(Register of Deeds)

By Doris George Fuchs Deputy

36/1310030