

CERTIFIED LAND CORNER RESTORATION

Index No. Y-21

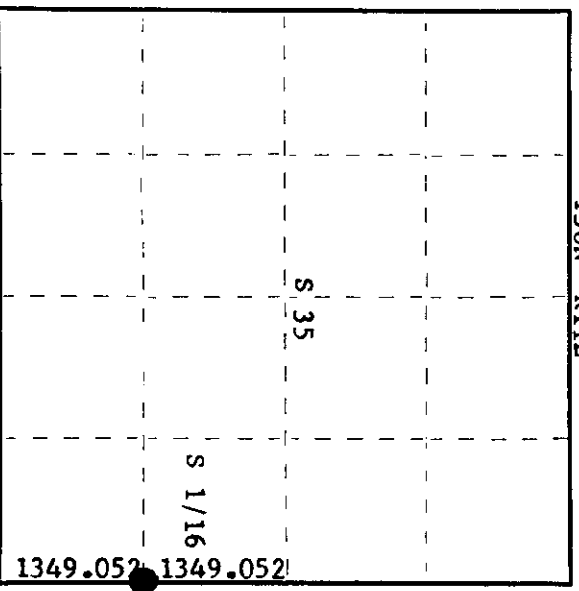
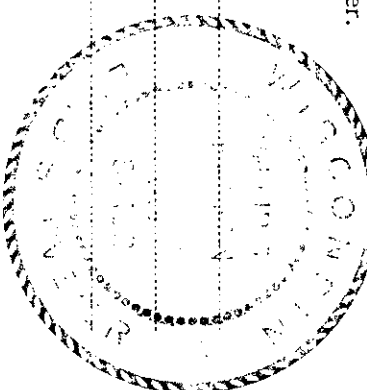
State of Wisconsin }
County of Oneida } ss.

I Phillip T. Hansen, do hereby certify that on the 20th day of April, 19 78, I ~~restored~~ established the S 1/16 corner of Sections 35 & 36 Township 36 North, Range 11 East, Fourth Principal Meridian,

as described hereon; and that from this evidence I established a new monument and accessories as described hereon to perpetuate the original location of this corner.

Resident witnesses:

- Glen Barker
- Jim Clafflin
- Herb Wagoner



O = Corner monument restored.

History of original corner establishment:

No records of any previous survey.

Description of corner evidence found:

No evidence of any corner received.
 Corner established by traverse and computation by proportional measurement.
 Ran traverse from 1/4 corner between sections 35 & 36 to section corner 1, 2, 35-11 and 35 & 36 - 36-11. Computed distance 2698.103 ft. at bearing N 2° 18' 07" E.
 Established S 1/16 at 1349.052 ft. Intermediate.

Description of monument and accessories I established to perpetuate the original location of this corner.

Set 1 1/2" iron pipe with 2" brass cap projecting 16" above ground. Cap stamped:

Marked NBT's - Black Spruce 6" N 56° E, 15.45 ft. S498
 Black Spruce 7" S61° W, 16.35 ft. T36N R11E
 scribed 1/16 BT S 1/16 35 + 36
 CPI-1978

Dated at Rhineland, Wis., this 1st day of May, 19 78.

Signature Phillip T. Hansen Title Registered Land Surveyor Registration No. S-498
(County Surveyor, Registered Land Surveyor, or other duly authorized official)

Office of Registrar of Deeds, County of Oneida, I hereby certify that the within instrument was filed in this office for record on the 15th day of May, 19 78 at 2:00 o'clock P. M.

Denise Glasgow Tucker
(Registered Deeds)

By Joseph M. Bremer Deputy

3611351000